

CENTER *for* PUBLIC POLICY PRIORITIES

Testimony to the Texas Commission on Public School Finance

CHANDRA VILLANUEVA

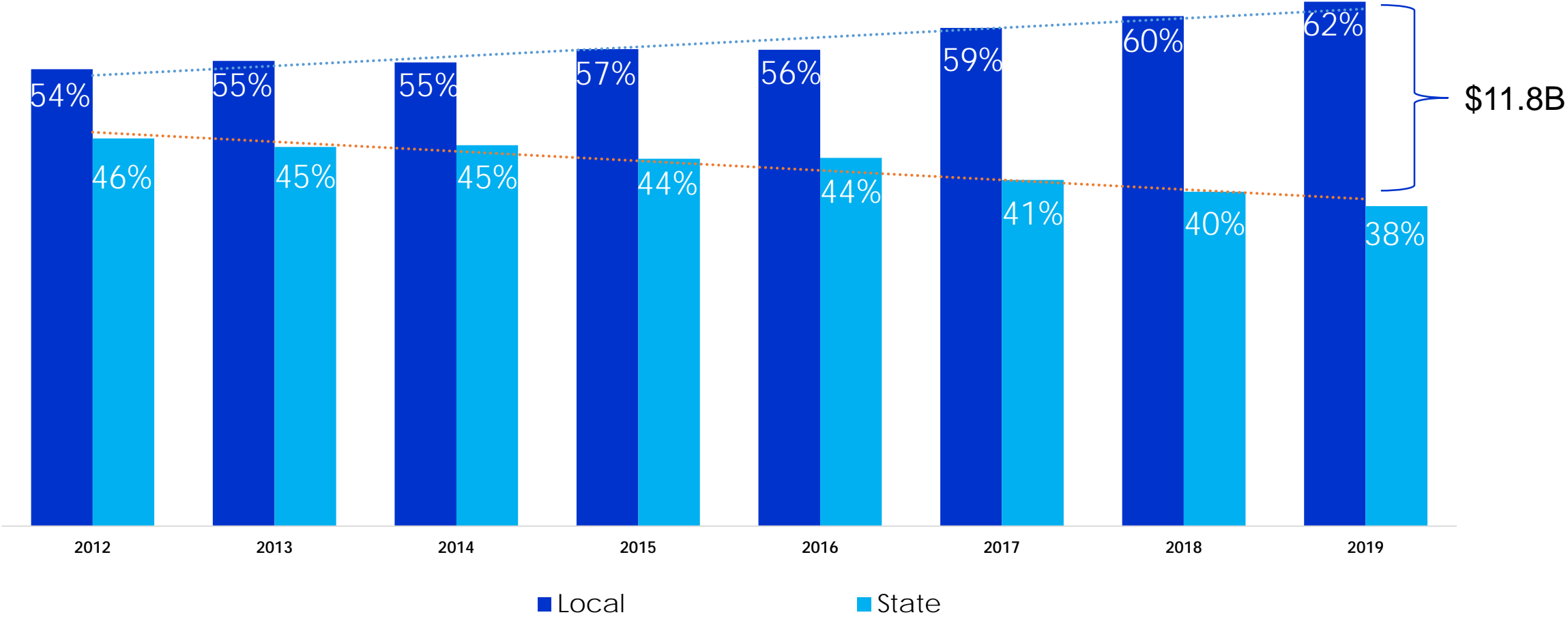
SENIOR POLICY ANALYST, CPPP

VILLANUEVA@CPPP.ORG

[@CHANDRAKUS](#)

Sources of Funding: State and Local Share

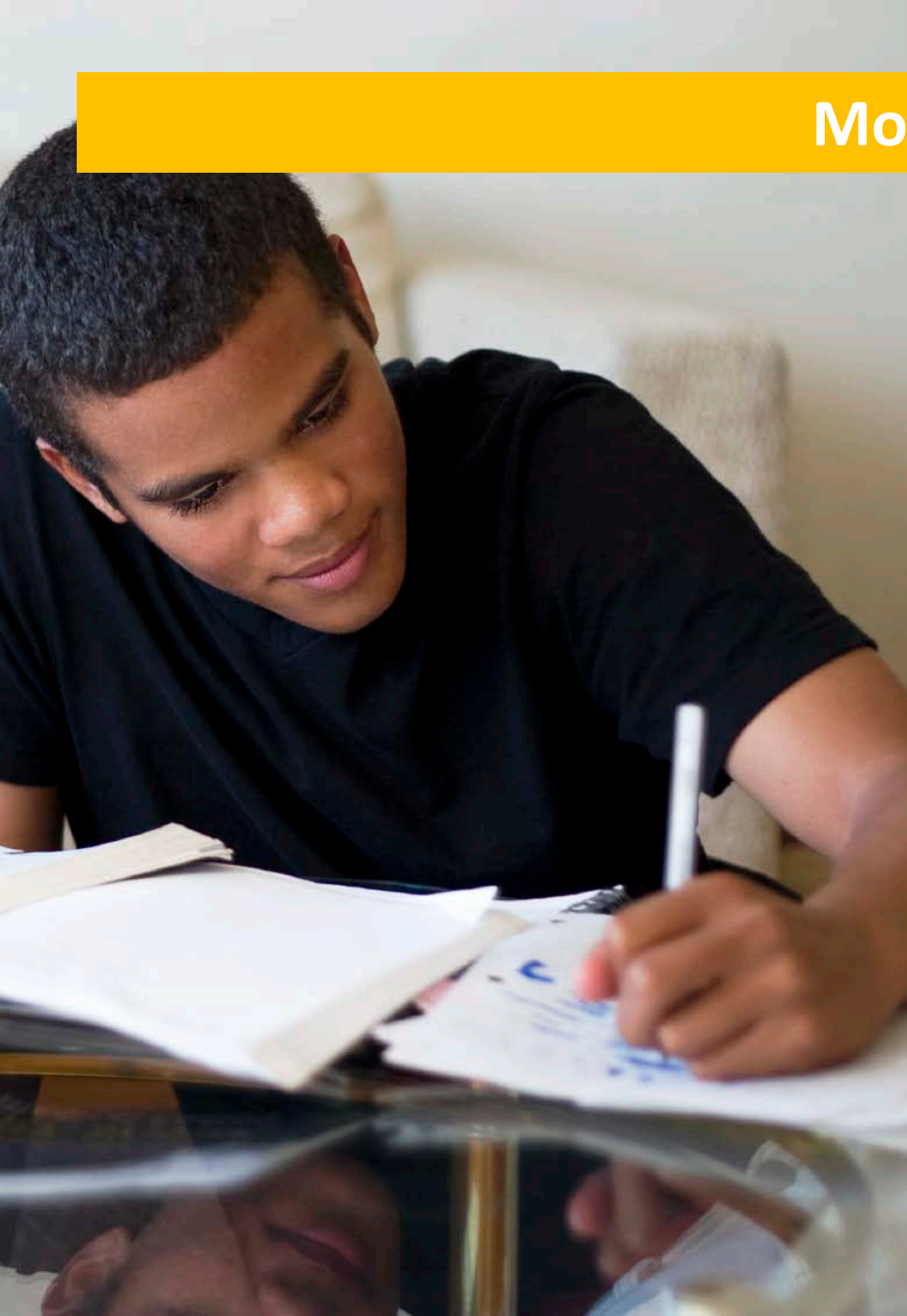
The State Benefits from Increasing Property Tax Revenue



Money in Education Matters

Better funded schools lead to...

- Smaller classrooms
- Greater access to science labs, computers, art & music,
- Professional development and support for teachers



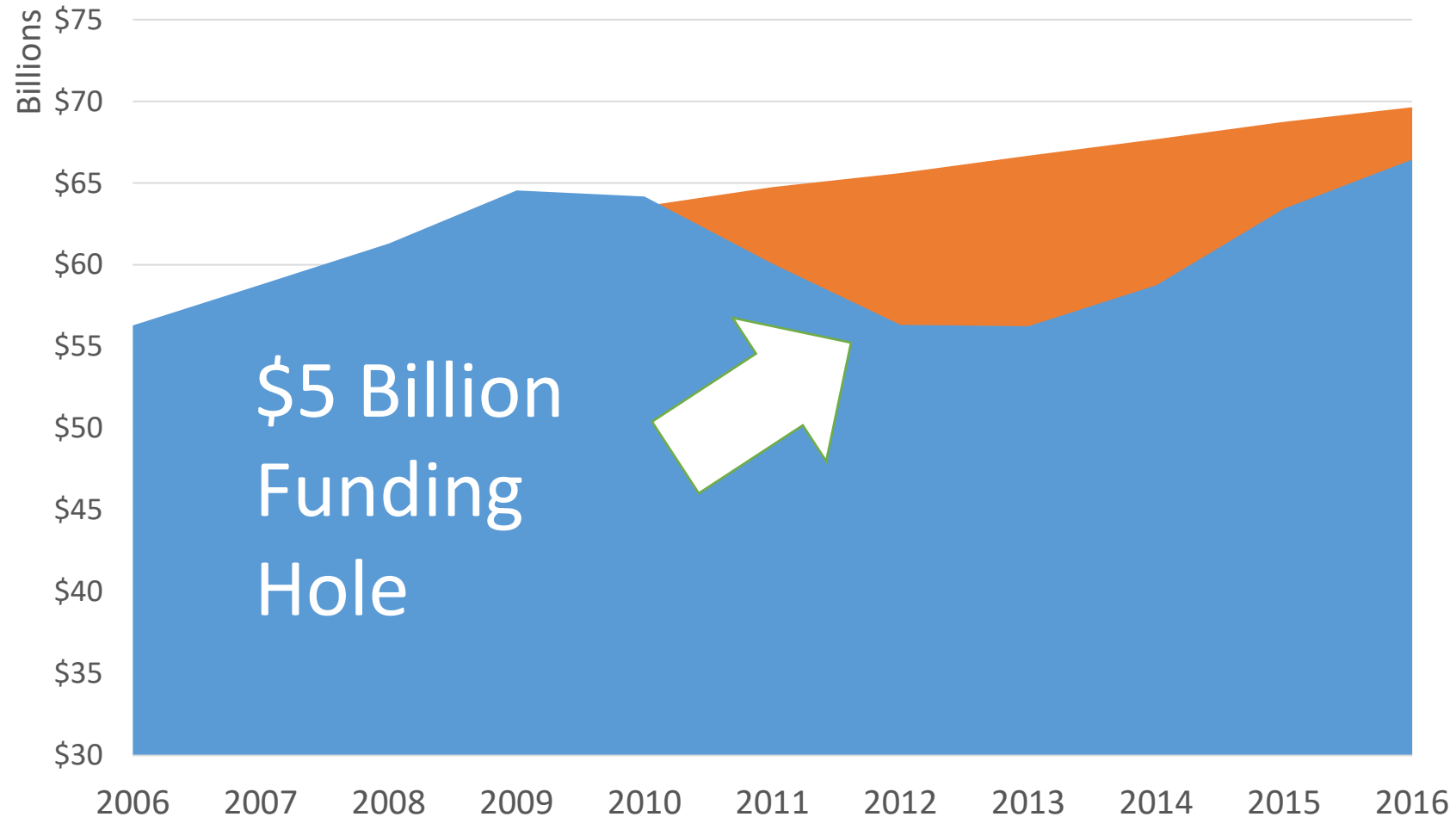


It's time to renovate our school finance system

Villanueva@cphp.org
[@chandrakus](#)

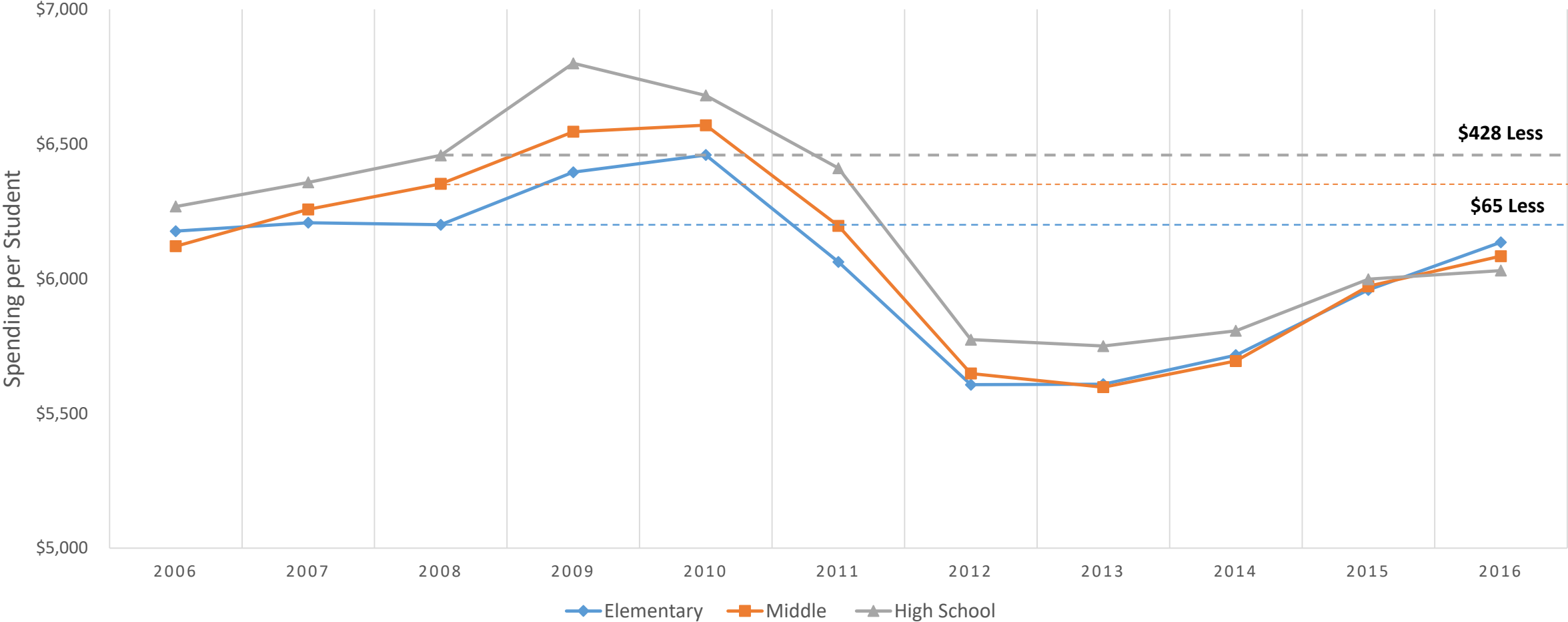
Adequacy: Resources to Meet Standards

Lost Half Decade



Adequacy: Resources to Meet Standards

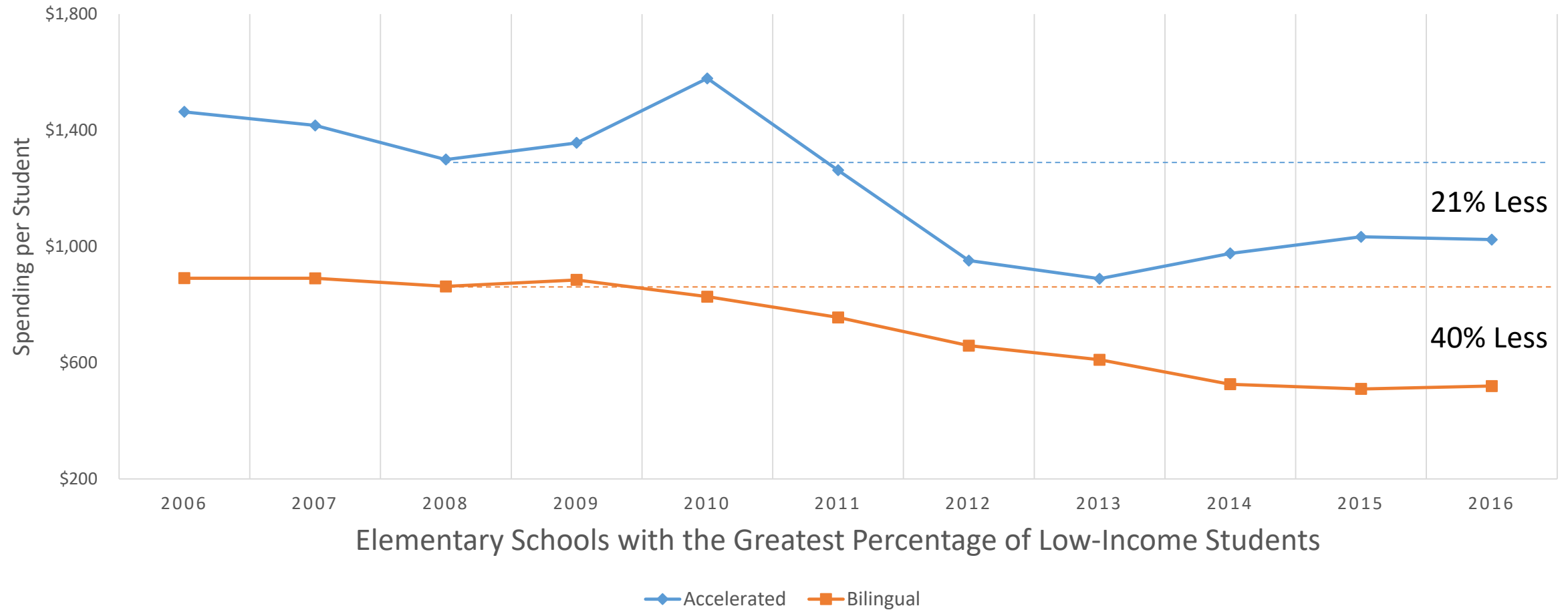
Instructional Spending Lags Behind Pre-Recession Levels



Source: TEA PIEMS Financial Data, adjusted for 2016 dollars. Instructional spending includes basic education, special education, career and technical education, bilingual education, and accelerated education.

Adequacy: Resources to Meet Standards

Spending Drastically Declined for Kids Who Need the Most Support



Source: TEA PIEMS Financial Data. Elementary school campuses placed in quartiles based on number of students participating in the federal free or reduced lunch program.

Remodeling the System

All Good Remodels Have Plans and Goals

HB 21: Texas Commission on Public School Finance

Total of 13 Members

4 Gov. Appointees

Scott Brister

(Former Supreme Court of TX
Justice – Austin)

Melissa Martin

(CTE Teacher – Galena Park ISD)

Elvira Reyna

(TX Board of Professional
Engineers – Mesquite)

Todd Williams

(The Commit Partnership – Dallas)

4 Lt. Gov. Appointees

Sen. Larry Taylor

(Friendswood)

Sen. Bettencourt

(Houston)

Sen. West

(Dallas)

Dr. Douglas Killian

(Pflugerville ISD Supt.)

4 Speaker Appointees

Rep. Huberty

(Houston)

Rep. Bernal

(San Antonio)

Rep. Ken King

(Canadian)

Nicole Conley Johnson

(CFO – Austin ISD)

1 SBOE Appointee

Keven Ellis

(SBOE Member -Lufkin)