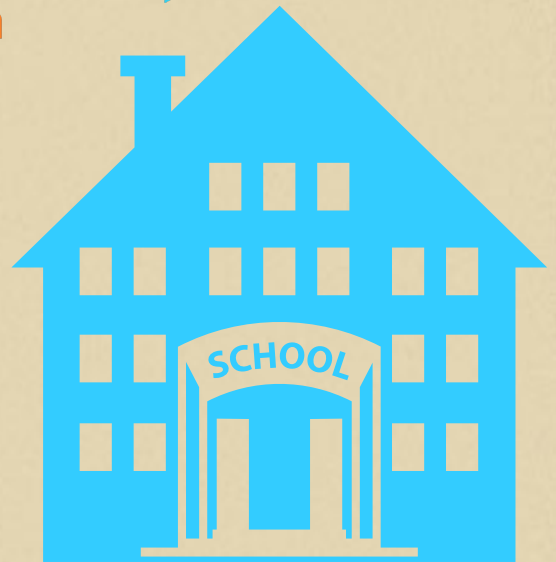


Whole School Reform

The whole school reform model requires a partnership with an outside entity and must address, at a minimum and in a comprehensive and coordinated manner, the following components:



1. School Leadership
2. Teaching and Learning
3. Non-Academic Supports for Students
4. Family and Community Engagement

Implement an evidenced-based whole school reform model for all students in the school in partnership with a model developer. Approved models from the federal SIG office can be found here: <http://www2.ed.gov/programs/sif/sigevidencebased/index.html>



Efficacy

The selected reform model must be supported by at least one study that meets What Works Clearinghouse evidence standards

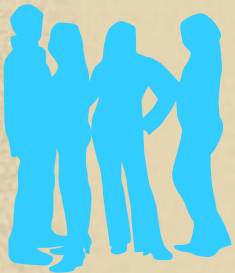


Impact

The selected reform model must show a statistically significant favorable impact on a student academic achievement or attainment outcome

Evidence

Evidence supporting the efficacy of the model must include a sample population or setting similar to the population of the school being served



Academics

The model must be designed to improve academic achievement or attainment

Questions to Consider:

- What are the conditions of the contractual arrangement between the LEA and the model developer?
- Is the strategy developer also the Lead Partner, or does a third party serve in that capacity?
- How will the LEA select a new leader for the school, and what experience, training, and skills will the new leader be expected to possess?
- How will the LEA enable the new leader to make strategic staff replacements?
- What is the LEA's own capacity to support the implementation of required, recommended, and diagnostically determined strategies?
- What changes decision-making policies and mechanisms (including greater school-level flexibility in budgeting, staffing, and scheduling) must accompany the implementation of this model?
- What changes in operational practice must accompany the transformation, and how will these changes be brought about and sustained?