

STUDENTS BY DEMOGRAPHIC GROUP

	Number of Students	% of Total	% Change from 2013
African American	650,919	12.7%	1.02%
American Indian	20,142	0.4%	-7.25%
Asian	189,483	3.7%	3.32%
Hispanic	2,660,463	51.8%	2.42%
Pacific Islander	6,778	0.1%	2.42%
White	1,511,700	29.4%	-0.27%
Two or More Races	96,395	1.9%	7.74%
Total	5,135,880	100.0%	1.52%
Economically Disadvantaged	3,092,125	60.2%	1.22%
Limited English Proficient	899,780	17.5%	4.14%

STUDENTS BY GRADE

	Number of Students	% of Total	% Change from 2013
Kindergarten & Earlier	629,389	12.20%	-0.17%
Elementary School (1-5)	1,959,368	38.30%	1.88%
Middle School (6-8)	1,141,440	22.20%	1.57%
High School (9-12)	1,405,683	27.30%	1.76%
Total	5,135,880	100.00%	1.52%

STUDENTS BY PROGRAM

	Number of Students	% of Total	% Change from 2013
Bilingual/ESL	878,569	17.1%	4.58%
Career & Technology	1,140,598	22.2%	2.68%
Gifted & Talented	391,932	7.6%	1.12%
Special Education	434,825	8.5%	0.88%

ATTENDANCE, COMPLETION & DROPOUTS

2012-13 ATTENDANCE RATE

	African American	Hispanic	White	Econ. Disadv.	Asian
All	95.8%	95.6%	95.9%	95.4%	97.7%

COMPLETION GRADES 9-12 (CLASS OF 2013)

	Graduated	Rec'd GED	Cont'd H.S.	Dropped Out (4-yr.)
African American	84.1%	0.7%	5.3%	9.9%
American Indian	85.8%	1.3%	4.4%	8.5%
Asian	93.8%	0.2%	3.0%	3.0%
Hispanic	85.1%	0.8%	5.9%	8.2%
Pacific Islander	89.5%	0.5%	4.7%	5.3%
White	93.0%	0.9%	2.6%	3.5%
Two or More Races	91.7%	0.9%	3.1%	4.4%
State	88.0%	0.8%	4.6%	6.6%
Econ. Disadv.	85.2%	0.9%	5.4%	8.5%

2012-13 DROPOUTS BY ETHNICITY

GRADES 7-8 AND 9-12

	Grade 7-8	Annual Dropout Rate	Grade 9-12	Annual Dropout Rate
African American	364	0.4%	6,120	3.3%
American Indian	n/a	0.5%	n/a	2.5%
Asian	27	0.1%	420	0.8%
Hispanic	2,311	0.6%	19,247	2.8%
Pacific Islander	n/a	0.2%	n/a	2.2%
White	430	0.2%	5,155	1.1%
Two or More Races	37	0.3%	365	1.5%
State	3,187	0.4%	31,509	2.2%
Econ. Disadv.	2,639	0.6%	20,217	2.6%

n/a Information not available.

2014 STAAR & TAKS

ACCOUNTABILITY INDICATOR
PHASE-IN 1 LEVEL II OR ABOVE

Includes grades 3-12

	All Tests	Reading	Math	Writing	Science	Social Studies
ALL	77%	76%	78%	72%	78%	76%
African American	67%	68%	66%	64%	69%	70%
American Indian	78%	78%	78%	71%	80%	79%
Asian	93%	91%	94%	91%	93%	93%
Hispanic	72%	71%	74%	67%	73%	70%
Pacific Islander	79%	78%	81%	75%	83%	80%
White	87%	87%	87%	82%	89%	86%
Two or More Races	84%	85%	83%	80%	86%	83%
Econ. Disadv.	69%	69%	71%	64%	71%	67%

END-OF-COURSE EXAMS
PHASE-IN 1 LEVEL II OR ABOVE

Includes grades 8-12

	English	English II	Algebra I	Biology	U.S. History
ALL	67%	69%	80%	89%	92%
African American	58%	60%	71%	85%	89%
American Indian	70%	72%	80%	92%	93%
Asian	86%	87%	95%	95%	97%
Hispanic	61%	63%	77%	86%	90%
Pacific Islander	72%	66%	83%	90%	92%
White	80%	83%	89%	95%	96%
Two or More Races	78%	81%	87%	94%	95%
Econ. Disadv.	58%	60%	74%	85%	88%

TAKS EXIT-LEVEL CUMULATIVE PASS RATE

	State	African American	Hispanic	White	Econ. Disadv.
Class of 2014	93%	89%	92%	97%	90%
Class of 2013	94%	89%	92%	97%	91%

DISTRICT RATINGS (INCLUDING CHARTERS)

	Districts	% of Total
Met Standard/Alternative	1,107	90.2%
Met Standard	1,073	87.4%
Met Alternative Standard	34	2.8%
Improvement Required	110	9.0%
Not Rated	10	0.8%
Data Integrity Issues	-	0.0%
Total Districts/Charters	1,227	100.0%

CAMPUS RATINGS (INCLUDING CHARTERS)

	Campuses	% of Total
Met Standard/Alternative	7,285	85.0%
Met Standard	7,041	82.1%
Met Alternative Standard	244	2.8%
Improvement Required	733	8.5%
Not Rated	555	6.5%
Data Integrity Issues	1	0.0%
Total Districts	8,574	100.0%

2013-14 SCHOOL FIRST RATINGS

Based on School Year 2012-2013 Data

	Districts		Charters	
	Count	% of Total	Count	% of Total
Superior Achievement	912	88.98%	76	37.62%
Above Standard Achievement	83	8.10%	53	26.24%
Standard Achievement	16	1.56%	31	15.35%
Substandard Achievement	12	1.17%	40	19.80%
Undetermined	2	0.20%	2	0.99%
Total	1,025	100.00%	202	100.00%

GRADUATES

Class of 2013

	Graduates (incl. Sp. Ed.)	All Graduates %
African American	38,798	12.9%
American Indian	1,311	0.4%
Asian	11,650	3.9%
Hispanic	139,785	46.4%
Pacific Islander	394	0.1%
White	104,466	34.7%
Two or More Races	5,014	1.7%
Total	301,418	100%
Distinguished Achievement	41,847	13.88%
Recommended H.S.	204,173	67.74%
Minimum	48,103	15.96%
Individualized Education Program	7,295	2.42%
Total	301,418	100.0%
Total Special Education	24,744	8.2%

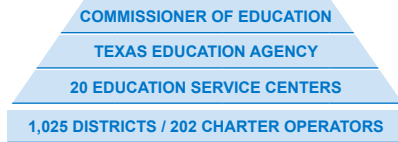
COLLEGE ADMISSIONS TESTING

Class of 2013

	% Tested	SAT Average	ACT Average
African American	66.7%	1254	17.5
American Indian	58.9%	1425	20.7
Asian	90.2%	1633	25.0
Hispanic	57.2%	1317	18.5
Pacific Islander	61.7%	1378	20.9
White	68.2%	1558	23.0
Two or More Races	70.2%	1516	22.3
State	63.8%	1422	20.6

GRADUATES & COLLEGE READINESS

2014 DISTRICT & CAMPUS RATINGS



Size	Number of Students	Number of Districts/Charters	% of All Students
50,000 & Over	1,483,472	18	29%
25,000-49,999	1,136,219	31	22%
10,000-24,999	924,318	59	18%
5,000-9,999	488,424	70	9%
3,000-4,999	348,091	90	7%
1,600-2,999	300,237	138	6%
1,000-1,599	183,324	146	4%
500-999	176,087	246	3%
Under 500	111,753	429	2%
Total	5,151,925	1,227	100%

8,571 CAMPUSES (INCLUDING 588 CHARTERS)

Campus Type	Number of Students	Number of Campuses	% of All Students
High School	1,343,982	1,490	26.17%
Junior High School	197,432	295	3.85%
Middle School	896,130	1,354	17.45%
Elementary School	2,520,727	4,558	49.08%
Elementary & Secondary	177,462	872	3.46%
Other Grade Group	147	2	0.00%
Total	5,135,880	8,571	100%

DISTRICT STAFF BY CATEGORY		
	Full-Time Equivalents	Avg. Base Salary
Teachers	334,511	\$49,692
Campus Administration	19,207	\$72,764
Central Administrators	6,785	\$94,630
Professional Support	61,075	\$58,551
Total Professionals	421,578	
Educational Aides	62,010	\$19,389
Auxiliary Staff	172,954	\$23,576
Total Staff	656,541	

TEACHER PROFILES		
	Full-Time Equivalents	% of Total
Gender		
Female	256,699	76.7%
Male	77,812	23.3%
Ethnicity		
African American	32,074	9.6%
American Indian	1,219	0.4%
Asian	4,553	1.4%
Hispanic	84,413	25.2%
Pacific Islander	285	0.1%
White	208,435	62.3%
Two or More Races	3,533	1.1%
Experience		
First Year	27,784	8.3%
1-5 years	84,723	25.3%
6-10 years	76,407	22.8%
11-20 years	90,395	27.0%
20+ years	55,202	16.5%

DISTRICT REVENUE (ACTUAL 2012-13)		
By Source		
48.40% Local \$24.24 billion	40.50% State \$20.28 billion	11.10% Federal \$5.57 billion
Total Revenue (100%)		\$50,087,166,792
Average Local Adopted Tax Rate		\$1.25
Total Revenue Per Student		\$9,903

DISTRICT EXPENDITURES (ALL FUNDS 2012-13)	
By Function (as percent of total operating expenditures)	
Instructional 57.2%	Other 24.8%
Administrative 3.2%	Plant Services 10.3%
Support 4.6%	
Total Expenditures	\$53,356,468,731
Total Expenditures Per Pupil	\$10,549
Total Operating Expenditures	\$31,518,985,822
Total Operating Expenditures Per Pupil	\$6,232

STATE BOARD OF EDUCATION Members		
Martha Dominguez District 1 El Paso	Donna Bahorich District 6 Houston	Patricia Hardy District 11 Fort Worth
Ruben Cortez, Jr. District 2 Brownsville	David Bradley District 7 Beaumont	Geraldine Miller District 12 Dallas
Marisa Perez District 3 San Antonio	Barbara Cargill District 8 The Woodlands	Erika Beltran District 13 Dallas
Lawrence A. Allen, Jr. District 4 Fresno	Thomas Ratliff District 9 Mount Pleasant	Sue Melton-Malone District 14 Waco
Ken Mercer District 5 San Antonio	Tom Maynard District 10 Florence	Marty Rowley District 15 Amarillo

Information contained in this pamphlet was compiled from data provided by the PEIMS collection, the TAPR report, School FIRST, and testing companies. For more information, contact:
Texas Education Agency
Division of Communications and SBOE Support: (512) 463-9000
www.tea.texas.gov/communications/pocket-edition/

For additional copies of this brochure, visit:
TEA Office of Publications
www.tea.texas.gov/publications/info/

BR15 130 02
January 2015

POCKET EDITION

2013-14 Texas Public School Statistics

Texas Education Agency
Michael Williams
Commissioner of Education

The Texas public school system consists of:

- 1,227 school districts and charters
- 8,571 campuses
- 334,511 teachers
- 5.15 million students

The Texas student makeup is:

- 51.8% Hispanic
- 29.4% White
- 12.7% African American
- 3.7% Asian
- 1.9% Two/More Races
- 0.4% American Indian
- 0.1% Pacific Islander
- 60.2% Economically Disadvantaged
- 17.5% Limited English Proficient