

Administrator Experience 2008-2012

The first table below presents the number of administrators employed as Principals, Assistant Principals, Superintendents, and Assistant Superintendents with average years of experience in the Texas public school system. The second table and the line graph show percentages of Principals, Assistant Principals, Superintendents, and Assistant Superintendents by years of experience, grouped into 9-year ranges.

Definition. Experience is number of years in the Texas public school system.

Average administrator experience

- On average, Superintendents and Assistant Superintendents had nearly equal years of experience.
- Both groups had somewhat more experience than Principals, who had more experience than Assistant Principals.
- For all four groups, experience remained about the same over time.

Year	Principals		Assistant Principals		Superintendents		Asst. Superintendents	
	Number Employed	Average Experience	Number Employed	Average Experience	Number Employed	Average Experience	Number Employed	Average Experience
2011-12	7,885	20.3	9,362	16.2	1,170	23.4	998	23.5
2010-11	7,892	20.5	9,579	15.9	1,144	23.8	1,066	23.2
2009-10	7,796	20.6	9,382	15.9	1,157	23.7	1,054	23.7
2008-09	7,641	20.4	9,265	15.6	1,150	23.5	1,050	23.6
2007-08	7,461	20.6	8,989	15.8	1,137	23.7	1,027	23.6

Note. Lowest and highest years of experience were not included, as administrators new to the public school system cause all lowest experience results to be 0, and small numbers of very experienced administrators can produce misleading changes in the highest experience results.

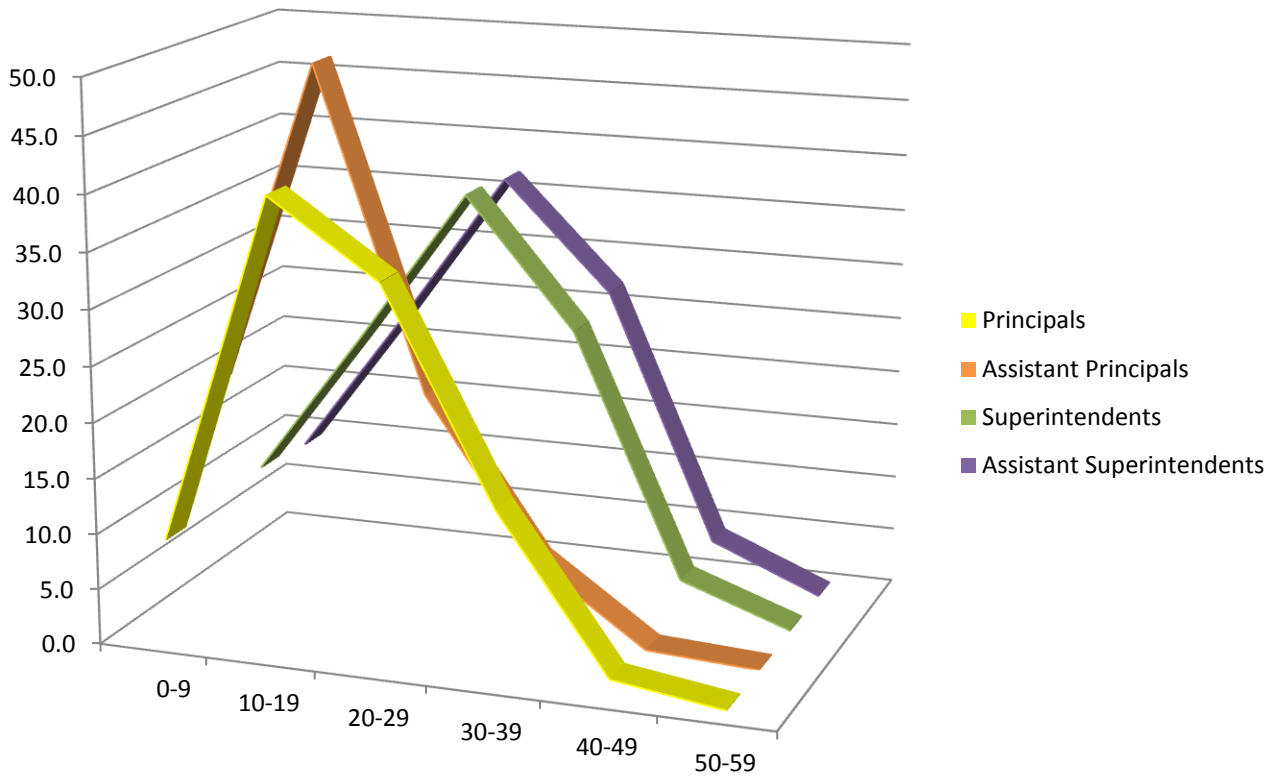
Administrator experience ranges

- About three-fourths of Principals had between 10 and 29 years of experience.
- Assistant Principals were more likely than the other groups to have had 0 to 9 years of experience.
- Nearly two-thirds of Superintendents and Assistant Superintendents had between 20 and 39 years of experience.
- Superintendents and Assistant Superintendents showed similar results.

	Years of Experience 2010-11					
	0-9	10-19	20-29	30-39	40-49	50-59
Principals	9.1	40.4	33.8	15.2	1.4	0.013
Assistant Principals	20.5	50.0	21.5	7.4	0.6	0.011
Superintendents	10.0	23.3	37.2	25.6	3.7	0.171
Assistant Superintendents	9.4	22.7	36.7	26.9	4.2	0.100

(Continued on Page 2)

Administrator Experience 2008-2012



Summary of methodology: Average experience. Five tables were extracted containing identification numbers, roles, and years of experience for all Principals, Assistant Principals, Superintendents, and Assistant Superintendents employed in fiscal years 2007-08 through 2011-12. For each of the four groups, the total number and average years of experience were computed. These results were combined into one table, and the table was reformatted so that the results by year were arranged horizontally rather than vertically.

Summary of methodology: Experience ranges. A table was extracted containing identification numbers, role codes, and years of experience of all employed Principals, Assistant Principals, Superintendents, and Assistant Superintendents for academic year 2011-12. To eliminate errors, administrators showing more than 80 years of experience were omitted. A second table was computed in which experience was grouped into 9-year categories: 0-9 years, 10-19 years, and so on. For each role code, a total of all administrators was obtained, together with a sum of administrators in each 9-year category. Each sum was taken as a percentage of the total. Finally, a line graph illustrating the percentages was developed.