

Employed Teacher Demographics 2007-2011

The table below presents numbers and percentages of regular classroom teachers, full-time substitute teachers, and the total for both, broken down by gender and by race or ethnicity. All employed teachers in the PEIMS data are included, irrespective of credentials, such as standard certificates, probationary certificates, and permits. The line graphs show results by race or ethnicity.

Definition. A regular classroom teacher is the teacher of record.

Results

- About three-fourths of regular classroom teachers were female, and about two-thirds were white.
- In comparison with regular classroom teachers, substitute teachers were somewhat less likely to be female, and less likely to be white.
- Substitute teachers were also much more likely to be black/African American.
- The percentage of whites declined somewhat among regular classroom teachers but tended to increase among substitute teachers.
- The percentage of American Indian/Alaska Natives increased among regular classroom teachers in academic year 2009-2010.
- The number of regular classroom teachers increased each year; the number of full-time substitute teachers declined until academic year 2010-11.

Year	Total	Female		Male		Black/African American		White		Hispanic/Latino		Asian		American Indian/ Alaska Native		Pacific Islander		Two or More Ethnicities	
		Num.	Pct.	Num.	Pct.	Num.	Pct.	Num.	Pct.	Num.	Pct.	Num.	Pct.	Num.	Pct.	Num.	Pct.	Num.	Pct.
Regular Classroom Teachers																			
2010-11	340,281	261,239	76.77	79,042	23.23	31,492	9.25	217,991	64.06	80,261	23.59	4,490	1.32	1,406	0.41	362	0.11	4,279	1.26
2009-10	338,191	260,251	76.95	77,940	23.05	31,371	9.28	216,284	63.95	77,406	22.89	4,229	1.25	4,113	1.22	334	0.10	4,454	1.32
2008-09	332,974	256,546	77.05	76,428	22.95	32,057	9.63	222,650	66.87	73,230	21.99	4,166	1.25	871	0.26				
2007-08	326,933	252,086	77.11	74,847	22.89	31,091	9.51	221,361	67.71	69,692	21.32	3,912	1.20	877	0.27				
2006-07	316,587	244,201	77.14	72,386	22.86	29,286	9.25	217,351	68.65	65,472	20.68	3,619	1.14	859	0.27				
Substitute Teachers																			
2010-11	488	363	74.39	125	25.61	75	15.37	259	53.07	132	27.05	16	3.28	1	0.20	1	0.20	4	0.82
2009-10	431	325	75.41	106	24.59	95	22.04	196	45.48	114	26.45	23	5.34	1	0.23	0	0.00	2	0.46
2008-09	475	328	69.05	147	30.95	103	21.68	230	48.42	126	26.53	15	3.16	1	0.21				
2007-08	589	404	68.59	185	31.41	157	26.66	216	36.67	201	34.13	14	2.38	1	0.17				
2006-07	749	505	67.42	244	32.58	199	26.57	304	40.59	222	29.64	21	2.80	3	0.40				
All Teachers																			
2010-11	340,711	261,565	76.77	79,146	23.23	31,565	9.26	218,220	64.05	80,368	23.59	4,506	1.32	1,407	0.41	363	0.11	4,282	1.26
2009-10	338,604	260,563	76.95	78,041	23.05	31,461	9.29	216,473	63.93	77,514	22.89	4,252	1.26	4,114	1.21	334	0.10	4,456	1.32
2008-09	333,433	256,867	77.04	76,566	22.96	32,157	9.64	222,873	66.84	73,350	22.00	4,181	1.25	872	0.26				
2007-08	327,500	252,477	77.09	75,023	22.91	31,234	9.54	221,574	67.66	69,888	21.34	3,926	1.20	878	0.27				
2006-07	317,323	244,700	77.11	72,623	22.89	29,480	9.29	217,649	68.59	65,692	20.70	3,640	1.15	862	0.27				

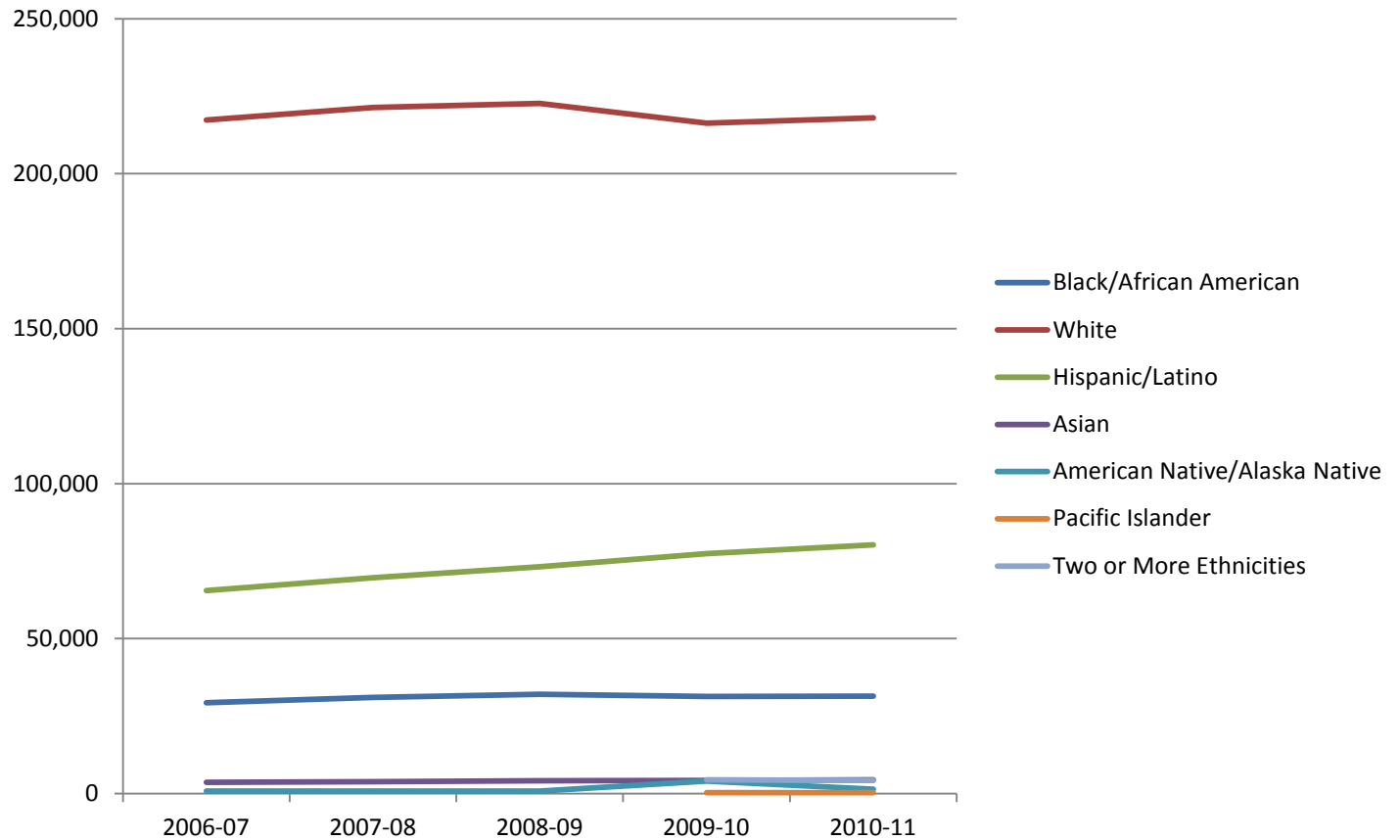
Employed Teacher Demographics 2007-2011

Race and Ethnicities by Year

Race or Ethnicity	2006-07	2007-08	2008-09	2009-10	2010-11
Black/African American	29,286	31,091	32,057	31,371	31,492
White	217,351	221,361	222,650	216,284	217,991
Hispanic/Latino	65,472	69,692	73,230	77,406	80,261
Asian	3,619	3,912	4,166	4,229	4,490
American Native/Alaska Native	859	877	871	4,113	1,406
Pacific Islander				334	362
Two or More Ethnicities				4,454	4,279

Regular Classroom Teachers

- The number of Hispanic/Latino regular classroom teachers consistently increased.
- In academic year 2009-10, the number of white teachers declined somewhat, while the number of American Native/Pacific Islander teachers increased.



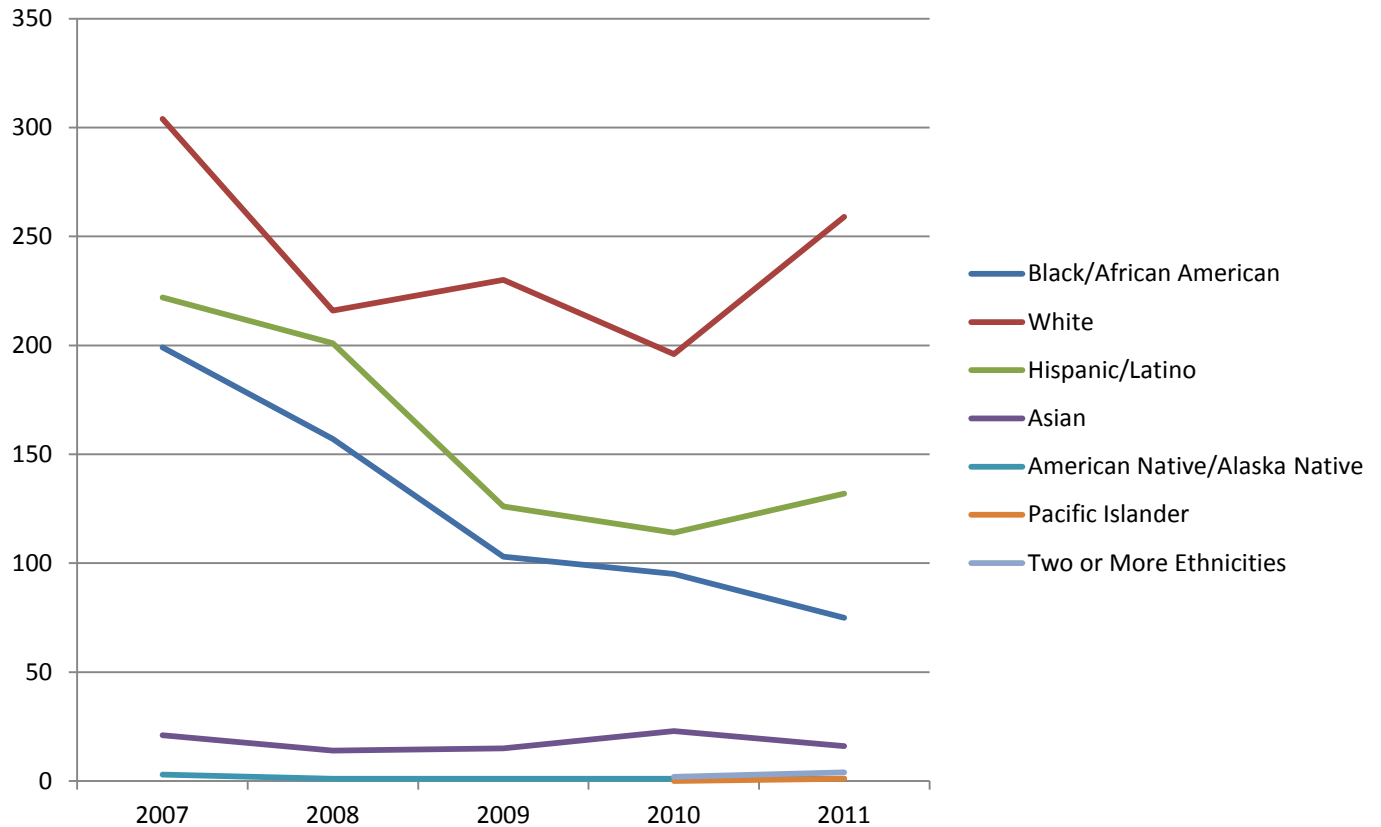
Employed Teacher Demographics 2007-2011

Races and Ethnicities by Year (Cont'd)

Race or Ethnicity	2007	2008	2009	2010	2011
Black/African American	199	157	103	95	75
White	304	216	230	196	259
Hispanic/Latino	222	201	126	114	132
Asian	21	14	15	23	16
American Native/Alaska Native	3	1	1	1	1
Pacific Islander				0	1
Two or More Ethnicities				2	4

Substitute Teachers

- The number of Black/African American substitute teachers declined markedly. The numbers of white and Hispanic/Latino teachers increased somewhat, following a large decline.



Employed Teacher Demographics 2007-2011

Summary of methodology. Five tables were extracted containing identification numbers, employment role codes, genders, and races or ethnicities of individuals employed as regular classroom teachers, full-time substitute teachers, and special duty teachers in academic years 2006-07 through 2010-11. The special duty teachers were recoded as regular classroom teachers. From each table, totals of all regular classroom teachers and full-time substitute teachers was obtained. Sums by gender and race or ethnicity were then computed, and each sum was taken as a percentage of the corresponding total.

Five additional tables were then extracted containing identification numbers, genders, and races or ethnicities of all teachers. The process outlined above was repeated. All results were combined into one table. Lastly, the process was repeated again with tables containing only identification numbers and races or ethnicities, and the results were used to construct line graphs.