



Summary Report - Test Performance

Report Date: MAY 2003
Date of Testing: SPRING 2003

All Students

"---" = No Data Reported For Fewer Than Five Students

English Language Arts

Table with 5 columns: Item, Total Items Tested, Average Items Correct (Number, Percent), and Commended Performance (Number, Percent). Rows include Basic Understanding, Literary Elements and Techniques, Analysis and Evaluation, and Written Composition.

Mathematics

Table with 5 columns: Item, Total Items Tested, Average Items Correct (Number, Percent), and Commended Performance (Number, Percent). Rows include Functional Relationships, Properties and Attributes of Functions, Linear Functions, and Mathematical Processes and Tools.

Social Studies

Table with 5 columns: Item, Total Items Tested, Average Items Correct (Number, Percent), and Commended Performance (Number, Percent). Rows include Issues and Events in U.S. History, Geographic Influences on History, and Critical-Thinking Skills.

Science

Table with 5 columns: Item, Total Items Tested, Average Items Correct (Number, Percent), and Commended Performance (Number, Percent). Rows include Nature of Science, Organization of Living Systems, and Motion, Forces, and Energy.

Administration Summary

Table with 3 columns: Item, Number, Percent. Rows include Number of Students Tested, Students Absent from All Tests, and Total Answer Documents Submitted.

Met Standard Summary

Table with 3 columns: Item, Number, Percent. Rows include Met STANDARD on All Tests Taken, and Did NOT Meet STANDARD on: One Test Only, Two Tests Only, Three Tests Only, All Four Tests.

Commended Performance Summary

Table with 3 columns: Item, Number, Percent. Rows include COMMENDED PERFORMANCE on All Tests Taken, and Did NOT Achieve COMMENDED PERFORMANCE on: One Test Only, Two Tests Only, Three Tests Only, All Four Tests.





## All Students

	Number of Students Tested	Average Scale Score	Percent Met Standard	Percent Commented Performance	Results for Each Objective										All Tests Taken						
					1	2			3			6			Number of Students Tested	Percent Met Standard	Percent Commented Performance				
					Basic Understanding	Literary Elements and Techniques	Short Answer Rating (Literary Selection)	Analysis and Evaluation	Short Answer Rating (Expository Selection)	Short Answer Rating (Connecting Selections)	Revising and Editing										
					Number of Items Tested in Each Objective																
					8	8			3			12			3			20			
Average Number of Items Correct / Average Percent of Items Correct																					
All Students	183011	2148	69	5	5.8	72	6.1	76	0.9	31	8.8	73	0.9	30	0.9	29	15.0	75	222905	49	1
Male	88923	2121	61	3	5.6	70	5.9	74	0.9	28	8.5	71	0.8	27	0.8	26	14.4	72	109683	45	1
Female	93985	2173	77	6	5.9	74	6.2	78	1.0	34	9.1	76	1.0	33	0.9	31	15.5	78	112961	53	0
No Information Provided	103	2075	54	4	4.9	62	5.3	66	0.7	24	7.9	66	0.7	22	0.6	19	12.7	64	261	40	1
Native American	551	2148	70	3	6.0	75	6.3	78	0.9	31	9.0	75	1.0	32	0.9	31	15.0	75	688	50	0
Asian	6873	2212	82	11	6.3	78	6.5	81	1.2	39	9.5	79	1.2	39	1.2	38	16.4	82	7874	71	2
African American	22707	2097	59	2	5.3	66	5.4	68	0.8	26	7.9	66	0.7	24	0.7	22	14.0	70	28399	33	0
Hispanic	57075	2110	63	2	5.3	66	5.6	71	0.9	28	8.3	69	0.8	27	0.7	24	13.9	70	75248	38	0
White	95467	2178	75	7	6.2	77	6.5	81	1.0	34	9.3	77	1.0	33	1.0	32	15.7	79	109827	59	1
No Information Provided	338	2062	48	1	4.9	61	5.1	63	0.7	23	7.4	62	0.6	20	0.6	18	12.1	61	869	36	0
Economically Disadvantaged	40915	2096	59	1	5.2	65	5.5	68	0.8	27	8.0	67	0.8	25	0.7	23	13.7	68	54220	34	0
Free Meals	9764	2122	65	2	5.5	68	5.8	72	0.9	30	8.4	70	0.8	28	0.8	26	14.4	72	11838	43	0
Reduced Meals	3834	2088	57	1	5.1	64	5.4	68	0.8	26	8.0	66	0.7	24	0.6	21	13.4	67	5150	35	0
Other	128063	2168	73	6	6.0	75	6.3	79	1.0	33	9.1	76	1.0	32	0.9	31	15.5	77	150515	56	1
No Information Provided	435	2074	50	2	5.0	63	5.3	66	0.7	25	7.7	64	0.7	22	0.6	20	12.7	63	1182	37	0
Title I, Part A Schoolwide Program Participants	49330	2118	65	2	5.4	68	5.7	71	0.9	29	8.4	70	0.8	27	0.7	25	14.2	71	62768	41	0
Targeted Assistance Participants	202	2036	38	0	4.7	58	5.0	63	0.6	19	7.2	60	0.5	17	0.4	14	11.8	59	375	19	0
Nonparticipants (Previous Participants)	249	2116	56	1	5.7	71	6.0	75	0.9	29	8.5	71	0.7	25	0.7	22	14.6	73	337	43	0
Homeless Participants at Non-Title I Schools	57	2109	65	2	5.3	66	5.6	70	0.8	26	8.7	72	0.7	23	0.7	22	14.1	70	75	43	0
Nonparticipants (Not Previous Participants)	132782	2160	71	6	5.9	74	6.2	78	1.0	32	9.0	75	0.9	31	0.9	30	15.3	76	158276	53	1
No Information Provided	391	2059	46	1	4.8	61	5.1	64	0.7	24	7.5	62	0.6	21	0.6	19	12.2	61	1074	36	0
Migrant	2816	2082	56	0	5.0	62	5.3	66	0.8	25	7.8	65	0.7	23	0.6	20	13.2	66	3896	31	0
Yes	179790	2149	70	5	5.8	73	6.1	76	0.9	31	8.8	74	0.9	30	0.9	29	15.0	75	217898	50	1
No	405	2063	46	1	4.9	61	5.2	65	0.7	24	7.5	63	0.6	21	0.6	19	12.3	61	1111	35	0
No Information Provided	3530	2022	33	0	4.2	52	4.5	57	0.6	19	6.7	56	0.6	19	0.5	16	11.3	57	8846	15	0
Limited English Proficient	179083	2150	70	5	5.8	73	6.1	76	0.9	32	8.8	74	0.9	30	0.9	29	15.0	75	212949	51	1
Yes	398	2061	47	2	4.9	61	5.2	64	0.7	24	7.5	62	0.6	21	0.6	19	12.2	61	1110	36	0
No	19	2015	42	0	4.7	59	4.6	58	0.7	23	6.6	55	0.8	26	0.8	26	12.9	64	49	20	0
Bilingual/ESL Program	2602	2015	30	0	4.1	51	4.4	56	0.6	19	6.6	55	0.5	18	0.5	16	11.1	55	7400	15	0
Bilingual	179982	2150	70	5	5.8	73	6.1	76	0.9	32	8.8	74	0.9	30	0.9	29	15.0	75	214300	50	1
ESL	394	2063	47	2	4.9	61	5.2	65	0.7	24	7.5	62	0.6	21	0.6	19	12.3	61	1094	35	0
Neither	7507	2019	33	0	4.4	55	4.8	59	0.6	20	6.8	57	0.5	17	0.5	15	11.0	55	12211	16	0
No Information Provided	175101	2154	71	5	5.8	73	6.1	77	1.0	32	8.9	74	0.9	31	0.9	29	15.1	76	209555	51	1
Yes	403	2062	46	2	4.9	61	5.1	64	0.7	24	7.5	62	0.6	20	0.6	19	12.2	61	1139	36	0
No	22829	2270	89	17	7.0	88	7.1	89	1.2	41	10.4	86	1.2	40	1.2	40	17.8	89	24983	84	3
Gifted/Talented	159609	2131	67	3	5.6	70	5.9	74	0.9	30	8.6	72	0.9	29	0.8	27	14.6	73	196594	45	0
Participants	573	2092	55	3	5.2	65	5.4	68	0.8	25	7.9	66	0.7	24	0.7	22	13.1	66	1328	39	0
Nonparticipants	53816	2067	50	1	4.9	61	5.2	65	0.7	24	7.6	63	0.7	22	0.6	19	12.8	64	73371	25	0
At-Risk	128781	2182	78	7	6.2	77	6.4	80	1.0	34	9.3	78	1.0	33	1.0	32	15.9	79	148382	61	1
Yes	414	2065	48	1	4.9	61	5.2	65	0.7	24	7.6	63	0.6	21	0.6	19	12.2	61	1152	37	0
No	44065	2137	68	4	5.7	71	6.0	75	0.9	30	8.7	72	0.9	29	0.8	27	14.7	74	53962	46	0
Career/Technology Education	48991	2134	67	3	5.6	71	6.0	75	0.9	30	8.6	72	0.9	29	0.8	27	14.7	73	57808	46	0
Elective	25812	2136	68	3	5.7	71	6.0	75	0.9	30	8.7	72	0.9	29	0.8	27	14.7	74	30228	48	0
Coherent Sequence	63687	2171	73	7	6.0	75	6.3	78	1.0	34	9.1	76	1.0	32	0.9	31	15.5	77	79675	54	1
Tech Prep	456	2062	46	2	4.8	61	5.1	64	0.7	24	7.5	62	0.6	20	0.6	19	12.2	61	1232	36	0
No																					
No Information Provided																					

\* Written Composition information can be found on the Summary Report and Written Performance Summary Report.



All Students

Table with columns: Demographic Group, Number of Students Tested, Average Scale Score, Percent Met Standard, Percent Commented, Results for Each Objective (1-10), All Tests Taken (Number of Students Tested, Percent Met Standard, Percent Commented). Includes sub-headers for 'Number of Items Tested in Each Objective' and 'Average Number of Items Correct / Average Percent of Items Correct'.

### All Students

	Number of Students Tested	Average Scale Score	Percent Met Standard	Percent Commented Performance	Results for Each Objective										All Tests Taken		
					1		2		3		4		5		Number of Students Tested	Percent Met Standard	Percent Commented Performance
					Issues and Events in U.S. History		Geographic Influences on History		Economic and Social Influences on History		Political Influences on History		Critical-Thinking Skills				
					Number of Items Tested in Each Objective												
					13		9		13		9		11				
Average Number of Items Correct / Average Percent of Items Correct																	
<b>All Students</b>	196731	2201	90	9	7.4	57	5.9	66	8.5	66	5.8	65	7.9	71	222905	49	1
<b>Male</b>	96623	2214	89	12	7.8	60	6.1	68	8.6	66	5.9	65	7.9	72	109683	45	1
<b>Female</b>	99958	2190	91	6	7.1	55	5.8	64	8.5	65	5.8	65	7.8	71	112961	53	0
<b>No Information Provided</b>	150	2144	75	5	6.5	50	5.4	60	7.4	57	5.0	55	6.9	63	261	40	1
<b>Native American</b>	613	2220	94	10	7.7	59	6.2	69	8.8	68	6.0	67	8.2	74	688	50	0
<b>Asian</b>	7359	2260	94	18	8.6	66	6.5	72	9.4	72	6.6	73	8.5	78	7874	71	2
<b>African American</b>	24874	2151	86	3	6.4	49	5.4	60	7.8	60	5.2	58	7.3	66	28399	33	0
<b>Hispanic</b>	64747	2154	85	3	6.6	51	5.5	61	7.9	61	5.2	58	7.1	64	75248	38	0
<b>White</b>	98625	2241	94	14	8.2	63	6.4	71	9.1	70	6.3	71	8.5	77	109827	59	1
<b>No Information Provided</b>	513	2127	74	4	6.1	47	5.2	57	7.3	56	4.9	54	6.6	60	869	36	0
<b>Economically Disadvantaged</b>	46925	2140	83	2	6.3	49	5.3	59	7.6	58	5.1	56	6.9	63	54220	34	0
<i>Free Meals</i>	10496	2174	89	4	6.9	53	5.7	63	8.2	63	5.5	61	7.5	68	11838	43	0
<i>Reduced Meals</i>	4306	2136	83	2	6.2	48	5.3	59	7.6	58	5.0	56	6.7	61	5150	35	0
<i>Other</i>	134239	2227	93	12	7.9	61	6.2	69	8.9	68	6.2	69	8.3	75	150515	56	1
<i>No Information Provided</i>	765	2136	76	4	6.3	48	5.2	58	7.4	57	5.0	56	6.8	62	1182	37	0
<b>Title I, Part A Schoolwide Program Participants</b>	54602	2163	87	4	6.7	52	5.6	62	8.0	62	5.4	60	7.3	66	62768	41	0
<i>Targeted Assistance Participants</i>	270	2088	70	0	5.3	40	4.8	54	6.5	50	4.4	49	6.1	55	375	19	0
<i>Nonparticipants (Previous Participants)</i>	299	2195	90	8	7.3	56	5.9	66	8.3	64	5.6	63	7.9	72	337	43	0
<i>Homeless Participants at Non-Title I Schools</i>	56	2197	91	7	7.7	59	5.9	66	8.7	67	5.7	64	7.3	66	75	43	0
<i>Nonparticipants (Not Previous Participants)</i>	140839	2217	91	11	7.7	59	6.1	68	8.7	67	6.0	67	8.1	74	158276	53	1
<i>No Information Provided</i>	665	2131	77	3	6.1	47	5.2	58	7.3	56	5.0	55	6.7	61	1074	36	0
<b>Migrant</b>	3351	2120	80	1	6.0	46	5.1	57	7.4	57	4.8	53	6.4	58	3896	31	0
<i>Yes</i>	192690	2203	90	9	7.5	57	6.0	66	8.5	66	5.9	65	7.9	72	217898	50	1
<i>No</i>	690	2127	75	3	6.1	47	5.2	57	7.3	56	4.9	54	6.6	60	1111	35	0
<i>No Information Provided</i>	7825	2063	61	0	5.2	40	4.3	48	6.1	47	3.9	44	5.3	48	8846	15	0
<b>Limited English Proficient</b>	188214	2207	91	9	7.5	58	6.0	67	8.6	66	5.9	66	8.0	72	212949	51	1
<i>Yes</i>	692	2129	75	3	6.1	47	5.2	57	7.3	56	4.9	55	6.6	60	1110	36	0
<i>No</i>	44	2094	66	0	6.0	46	4.8	53	6.5	50	4.2	46	5.8	52	49	20	0
<b>Bilingual/ESL Program</b>	6623	2058	59	0	5.1	39	4.2	47	6.0	46	3.9	43	5.2	47	7400	15	0
<i>Bilingual</i>	189330	2207	91	9	7.5	58	6.0	67	8.6	66	5.9	66	8.0	72	214300	50	1
<i>ESL</i>	678	2124	74	4	6.1	47	5.1	57	7.2	55	4.9	54	6.5	60	1094	35	0
<i>Neither</i>	9948	2103	71	2	5.8	45	4.9	55	6.8	52	4.4	49	6.2	56	12211	16	0
<i>No Information Provided</i>	186062	2207	91	10	7.5	58	6.0	67	8.6	66	5.9	66	8.0	72	209555	51	1
<b>Special Education</b>	721	2130	76	3	6.1	47	5.2	58	7.3	56	5.0	55	6.7	61	1139	36	0
<i>Yes</i>	22959	2332	99	31	9.7	74	7.1	79	10.4	80	7.5	83	9.5	86	24983	84	3
<i>No</i>	172899	2184	89	6	7.1	55	5.8	64	8.3	64	5.6	63	7.6	70	196594	45	0
<i>Participants</i>	873	2145	80	4	6.4	49	5.4	59	7.6	58	5.2	57	7.0	63	1328	39	0
<i>Nonparticipants</i>	61462	2126	80	2	6.1	47	5.2	58	7.3	56	4.8	53	6.6	60	73371	25	0
<i>No Information Provided</i>	134541	2236	94	12	8.0	62	6.3	70	9.1	70	6.3	70	8.4	77	148382	61	1
<b>At-Risk</b>	728	2129	76	3	6.1	47	5.2	58	7.3	56	4.9	55	6.7	61	1152	37	0
<i>Yes</i>	47745	2188	89	7	7.2	55	5.8	65	8.3	64	5.7	63	7.7	70	53962	46	0
<i>No</i>	50921	2192	90	7	7.3	56	5.9	65	8.4	65	5.7	64	7.7	70	57808	46	0
<b>Career/Technology Education</b>	26660	2194	91	7	7.3	56	5.9	65	8.5	65	5.8	64	7.8	71	30228	48	0
<i>Elective</i>	70619	2221	90	13	7.8	60	6.1	68	8.8	67	6.1	68	8.1	73	79675	54	1
<i>Coherent Sequence</i>	786	2131	77	4	6.1	47	5.2	58	7.3	56	5.0	55	6.7	61	1232	36	0
<i>Tech Prep</i>																	
<i>No Information Provided</i>																	

"---" = No Data Reported  
For Fewer Than Five Students



## Demographic Performance Summary — Science

Report Date: MAY 2003  
Date of Testing: SPRING 2003

## All Students

	Number of Students Tested	Average Scale Score	Percent Met Standard	Percent Commended Performance	Results for Each Objective										All Tests Taken		
					1	2	3	4	5	Number of Students Tested	Percent Met Standard	Percent Commended Performance					
					Nature of Science	Organization of Living Systems	Interdependence of Organisms and the Environment	Structures and Properties of Matter	Motion, Forces, and Energy								
					Number of Items Tested in Each Objective												
					17	8	8	11	11								
Average Number of Items Correct / Average Percent of Items Correct																	
All Students	187214	2096	67	2	9.5	56	3.7	47	4.7	59	5.1	46	6.3	57	222905	49	1
Male	91738	2101	67	3	9.5	56	3.8	48	4.8	60	5.2	47	6.3	58	109683	45	1
Female	95329	2092	68	1	9.4	55	3.7	46	4.6	58	5.0	46	6.2	57	112961	53	0
No Information Provided	147	2033	45	1	7.6	45	3.2	40	4.0	50	4.0	37	5.3	49	261	40	1
Native American	589	2104	69	1	9.8	57	4.0	50	4.8	60	5.0	45	6.4	58	688	50	0
Asian	7170	2175	85	7	11.3	66	4.5	56	5.3	67	6.6	60	7.7	70	7874	71	2
African American	23765	2045	52	0	8.1	48	3.2	40	4.2	52	4.2	38	5.4	49	28399	33	0
Hispanic	60728	2055	56	0	8.4	50	3.3	41	4.3	53	4.3	39	5.6	51	75248	38	0
White	94483	2131	77	3	10.4	61	4.1	52	5.1	63	5.7	52	6.8	62	109827	59	1
No Information Provided	479	2026	44	0	7.6	45	3.2	40	4.0	50	3.8	35	5.1	47	869	36	0
Economically Disadvantaged	Free Meals 44409	2045	52	0	8.1	48	3.2	40	4.2	52	4.2	38	5.4	49	54220	34	0
	Reduced Meals 10073	2072	62	1	8.9	52	3.4	43	4.5	56	4.7	43	5.9	53	11838	43	0
	Other 3947	2039	50	0	8.1	48	3.0	37	4.1	51	4.0	37	5.4	49	5150	35	0
	No Information Provided 128058	2118	74	2	10.0	59	4.0	50	4.9	62	5.5	50	6.7	60	150515	56	1
		727	2039	48	0	8.0	47	3.3	41	4.1	51	4.1	5.3	48	1182	37	0
Title I, Part A Schoolwide Program Participants	51413	2063	59	1	8.7	51	3.3	42	4.4	55	4.5	41	5.7	52	62768	41	0
Targeted Assistance Participants	243	2001	35	0	6.9	41	2.9	37	3.6	45	3.5	32	4.7	43	375	19	0
Nonparticipants (Previous Participants)	286	2109	66	3	9.9	58	4.2	52	4.8	60	5.0	45	6.5	59	337	43	0
Homeless Participants at Non-Title I Schools	58	2075	66	0	8.8	52	3.7	46	4.5	56	4.6	42	6.1	55	75	43	0
Nonparticipants (Not Previous Participants)	134580	2110	71	2	9.8	58	3.9	49	4.8	61	5.3	48	6.5	59	158276	53	1
No Information Provided	634	2036	46	0	7.9	46	3.3	41	4.1	51	4.0	36	5.2	47	1074	36	0
Migrant	Yes 3152	2032	47	0	7.8	46	3.0	38	4.0	50	3.9	36	5.2	47	3896	31	0
	No 183410	2098	68	2	9.5	56	3.8	47	4.7	59	5.1	46	6.3	57	217898	50	1
No Information Provided	652	2032	44	0	7.7	46	3.2	40	4.0	50	4.0	36	5.2	47	1111	35	0
Limited English Proficient	Yes 7416	1999	29	0	6.8	40	2.7	34	3.5	43	3.4	31	4.7	42	8846	15	0
	No 179141	2101	69	2	9.6	56	3.8	47	4.8	60	5.2	47	6.4	58	212949	51	1
No Information Provided	657	2033	45	0	7.8	46	3.2	40	4.1	51	4.0	36	5.2	47	1110	36	0
Bilingual/ESL Program	Bilingual 39	2011	38	3	7.0	41	3.1	38	3.5	44	3.3	30	5.2	47	49	20	0
	ESL 6290	1997	28	0	6.8	40	2.7	34	3.4	43	3.4	31	4.6	42	7400	15	0
	Neither 180194	2100	69	2	9.6	56	3.8	47	4.8	59	5.2	47	6.3	58	214300	50	1
No Information Provided	642	2030	43	0	7.7	45	3.2	40	4.0	50	3.9	35	5.2	47	1094	35	0
Special Education	Yes 9395	2005	33	0	6.9	41	3.0	38	3.7	47	3.5	32	4.6	41	12211	16	0
	No 177137	2102	69	2	9.6	57	3.8	47	4.8	60	5.2	47	6.4	58	209555	51	1
No Information Provided	682	2032	45	0	7.8	46	3.2	40	4.0	50	3.9	36	5.2	47	1139	36	0
Gifted/Talented	Participants 22047	2224	94	9	12.7	74	5.0	63	5.9	74	7.3	66	8.4	76	24983	84	3
	Nonparticipants 164331	2080	64	1	9.1	53	3.6	45	4.6	57	4.8	44	6.0	55	196594	45	0
No Information Provided	836	2043	50	0	8.1	48	3.3	41	4.2	52	4.1	37	5.4	49	1328	39	0
At-Risk	Yes 57840	2027	44	0	7.6	45	3.1	38	4.0	50	3.8	35	5.0	46	73371	25	0
	No 128682	2128	78	3	10.3	61	4.0	50	5.0	63	5.7	51	6.8	62	148382	61	1
No Information Provided	692	2033	46	0	7.8	46	3.2	40	4.1	51	4.0	36	5.2	48	1152	37	0
Career/Technology Education	Elective 45332	2084	64	1	9.2	54	3.6	45	4.6	57	4.9	44	6.1	55	53962	46	0
	Coherent Sequence 48345	2086	65	1	9.2	54	3.6	45	4.6	58	4.9	44	6.1	55	57808	46	0
	Tech Prep 25326	2090	67	1	9.4	55	3.6	45	4.7	58	5.0	45	6.2	56	30228	48	0
	No 67477	2116	71	3	9.9	58	3.9	49	4.9	61	5.4	49	6.6	60	79675	54	1
No Information Provided	734	2033	46	0	7.8	46	3.2	40	4.1	51	3.9	36	5.2	48	1232	36	0

## Written Performance Summary Report

Report Date: MAY 2003  
Date of Testing: SPRING 2003

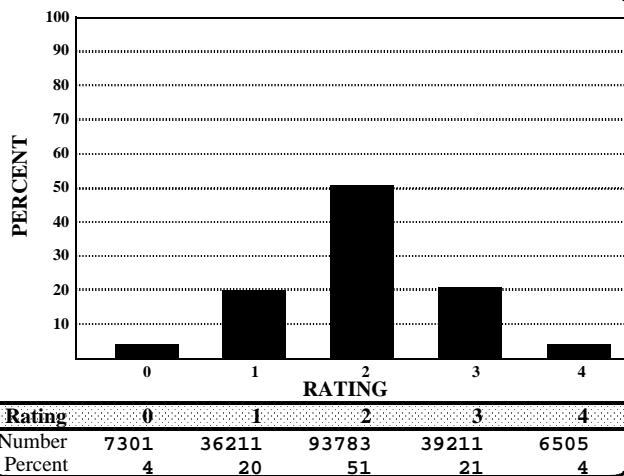
All Students

Number Tested: 183011

"---" = No Data Reported For Fewer Than Five Students

### Written Composition Summary

#### Written Composition Rating Summary



#### Analytic Information Summary

##### Analytic Category

Analytic Category	Written Composition	
	Rating of 0	Rating of 1
	Number of Papers	
1. Weak Focus and Coherence	102	6440
2. Weak or Illogical Organization	112	14253
3. Weak Development of Ideas	178	35539
4. Little or No Sense of Voice	24	8856
5. Little or No Control of Conventions	297	7293
6. Off Topic Response	281	*
7. Indecipherable Response	42	*
8. Insufficient Response	2685	*
9. No Writing Attempted	4285	*

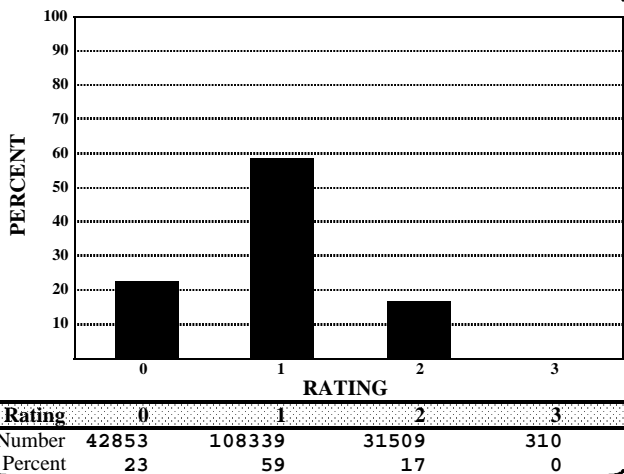
Papers receiving **Written Composition Ratings** of 0 or 1 were scored analytically.  
For each category the number of papers having that deficiency is indicated. A student's paper may be listed in more than one category.  
Papers receiving **Written Composition Ratings** of 2, 3, or 4 were not scored analytically.

\* Analytic Category is not given for a rating of 1.

### Short Answer Summary

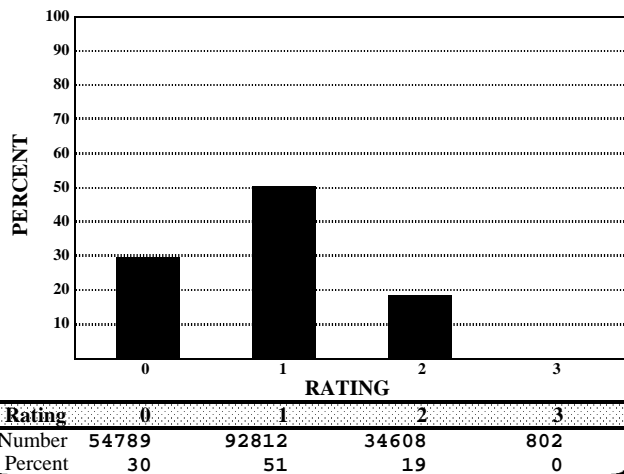
#### Literary Selection

#### Objective 2



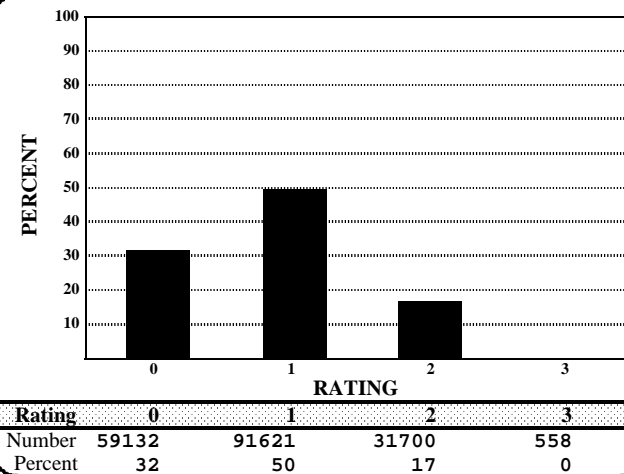
#### Expository Selection

#### Objective 3



#### Connecting Selections

#### Objective 3



## Phase-In Summary Report\*

Report Date: MAY 2003  
 Date of Testing: SPRING 2003

### Comparison of Spring 2003 Results at Phase-In Standards — All Students

	English Language Arts				Mathematics				Social Studies				Science				
	Number of Students Tested	Percent Met TAKS Standard			Number of Students Tested	Percent Met TAKS Standard			Number of Students Tested	Percent Met TAKS Standard			Number of Students Tested	Percent Met TAKS Standard			
		2 SEM Below Panel Rec.**	1 SEM Below Panel Rec.	Panel Rec.		2 SEM Below Panel Rec.**	1 SEM Below Panel Rec.	Panel Rec.		2 SEM Below Panel Rec.**	1 SEM Below Panel Rec.	Panel Rec.		2 SEM Below Panel Rec.**	1 SEM Below Panel Rec.	Panel Rec.	
----- = No Data Reported For Fewer Than Five Students																	
<b>All Students</b>	183011	69	66	61	198622	68	55	44	196731	90	85	78	187214	67	57	47	
Male	88923	61	58	54	97420	67	55	45	96623	89	84	78	91738	67	57	49	
Female	93985	77	74	69	101044	68	55	43	99958	91	85	78	95329	68	57	46	
No Information Provided	103	54	50	44	158	47	35	22	150	75	69	61	147	45	35	28	
Native American	551	70	68	64	590	70	55	44	613	94	88	82	589	69	60	50	
Asian	6873	82	79	76	7471	87	80	74	7359	94	92	88	7170	85	78	71	
African American	22707	59	54	48	25038	52	36	25	24874	86	78	69	23765	52	39	29	
Hispanic	57075	63	58	52	65797	57	42	30	64747	85	77	68	60728	56	43	32	
White	95467	75	73	70	99205	77	66	56	98625	94	90	86	94483	77	69	60	
No Information Provided	338	48	45	39	521	43	32	22	513	74	67	58	479	44	35	26	
Economically Disadvantaged Yes	54513	60	55	49	62116	55	40	28	61727	84	76	66	58429	53	41	29	
No	128063	73	71	67	135728	74	62	51	134239	93	89	83	128058	74	65	55	
No Information Provided	435	50	46	41	778	48	35	24	765	76	70	60	727	48	39	30	
Title I, Part A Participants	49589	64	60	54	55396	59	44	32	54928	87	79	71	51714	58	46	35	
Nonparticipants	133031	71	68	64	142545	71	59	48	141138	91	87	81	134866	71	61	52	
No Information Provided	391	46	42	37	681	45	32	22	665	77	70	59	634	46	37	28	
Migrant Yes	2816	56	50	41	3403	51	35	23	3351	80	70	59	3152	47	33	22	
No	179790	70	66	62	194506	68	55	44	192690	90	85	78	183410	68	57	48	
No Information Provided	405	46	42	38	713	45	31	22	690	75	69	58	652	44	35	27	
Limited English Proficient Yes	3530	33	26	20	7899	37	23	15	7825	61	47	34	7416	29	19	12	
No	179083	70	67	62	190013	69	56	45	188214	91	86	80	179141	69	59	49	
No Information Provided	398	47	42	37	710	45	32	22	692	75	69	58	657	45	36	27	
Bilingual Participants	19	42	42	26	46	41	26	17	44	66	52	41	39	38	21	13	
Nonparticipants	182589	69	66	61	197839	68	55	44	195968	90	85	78	186494	67	57	47	
No Information Provided	403	47	42	37	737	45	31	21	719	75	67	57	681	43	34	26	
ESL Participants	2602	30	23	17	6642	36	22	14	6623	59	45	32	6290	28	17	11	
Nonparticipants	180006	70	67	62	191262	69	56	45	189404	91	86	80	180261	69	58	48	
No Information Provided	403	47	42	38	718	45	31	21	704	74	67	57	663	43	34	26	
Special Education Yes	7507	33	28	22	8950	33	20	12	9948	71	60	49	9395	33	23	15	
No	175101	71	68	63	188935	69	57	45	186062	91	86	80	177137	69	59	49	
No Information Provided	403	46	42	37	737	45	32	23	721	76	69	59	682	45	36	27	
Gifted/Talented Participants	22829	89	88	87	23295	95	91	85	22959	99	98	97	22047	94	91	86	
Nonparticipants	159609	67	63	58	174430	64	50	38	172899	89	83	75	164331	64	53	42	
No Information Provided	573	55	50	46	897	51	37	27	873	80	74	64	836	50	40	31	
At-Risk Yes	53816	50	44	37	61927	45	29	18	61462	80	70	59	57840	44	31	21	
No	128781	78	75	72	135952	78	67	55	134541	94	91	87	128682	78	69	59	
No Information Provided	414	48	43	38	743	46	33	23	728	76	70	59	692	46	36	27	
Career/Technology Education Participants	118868	67	64	59	126538	66	52	40	125326	89	84	77	119003	65	54	44	
Nonparticipants	63687	73	70	66	71281	71	60	50	70619	90	86	80	67477	71	62	53	
No Information Provided	456	46	42	37	803	46	33	23	786	77	70	59	734	46	37	27	
Oral Administration Math	127	33	28	18	248	31	19	9	211	76	65	51	197	34	20	13	
Social Studies	138	37	28	21	185	37	25	15	279	74	63	50	246	29	18	11	
Science	203	51	44	37	269	42	30	21	329	77	68	57	329	38	29	19	

\* See page 35 of "Interpreting Assessment Reports" (2003) for more information about this report.

\*\* Passing Standard for Spring 2003