

Summary Report - Test Performance

Report Date: MAY 2005
Date of Testing: SPRING 2005

All Students

"---" = No Data Reported For
Fewer Than Five Students

English Language Arts

	Total Items Tested	Average Items Correct**					
		Number	Percent				
1. Basic Understanding	8	7.1	88				
2. Literary Elements and Techniques	8	6.3	79				
<i>Short Answer Rating (Literary Selection)</i>	3	1.3	43				
3. Analysis and Evaluation	12	9.6	80				
<i>Short Answer Rating (Expository Selection)</i>	3	1.3	42				
<i>Short Answer Rating (Connecting Selections)</i>	3	1.0	32				
6. Revising and Editing	20	17.3	86				
4-5. Written Composition - Effectiveness/Command of Conventions**							
Rating	0	1	2	3	4		
Number	1701	23023	113564	76884	14958		
Percent	1	10	49	33	6		
Number of Students Tested		Average Scale Score		Met Standard		Commended Performance	
230147		2272		201901 88		46951 20	

Mathematics

	Total Items Tested	Average Items Correct					
		Number	Percent				
1. Functional Relationships	5	3.6	72				
2. Properties and Attributes of Functions	5	3.5	69				
3. Linear Functions	5	3.4	68				
4. Linear Equations and Inequalities	5	3.6	72				
5. Quadratic and Other Nonlinear Functions	5	3.6	72				
6. Geometric Relationships and Spatial Reasoning ...	7	4.1	59				
7. Two- and Three-Dimensional Representations.	7	5.1	73				
8. Measurement and Similarity	7	4.3	61				
9. Percents/Proportions/Probability/Statistics.	5	3.2	63				
10. Mathematical Processes and Tools	9	5.4	60				
Number of Students Tested		Average Scale Score		Met Standard		Commended Performance	
228069		2201		183732 81		36156 16	

Social Studies

	Total Items Tested	Average Items Correct					
		Number	Percent				
1. Issues and Events in U.S. History	13	9.0	69				
2. Geographic Influences on History	9	7.0	78				
3. Economic and Social Influences on History	13	9.7	75				
4. Political Influences on History	9	6.8	75				
5. Critical-Thinking Skills	11	9.0	82				
Number of Students Tested		Average Scale Score		Met Standard		Commended Performance	
230317		2296		217231 94		58303 25	

Science

	Total Items Tested	Average Items Correct					
		Number	Percent				
1. Nature of Science	17	11.0	65				
2. Organization of Living Systems	8	4.7	59				
3. Interdependence of Organisms and the Environment	8	5.4	68				
4. Structures and Properties of Matter	11	6.1	56				
5. Motion, Forces, and Energy	11	7.4	68				
Number of Students Tested		Average Scale Score		Met Standard		Commended Performance	
228802		2159		184094 80		10383 5	

Administration Summary

	Number	Percent
Number of Students Tested	238926	92
Students Absent from All Tests	742	0
Students Exempt from All Tests: ARD	13175	5
Other Students Not Tested	8204	3
Total Answer Documents Submitted	261047	100

Met Standard Summary

	Number	Percent
Met STANDARD		
on All Tests Taken	163450	68
Did NOT Meet STANDARD on:		
One Test Only	39334	16
Two Tests Only	21798	9
Three Tests Only	9929	4
All Four Tests	4415	2

Commended Performance Summary

	Number	Percent
COMMENDED PERFORMANCE		
on All Tests Taken	6431	3
Did NOT Achieve COMMENDED PERFORMANCE on:		
One Test Only	20718	9
Two Tests Only	26147	11
Three Tests Only	49990	21
All Four Tests	135640	57

** Students who took the Braille version of the test are not included in the objective level results.



All Students

	Number of Students Tested	Average Scale Score	Percent Met Standard	Percent Commended Performance	Results for Each Objective										All Tests Taken		
					1		2		3		4		5		Number of Students Tested	Percent Met Standard	Percent Commended Performance
					Nature of Science	Organization of Living Systems	Interdependence of Organisms and the Environment	Structures and Properties of Matter	Motion, Forces, and Energy								
					Number of Items Tested in Each Objective												
					17	8	8	11	11								
Average Number of Items Correct / Average Percent of Items Correct																	
All Students	228802	2159	80	5	11.0	65	4.7	59	5.4	68	6.1	56	7.4	68	238926	68	3
Male	112497	2177	84	6	11.4	67	4.9	61	5.5	69	6.3	58	7.8	71	117748	70	3
Female	116153	2142	77	3	10.6	63	4.6	57	5.3	66	5.9	54	7.0	64	120938	67	2
No Information Provided	152	2081	56	1	9.2	54	3.8	48	4.6	57	4.8	43	6.3	58	240	50	2
Native American	694	2177	87	4	11.4	67	4.9	61	5.5	69	6.5	59	7.8	71	747	73	2
Asian	8688	2232	91	14	12.5	73	5.6	70	5.8	73	7.2	65	8.4	77	8856	85	10
African American	29738	2106	68	1	9.7	57	4.3	53	4.9	61	5.4	49	6.6	60	31449	52	0
Hispanic	82226	2113	70	1	9.9	58	4.3	54	5.0	62	5.4	49	6.7	61	86356	56	1
White	107154	2203	91	7	12.1	71	5.1	64	5.8	73	6.8	62	8.2	74	111009	82	4
No Information Provided	302	2084	59	1	9.3	55	3.8	48	4.6	58	5.0	46	6.3	57	509	50	2
Economically Disadvantaged	60282	2103	67	1	9.6	57	4.2	53	4.9	61	5.3	48	6.5	59	64051	51	1
Free Meals	15009	2132	76	2	10.4	61	4.5	56	5.2	65	5.7	52	7.0	64	15611	63	1
Reduced Meals	6932	2097	65	1	9.5	56	4.2	52	4.8	60	5.1	47	6.4	58	7289	49	0
Other	146115	2188	87	6	11.7	69	5.0	62	5.7	71	6.6	60	7.9	72	151272	77	4
No Information Provided	464	2084	60	1	9.3	55	3.8	48	4.7	59	5.0	46	6.2	57	703	49	2
Title I, Part A Schoolwide Program Participants	80081	2121	72	2	10.1	59	4.4	55	5.1	63	5.5	50	6.8	62	84284	58	1
Targeted Assistance Participants	931	2077	58	1	8.9	53	3.8	48	4.6	58	4.9	45	6.1	55	1000	40	1
Nonparticipants (Previous Participants)	17	2143	82	0	10.9	64	4.6	58	5.6	71	5.9	53	6.8	61	20	75	0
Homeless Participants at Non-Title I Schools	131	2107	69	1	9.5	56	4.4	54	5.1	64	5.5	50	6.4	58	138	50	0
Nonparticipants (Not Previous Participants)	147184	2180	85	6	11.5	68	4.9	61	5.6	70	6.5	59	7.8	71	152782	75	4
No Information Provided	458	2082	59	1	9.3	55	3.8	48	4.6	58	5.0	46	6.2	56	702	48	2
Migrant	3317	2087	61	1	9.2	54	4.1	51	4.7	59	5.0	45	6.2	56	3520	45	0
Yes	225050	2160	81	5	11.0	65	4.7	59	5.4	68	6.2	56	7.5	68	234738	69	3
No	435	2083	59	1	9.3	55	3.8	48	4.7	59	5.0	46	6.2	56	668	48	2
No Information Provided																	
Limited English Proficient	9886	2043	42	0	8.0	47	3.6	45	4.1	51	4.5	41	5.4	49	10649	19	0
Current LEP	1588	2094	62	1	9.3	55	4.2	53	4.7	58	5.2	47	6.3	57	1665	45	1
Non-LEP (Monitored 1st Year)	1354	2097	65	1	9.3	55	4.3	53	4.7	58	5.4	49	6.4	58	1414	48	0
Non-LEP (Monitored 2nd Year)	215468	2165	83	5	11.2	66	4.8	60	5.5	68	6.2	57	7.5	69	224443	71	3
Other Non-LEP	506	2079	58	1	9.2	54	3.8	47	4.6	58	5.0	45	6.1	55	755	47	2
No Information Provided	49	2068	61	0	8.9	52	4.0	50	4.2	53	4.8	44	5.8	53	53	40	0
Bilingual/ESL Program	8739	2040	40	0	7.9	47	3.6	45	4.0	51	4.5	41	5.3	48	9400	18	0
Bilingual	219540	2164	82	5	11.1	66	4.8	60	5.5	68	6.2	56	7.5	68	228761	71	3
ESL	433	2080	58	1	9.2	54	3.8	47	4.6	58	5.0	45	6.1	56	664	47	2
No Information Provided																	
Special Education	10407	2070	52	1	8.6	51	3.7	47	4.4	55	4.9	44	6.1	56	12759	34	0
Yes	217952	2163	82	5	11.1	65	4.8	60	5.4	68	6.2	56	7.5	68	225493	70	3
No	443	2082	59	1	9.3	55	3.8	47	4.7	58	5.0	46	6.2	56	674	48	2
No Information Provided																	
Gifted/Talented	27339	2282	98	19	13.7	81	6.0	75	6.4	80	7.8	71	9.1	83	27606	96	13
Participants	201000	2142	78	3	10.6	63	4.6	57	5.3	66	5.9	54	7.2	66	210621	65	1
Nonparticipants	463	2080	58	0	9.2	54	3.8	47	4.6	58	5.0	45	6.1	56	699	46	1
No Information Provided																	
At-Risk	110716	2097	66	1	9.5	56	4.1	51	4.8	60	5.2	48	6.5	59	117728	48	0
Yes	117635	2217	94	8	12.5	73	5.3	67	6.0	75	7.0	64	8.3	76	120519	89	5
No	451	2081	58	1	9.3	55	3.8	47	4.6	58	5.0	46	6.1	56	679	49	2
No Information Provided																	
Career/Technology Education	56503	2148	78	3	10.8	63	4.6	58	5.3	66	6.0	54	7.3	66	59292	66	2
Elective	62672	2151	80	3	10.9	64	4.6	58	5.4	67	6.0	55	7.3	67	65055	67	2
Coherent Sequence	35484	2151	81	3	10.8	64	4.7	59	5.4	67	6.0	54	7.3	67	36663	69	2
Tech Prep	73648	2179	83	7	11.4	67	4.9	61	5.5	69	6.4	58	7.7	70	77166	71	5
No	495	2082	59	1	9.3	55	3.8	48	4.6	58	5.0	46	6.2	56	750	48	2
No Information Provided																	

"---" = No Data Reported
For Fewer Than Five Students



Phase-In Summary Report*

Report Date: MAY 2005
Date of Testing: SPRING 2005

Comparison of 2005 Results at Phase-In Standards — All Students

	English Language Arts				Mathematics				Social Studies				Science			
	Number of Students Tested	Percent Met TAKS Standard			Number of Students Tested	Percent Met TAKS Standard			Number of Students Tested	Percent Met TAKS Standard			Number of Students Tested	Percent Met TAKS Standard		
		2 SEM Below Panel Rec.	1 SEM Below Panel Rec.	Panel Rec.		2 SEM Below Panel Rec.	1 SEM Below Panel Rec.	Panel Rec.		2 SEM Below Panel Rec.	1 SEM Below Panel Rec.	Panel Rec.		2 SEM Below Panel Rec.	1 SEM Below Panel Rec.	Panel Rec.
"---" = No Data Reported For Fewer Than Five Students																
All Students	230147	88	88	87	228069	88	81	72	230317	97	94	91	228802	88	80	71
Male	112912	85	84	83	111966	89	83	75	113318	98	95	93	112497	91	84	76
Female	117128	92	91	90	115958	87	79	69	116844	97	93	89	116153	86	77	66
No Information Provided	107	71	69	66	145	70	54	41	155	92	84	75	152	71	61	44
Native American	706	89	89	88	695	91	84	75	703	99	97	95	694	94	87	77
Asian	8693	93	93	92	8692	96	93	89	8712	98	97	95	8688	95	91	86
African American	30010	85	84	82	29624	79	67	54	29979	97	92	88	29738	80	68	55
Hispanic	83139	83	82	80	82086	83	72	61	82715	95	90	85	82226	81	70	57
White	107330	94	93	93	106680	94	90	83	107903	99	98	96	107154	95	91	84
No Information Provided	269	69	67	62	292	70	56	44	305	90	84	75	302	75	62	47
Economically Disadvantaged <i>Yes</i>	83265	82	81	79	81858	81	70	58	82855	95	90	84	82223	80	69	55
<i>No</i>	146501	92	92	91	145759	92	86	79	146998	99	97	95	146115	93	87	79
<i>No Information Provided</i>	381	70	67	62	452	69	57	45	464	90	84	77	464	74	61	47
Title I, Part A <i>Participants</i>	82120	84	83	81	80917	83	73	62	81639	96	91	86	81143	82	72	59
<i>Nonparticipants</i>	147630	91	91	90	146707	91	85	77	148218	98	96	94	147201	92	85	77
<i>No Information Provided</i>	397	66	64	60	445	69	56	45	460	90	85	77	458	74	60	46
Migrant <i>Yes</i>	3387	76	74	71	3308	78	65	53	3342	93	85	77	3317	75	61	47
<i>No</i>	226406	89	88	87	224341	88	81	72	226543	97	94	91	225050	89	81	71
<i>No Information Provided</i>	354	69	67	63	420	69	56	44	432	89	84	77	435	73	60	46
LEP <i>Current LEP</i>	10102	43	39	34	9875	63	49	35	9955	79	65	53	9886	56	41	29
<i>Non-LEP (Monitored 1st Year)</i>	1629	76	74	71	1580	79	67	55	1601	95	87	79	1588	76	62	48
<i>Non-LEP (Monitored 2nd Year)</i>	1379	79	77	74	1354	81	69	56	1360	94	87	80	1354	78	65	50
<i>Other Non-LEP</i>	216603	91	90	89	214769	90	82	73	216893	98	96	93	215468	90	83	73
<i>No Information Provided</i>	434	69	66	62	491	68	54	43	508	90	84	76	506	73	59	44
Bilingual <i>Participants</i>	49	73	73	73	47	72	53	47	45	84	76	71	49	69	57	35
<i>Nonparticipants</i>	229708	88	88	87	227567	88	81	72	229801	97	94	91	228284	88	81	71
<i>No Information Provided</i>	390	66	64	60	455	68	55	43	471	89	83	76	469	72	58	44
ESL <i>Participants</i>	8924	41	37	32	8771	62	47	34	8801	78	63	51	8739	55	40	27
<i>Nonparticipants</i>	220845	90	90	89	218862	89	82	73	221060	98	96	93	219612	90	82	72
<i>No Information Provided</i>	378	67	65	61	436	68	54	43	456	89	84	76	451	73	59	45
Special Education <i>Yes</i>	10024	64	62	58	9130	63	50	38	11309	89	79	71	10407	66	52	40
<i>No</i>	219744	90	89	88	218510	89	82	73	218564	98	95	92	217952	89	82	72
<i>No Information Provided</i>	379	67	65	61	429	69	56	44	444	90	85	77	443	74	60	46
Gifted/Talented <i>Participants</i>	27330	98	98	98	27366	99	98	97	27380	100	100	100	27339	99	98	96
<i>Nonparticipants</i>	202430	87	86	85	200255	87	78	68	202473	97	94	90	201000	87	78	67
<i>No Information Provided</i>	387	66	64	60	448	68	55	42	464	90	84	76	463	73	59	44
At-Risk <i>Yes</i>	112121	81	80	78	110051	79	66	52	111785	95	90	84	110716	79	66	51
<i>No</i>	117649	96	95	95	117584	97	94	90	118082	99	99	98	117635	97	94	89
<i>No Information Provided</i>	377	69	67	63	434	69	56	45	450	90	85	76	451	74	59	45
Career/Technology Education <i>Participants</i>	155785	88	88	86	153969	88	80	70	155775	97	94	91	154659	88	80	69
<i>Nonparticipants</i>	73929	89	88	87	73614	89	82	74	74043	97	95	92	73648	89	83	74
<i>No Information Provided</i>	433	69	66	62	486	68	56	44	499	90	85	76	495	74	59	46

* See "Interpreting Assessment Reports" (2005) for more information about this report.

Written Performance Summary Report

Report Date: MAY 2005
Date of Testing: SPRING 2005

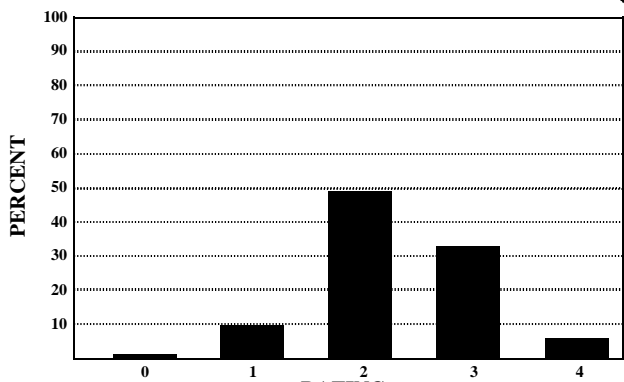
All Students

Number Tested: 230147

"---" = No Data Reported For
Fewer Than Five Students

Written Composition Summary**

Written Composition Rating Summary



Rating	0	1	2	3	4
Number	1701	23023	113564	76884	14958
Percent	1	10	49	33	6

Analytic Information Summary

Analytic Category

Analytic Category	Written Composition	
	Rating of 0	Rating of 1
	Number of Papers	
1. Weak Focus and Coherence	7	7144
2. Weak or Illogical Organization	23	7469
3. Weak Development of Ideas	47	21422
4. Little or No Sense of Voice	2	675
5. Little or No Control of Conventions	282	13178
6. Off Topic Response	62	*
7. Indecipherable Response	48	*
8. Insufficient Response	524	*
9. No Writing Attempted	1065	*

Papers receiving **Written Composition Ratings** of 0 or 1 were scored analytically.

For each category the number of papers having that deficiency is indicated. A student's paper may be listed in more than one category.

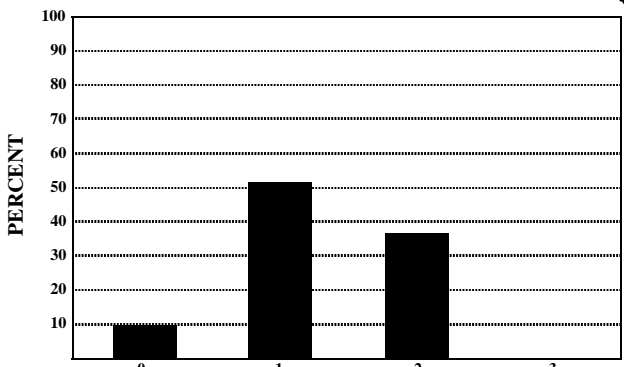
Papers receiving **Written Composition Ratings** of 2, 3, or 4 were not scored analytically.

* Analytic Category is not given for a rating of 1.

Short Answer Summary**

Literary Selection

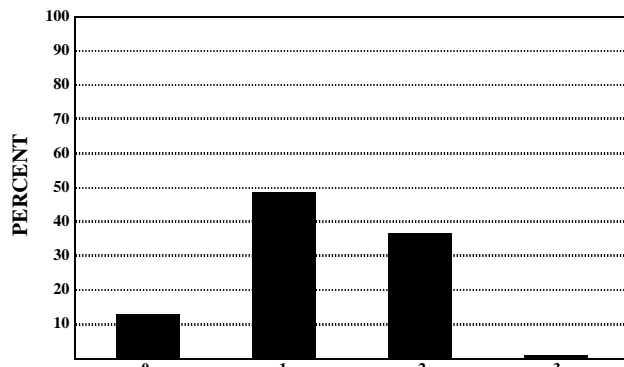
Objective 2



Rating	0	1	2	3
Number	24038	119410	85730	952
Percent	10	52	37	0

Expository Selection

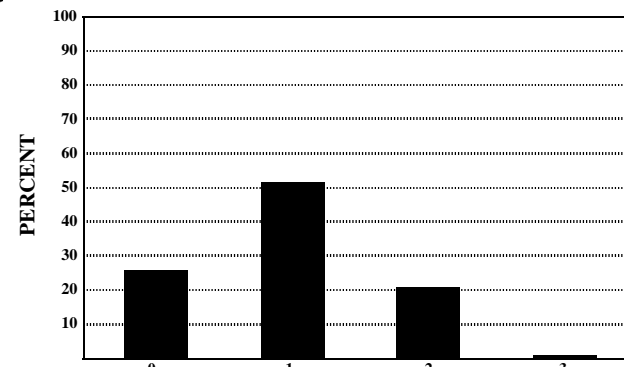
Objective 3



Rating	0	1	2	3
Number	30407	112694	85439	1590
Percent	13	49	37	1

Connecting Selections

Objective 3



Rating	0	1	2	3
Number	60706	118699	49288	1437
Percent	26	52	21	1

** Students who took the Braille version of the test are not included in this report.