



Summary Report - Test Performance

Report Date: AUGUST 2006
Date of Testing: JULY 2006

All Students

"---" = No Data Reported For
Fewer Than Five Students

English Language Arts

	Total Items Tested	Average Items Correct					
		Number	Percent				
1. Basic Understanding	8	6.3	79				
2. Literary Elements and Techniques	8	6.3	79				
<i>Short Answer Rating (Literary Selection)</i>	3	1.0	34				
3. Analysis and Evaluation	12	9.0	75				
<i>Short Answer Rating (Expository Selection)</i>	3	1.0	32				
<i>Short Answer Rating (Connecting Selections)</i>	3	0.7	22				
6. Revising and Editing	20	13.9	70				
4-5. Written Composition - Effectiveness/Command of Conventions							
<i>Rating</i>	0	1	2	3	4		
<i>Number</i>	405	6313	7428	1194	85		
<i>Percent</i>	3	41	48	8	1		
Number of Students Tested		Average Scale Score		Met Standard		Commended Performance	
15425		2141		7880 51		540 4	

Mathematics

	Total Items Tested	Average Items Correct					
		Number	Percent				
1. Functional Relationships	5	3.0	59				
2. Properties and Attributes of Functions	5	2.7	55				
3. Linear Functions	5	2.2	45				
4. Linear Equations and Inequalities	5	2.7	54				
5. Quadratic and Other Nonlinear Functions	5	2.4	48				
6. Geometric Relationships and Spatial Reasoning ...	7	2.2	32				
7. Two- and Three-Dimensional Representations.	7	3.5	50				
8. Measurement and Similarity	7	2.9	41				
9. Percents/Proportions/Probability/Statistics.	5	2.1	42				
10. Mathematical Processes and Tools	9	3.3	37				
Number of Students Tested		Average Scale Score		Met Standard		Commended Performance	
30606		2032		6439 21		95 0	

Social Studies

	Total Items Tested	Average Items Correct					
		Number	Percent				
1. Issues and Events in U.S. History	13	5.8	44				
2. Geographic Influences on History	9	4.8	53				
3. Economic and Social Influences on History	13	6.7	52				
4. Political Influences on History	9	4.7	52				
5. Critical-Thinking Skills	11	6.3	57				
Number of Students Tested		Average Scale Score		Met Standard		Commended Performance	
8180		2108		3897 48		243 3	

Science

	Total Items Tested	Average Items Correct					
		Number	Percent				
1. Nature of Science	17	7.8	46				
2. Organization of Living Systems	8	3.3	41				
3. Interdependence of Organisms and the Environment	8	4.3	54				
4. Structures and Properties of Matter	11	4.4	40				
5. Motion, Forces, and Energy	11	4.9	44				
Number of Students Tested		Average Scale Score		Met Standard		Commended Performance	
35271		2038		8344 24		50 0	

Administration Summary

	Number	Percent
Number of Students Tested	52553	74
Students Absent from All Tests	2573	4
Students Exempt from All Tests: ARD	1488	2
Other Students Not Tested	13980	20
Total Answer Documents Submitted	70594	100

Met Standard Summary

	Number	Percent
Met STANDARD		
on All Tests Taken	13538	26
Did NOT Meet STANDARD on:		
<i>One Test Only</i>	21426	41
<i>Two Tests Only</i>	12556	24
<i>Three Tests Only</i>	3748	7
<i>All Four Tests</i>	1285	2

Commended Performance Summary

	Number	Percent
COMMENDED PERFORMANCE		
on All Tests Taken	592	1
Did NOT Achieve COMMENDED PERFORMANCE on:		
<i>One Test Only</i>	26957	51
<i>Two Tests Only</i>	16064	31
<i>Three Tests Only</i>	6291	12
<i>All Four Tests</i>	2649	5

Summary Report - Group Performance

Report Date: AUGUST 2006
Date of Testing: JULY 2006

All Students

	English Language Arts				Mathematics				Social Studies				Science				All Tests Taken		
	Number of Students Tested	Average Scale Score	Percent Met Standard	Percent Com-mended	Number of Students Tested	Average Scale Score	Percent Met Standard	Percent Com-mended	Number of Students Tested	Average Scale Score	Percent Met Standard	Percent Com-mended	Number of Students Tested	Average Scale Score	Percent Met Standard	Percent Com-mended	Number of Students Tested	Percent Met Standard	Percent Com-mended
All Students	15425	2141	51	4	30606	2032	21	0	8180	2108	48	3	35271	2038	24	0	52553	26	1
Male	8522	2134	48	3	12239	2030	21	0	3028	2119	51	5	12877	2040	25	0	22133	28	1
Female	6883	2149	55	5	18344	2034	21	0	5140	2101	46	2	22368	2037	23	0	30379	24	1
No Information Provided	20	2187	55	15	23	2067	30	0	12	2189	83	8	26	2020	15	0	41	27	0
Native American	41	2198	61	7	82	2069	35	2	19	2200	74	11	80	2074	39	0	146	42	2
Asian	369	2131	53	5	405	2058	28	1	183	2132	54	5	652	2055	29	1	965	33	3
African American	2767	2133	49	2	7600	2022	17	0	1538	2089	42	1	8114	2029	20	0	11488	19	0
Hispanic	7808	2111	42	2	14617	2026	19	0	4553	2087	42	1	18535	2028	19	0	25364	20	0
White	4327	2201	68	8	7736	2053	29	1	1808	2172	65	9	7717	2068	37	0	14348	40	3
No Information Provided	113	2162	60	6	166	2043	25	1	79	2135	58	8	173	2035	23	1	242	23	1
Economically Disadvantaged	8523	2112	42	1	15975	2023	17	0	4900	2085	41	1	19527	2026	19	0	27144	20	0
<i>Yes</i>	8523	2112	42	1	15975	2023	17	0	4900	2085	41	1	19527	2026	19	0	27144	20	0
<i>No</i>	6763	2178	62	6	14424	2043	25	1	3180	2142	57	6	15532	2052	30	0	25111	32	2
<i>No Information Provided</i>	139	2166	63	6	207	2043	26	0	100	2136	61	6	212	2034	24	1	298	23	0
Title I, Part A	7761	2121	45	2	14664	2027	19	0	4135	2089	42	1	17557	2031	20	0	24960	21	1
<i>Participants</i>	7761	2121	45	2	14664	2027	19	0	4135	2089	42	1	17557	2031	20	0	24960	21	1
<i>Nonparticipants</i>	7529	2161	57	5	15735	2037	23	0	3948	2127	54	5	17500	2045	27	0	27298	30	2
<i>No Information Provided</i>	135	2157	59	5	207	2042	23	1	97	2133	55	8	214	2032	22	1	295	21	0
Migrant	311	2074	31	1	495	2021	16	0	197	2075	35	0	658	2017	16	0	866	16	0
<i>Yes</i>	311	2074	31	1	495	2021	16	0	197	2075	35	0	658	2017	16	0	866	16	0
<i>No</i>	14972	2142	51	4	29908	2033	21	0	7884	2108	48	3	34406	2038	24	0	51392	26	1
<i>No Information Provided</i>	142	2162	61	5	203	2044	24	1	99	2137	59	7	207	2037	24	1	295	22	0
LEP	2994	2052	20	0	2803	2000	10	0	1563	2051	25	0	3547	1993	9	0	4678	9	0
<i>Current LEP</i>	2994	2052	20	0	2803	2000	10	0	1563	2051	25	0	3547	1993	9	0	4678	9	0
<i>Non-LEP (Monitored 1st Year)</i>	167	2110	46	0	246	2027	16	0	106	2099	47	2	373	2023	17	0	468	19	0
<i>Non-LEP (Monitored 2nd Year)</i>	188	2104	42	0	279	2023	15	0	99	2072	32	0	389	2017	12	0	518	14	0
<i>Other Non-LEP</i>	11934	2164	59	4	27064	2036	22	0	6307	2122	53	4	30741	2043	26	0	46579	28	1
<i>No Information Provided</i>	142	2159	61	6	214	2037	22	1	105	2130	59	7	221	2031	23	1	310	22	0
Bilingual	8	2118	50	0	8	2104	50	0	3	---	---	---	12	2053	33	0	13	31	0
<i>Participants</i>	8	2118	50	0	8	2104	50	0	3	---	---	---	12	2053	33	0	13	31	0
<i>Nonparticipants</i>	15272	2141	51	3	30385	2032	21	0	8069	2108	48	3	35039	2038	24	0	52233	26	1
<i>No Information Provided</i>	145	2156	59	5	213	2040	23	1	108	2127	57	6	220	2032	23	1	307	22	0
ESL	2809	2051	20	0	2541	1999	10	0	1431	2048	24	0	3242	1993	9	0	4248	9	0
<i>Participants</i>	2809	2051	20	0	2541	1999	10	0	1431	2048	24	0	3242	1993	9	0	4248	9	0
<i>Nonparticipants</i>	12474	2161	58	4	27855	2035	22	0	6647	2120	52	4	31815	2042	25	0	48005	27	1
<i>No Information Provided</i>	142	2158	60	6	210	2041	24	1	102	2130	60	7	214	2033	23	1	300	22	0
Special Education	1522	2101	37	1	2218	2009	15	0	931	2077	36	1	2424	2018	17	0	3917	18	0
<i>Yes</i>	1522	2101	37	1	2218	2009	15	0	931	2077	36	1	2424	2018	17	0	3917	18	0
<i>No</i>	13763	2145	53	4	28183	2034	22	0	7150	2111	49	3	32640	2039	24	0	48342	26	1
<i>No Information Provided</i>	140	2166	61	5	205	2044	23	1	99	2139	59	7	207	2038	25	1	294	23	0
Gifted/Talented	453	2298	88	26	459	2122	52	7	171	2326	92	34	624	2102	50	3	1285	63	13
<i>Participants</i>	453	2298	88	26	459	2122	52	7	171	2326	92	34	624	2102	50	3	1285	63	13
<i>Nonparticipants</i>	14828	2136	50	3	29938	2031	21	0	7901	2103	47	2	34430	2037	23	0	50964	25	1
<i>No Information Provided</i>	144	2167	61	6	209	2046	24	1	108	2138	58	7	217	2036	24	1	304	22	0
At-Risk	12354	2121	46	1	26284	2027	19	0	6805	2090	43	1	30117	2032	21	0	43443	21	0
<i>Yes</i>	12354	2121	46	1	26284	2027	19	0	6805	2090	43	1	30117	2032	21	0	43443	21	0
<i>No</i>	2931	2226	73	13	4113	2069	35	2	1272	2203	71	13	4942	2072	39	1	8814	47	5
<i>No Information Provided</i>	140	2167	62	6	209	2043	23	1	103	2137	57	8	212	2034	23	1	296	21	0
Career/Technology Education	10553	2139	51	3	21444	2032	21	0	5581	2102	46	2	24985	2038	24	0	37088	26	1
<i>Participants</i>	10553	2139	51	3	21444	2032	21	0	5581	2102	46	2	24985	2038	24	0	37088	26	1
<i>Nonparticipants</i>	4726	2145	51	4	8947	2033	21	0	2494	2121	51	4	10064	2038	23	0	15159	26	2
<i>No Information Provided</i>	146	2167	62	7	215	2045	24	1	105	2142	59	8	222	2038	24	2	306	22	0

"---" = No Data Reported For Fewer Than Five Students



All Students

	Number of Students Tested	Average Scale Score	Percent Met Standard	Percent Commented Performance	Percent Met THCEB Standard for Higher Education Readiness	Results for Each Objective										All Tests Taken							
						1		2		3		6		Number of Students Tested	Percent Met Standard	Percent Commented Performance							
						Basic Understanding	Literary Elements and Techniques	Short Answer Rating (Literary Selection)	Analysis and Evaluation	Short Answer Rating (Expository Selection)	Short Answer Rating (Connecting Selections)	Revising and Editing											
						Number of Items Tested in Each Objective																	
						8	8	3	12	3	3	20											
Average Number of Items Correct / Average Percent of Items Correct																							
All Students	15425	2141	51	4	8	6.3	79	6.3	79	1.0	33	9.0	75	1.0	32	0.7	22	13.9	70	52553	26	1	
Male	8522	2134	48	3	6	6.4	79	6.3	79	1.0	33	9.0	75	0.9	31	0.6	21	13.8	69	22133	28	1	
Female	6883	2149	55	5	10	6.3	78	6.3	79	1.1	35	8.9	75	1.0	34	0.7	22	14.1	70	30379	24	1	
No Information Provided	20	2187	55	15	25	6.5	81	7.0	87	1.0	32	9.4	78	1.0	32	0.8	27	15.3	77	41	27	0	
Native American	41	2198	61	7	17	7.1	89	7.1	88	1.1	37	9.8	82	1.2	41	1.0	34	15.6	78	146	42	2	
Asian	369	2131	53	5	8	6.1	76	6.0	76	1.0	34	8.1	67	1.0	32	0.7	23	13.8	69	965	33	3	
African American	2767	2133	49	2	5	6.2	78	6.3	79	1.0	32	9.0	75	0.9	30	0.6	19	14.0	70	11488	19	0	
Hispanic	7808	2111	42	2	4	6.0	76	6.0	76	1.0	33	8.5	70	0.9	31	0.6	19	12.8	64	25364	20	0	
White	4327	2201	68	8	15	6.9	86	6.9	86	1.1	36	10.0	83	1.1	37	0.8	28	15.8	79	14348	40	3	
No Information Provided	113	2162	60	6	12	6.3	79	6.5	81	1.1	36	9.0	75	1.0	33	0.7	24	14.2	71	242	23	1	
Economically Disadvantaged																							
Free Meals	6412	2109	41	1	4	6.0	75	6.0	75	1.0	32	8.4	70	0.9	29	0.5	18	12.9	65	20097	19	0	
Reduced Meals	1157	2138	51	2	5	6.4	79	6.4	80	1.0	34	9.0	75	1.0	32	0.7	22	13.9	69	4230	24	1	
Other	954	2100	38	1	3	5.9	74	5.9	74	1.0	33	8.1	68	0.9	30	0.5	17	12.4	62	2817	19	0	
No Information Provided	6763	2178	62	6	12	6.6	83	6.7	84	1.1	36	9.6	80	1.1	36	0.8	26	15.1	75	25111	32	2	
No Information Provided	139	2166	63	6	12	6.3	79	6.5	82	1.1	35	9.2	77	1.0	34	0.7	25	14.4	72	298	23	0	
Title I, Part A Schoolwide Program Participants	7595	2122	46	2	5	6.1	77	6.2	77	1.0	33	8.6	72	0.9	30	0.6	19	13.3	66	24451	22	1	
Targeted Assistance Participants	143	2112	41	1	1	6.1	76	6.2	78	0.8	28	8.8	73	0.8	27	0.5	16	13.3	67	420	15	0	
Nonparticipants (Previous Participants)	19	2068	26	0	5	6.2	78	6.1	76	0.9	30	8.2	68	0.8	26	0.5	16	10.5	53	38	16	0	
Homeless Participants at Non-Title I Schools	23	2159	52	9	13	6.6	82	6.0	76	1.0	32	9.0	75	0.9	30	0.6	19	14.7	74	89	24	2	
Nonparticipants (Not Previous Participants)	7510	2162	57	5	11	6.5	81	6.5	82	1.0	35	9.3	78	1.0	35	0.7	24	14.6	73	27260	30	2	
No Information Provided	135	2157	59	5	10	6.2	78	6.4	80	1.1	36	9.1	76	1.0	33	0.7	24	14.1	71	295	21	0	
Migrant																							
Yes	311	2074	31	1	2	5.7	71	5.5	68	1.0	32	7.5	63	0.8	27	0.5	15	11.6	58	866	16	0	
No	14972	2142	51	4	8	6.3	79	6.4	79	1.0	34	9.0	75	1.0	33	0.7	22	14.0	70	51392	26	1	
No Information Provided	142	2162	61	5	10	6.3	78	6.5	82	1.0	35	9.2	77	1.0	34	0.7	24	14.4	72	295	22	0	
Limited English Proficient																							
Current LEP	2994	2052	20	0	1	5.6	70	5.2	65	0.9	29	7.3	61	0.7	24	0.4	14	10.5	53	4678	9	0	
Non-LEP (Monitored 1st Year)	167	2110	46	0	2	6.0	75	6.1	77	1.1	37	8.4	70	1.0	34	0.5	18	12.8	64	468	19	0	
Non-LEP (Monitored 2nd Year)	188	2104	42	0	1	6.1	76	6.2	78	1.1	38	8.3	69	1.0	34	0.6	20	12.5	63	518	14	0	
Other Non-LEP	11934	2164	59	4	10	6.5	81	6.6	83	1.1	35	9.4	78	1.0	34	0.7	24	14.8	74	46579	28	1	
No Information Provided	142	2159	61	6	11	6.2	77	6.4	80	1.0	35	9.1	76	1.0	34	0.7	25	14.2	71	310	22	0	
Bilingual/ESL Program																							
Bilingual	8	2118	50	0	25	6.5	81	5.5	69	1.1	38	8.8	73	0.8	25	0.6	21	12.3	61	13	31	0	
ESL	2809	2051	20	0	1	5.6	70	5.2	65	0.9	29	7.2	60	0.7	25	0.4	14	10.5	52	4248	9	0	
Neither	12463	2161	58	4	9	6.5	81	6.6	82	1.0	35	9.4	78	1.0	34	0.7	23	14.7	74	47983	27	1	
No Information Provided	138	2158	61	5	10	6.2	78	6.5	81	1.1	35	9.1	76	1.0	34	0.7	25	14.3	71	293	22	0	
Special Education																							
Yes	1522	2101	37	1	3	6.0	75	6.1	76	0.9	31	8.5	71	0.8	28	0.5	18	12.5	63	3917	18	0	
No	13763	2145	53	4	8	6.3	79	6.4	80	1.0	34	9.0	75	1.0	33	0.7	22	14.1	70	48342	26	1	
No Information Provided	140	2166	61	5	11	6.3	78	6.5	81	1.1	35	9.2	77	1.0	35	0.8	25	14.5	72	294	23	0	
Gifted/Talented																							
Participants	453	2298	88	26	33	7.4	92	7.4	93	1.2	39	10.9	91	1.3	42	1.0	35	18.0	90	1285	63	13	
Nonparticipants	14828	2136	50	3	7	6.3	79	6.3	79	1.0	34	8.9	74	1.0	32	0.6	21	13.8	69	50964	25	1	
No Information Provided	144	2167	61	6	12	6.3	78	6.5	81	1.1	36	9.2	77	1.0	35	0.8	25	14.4	72	304	22	0	
At-Risk																							
Yes	12354	2121	46	1	5	6.2	77	6.2	77	1.0	33	8.7	72	0.9	31	0.6	20	13.3	67	43443	21	0	
No	2931	2226	73	13	19	7.0	87	7.0	88	1.1	37	10.2	85	1.2	40	0.9	30	16.4	82	8814	47	5	
No Information Provided	140	2167	62	6	12	6.3	79	6.5	81	1.1	35	9.2	76	1.0	34	0.8	25	14.4	72	296	21	0	
Career/Technology Education																							
Elective	3994	2136	50	3	7	6.3	78	6.3	78	1.0	34	8.9	74	1.0	32	0.6	21	13.8	69	13268	25	1	
Coherent Sequence	4205	2140	51	3	7	6.3	79	6.4	80	1.0	34	9.0	75	1.0	32	0.6	22	13.9	70	14817	26	1	
Tech Prep	2354	2142	52	3	8	6.3	79	6.3	79	1.0	35	9.0	75	1.0	33	0.7	23	14.0	70	9003	26	1	
No	4726	2145	51	4	9	6.4	80	6.4	80	1.0	34	9.0	75	1.0	32	0.7	22	14.0	70	15159	26	2	
No Information Provided	146	2167	62	7	12	6.3	79	6.4	80	1.1	36	9.2	76	1.0	34	0.7	25	14.4	72	306	22	0	

* Written Composition information can be found on the Summary Report and Written Performance Summary Report.

All Students

	Number of Students Tested	Average Scale Score	Percent Met Standard	Percent Commented Performance	Percent Met THCB Standard for Higher Education Readiness	Results for Each Objective										All Tests Taken													
						1	2	3	4	5	6	7	8	9	10	Number of Students Tested	Percent Met Standard	Percent Commented Performance											
						Functional Relationships	Properties and Attributes of Functions	Linear Functions	Linear Equations and Inequalities	Quadratic and Other Nonlinear Functions	Geometric Relationships and Spatial Reasoning	Two- and Three-Dimensional Representations	Measurement and Similarity	Percents/Proportions/Probability/Statistics	Mathematical Processes and Tools														
						Number of Items Tested in Each Objective																							
						5	5	5	5	5	7	7	7	5	9														
Average Number of Items Correct / Average Percent of Items Correct																													
All Students	30606	2032	21	0	3	3.0	59	2.7	55	2.2	45	2.7	54	2.4	48	2.2	32	3.5	50	2.9	41	2.1	42	3.3	37	52553	26	1	
Male	12239	2030	21	0	3	3.0	59	2.7	53	2.1	43	2.5	50	2.3	46	2.2	33	3.5	50	2.9	41	2.2	43	3.4	38	22133	28	1	
Female	18344	2034	21	0	3	3.0	59	2.8	56	2.3	46	2.8	56	2.5	50	2.2	32	3.5	50	2.8	41	2.0	41	3.2	36	30379	24	1	
No Information Provided	23	2067	30	0	17	2.9	58	3.0	59	2.5	50	2.8	57	2.7	53	3.1	45	3.6	51	3.2	45	2.2	43	3.8	43	41	27	0	
Native American	82	2069	35	2	7	3.2	65	3.0	60	2.6	51	3.1	61	2.5	50	2.5	36	3.7	53	3.1	44	2.3	45	3.9	43	146	42	2	
Asian	405	2058	28	1	7	3.1	61	2.9	57	2.5	50	2.8	56	2.6	53	2.6	37	3.8	55	3.1	44	2.1	43	3.5	39	965	33	3	
African American	7600	2022	17	0	1	2.9	58	2.7	55	2.2	44	2.6	52	2.5	49	2.0	29	3.3	47	2.7	39	2.1	41	3.1	35	11488	19	0	
Hispanic	14617	2026	19	0	2	2.9	59	2.7	53	2.2	43	2.6	52	2.3	47	2.2	32	3.5	50	2.8	40	2.0	39	3.2	36	25364	20	0	
White	7736	2053	29	1	6	3.0	60	2.9	58	2.3	46	2.9	57	2.5	50	2.5	36	3.6	52	3.1	44	2.3	47	3.7	41	14348	40	3	
No Information Provided	166	2043	25	1	7	2.9	59	2.8	56	2.3	47	2.8	56	2.4	48	2.5	36	3.5	50	2.9	42	2.1	42	3.5	39	242	23	1	
Economically Disadvantaged																													
<i>Free Meals</i>	11931	2020	17	0	1	2.9	58	2.6	53	2.1	43	2.6	51	2.3	47	2.1	31	3.4	49	2.8	39	2.0	39	3.1	35	20097	19	0	
<i>Reduced Meals</i>	2408	2031	20	0	3	3.0	59	2.7	54	2.2	45	2.7	54	2.4	48	2.2	32	3.5	50	2.8	41	2.1	42	3.3	37	4230	24	1	
<i>Other</i>	1636	2026	19	0	2	3.0	60	2.7	54	2.2	45	2.6	52	2.4	47	2.2	31	3.6	51	2.7	39	2.0	40	3.2	35	2817	19	0	
<i>No Information Provided</i>	14424	2043	25	1	4	3.0	60	2.8	57	2.3	46	2.8	56	2.5	50	2.3	34	3.6	51	2.9	42	2.2	44	3.5	39	25111	32	2	
Title I, Part A Schoolwide Program Participants	14293	2028	19	0	2	3.0	59	2.7	54	2.2	44	2.6	53	2.4	48	2.2	31	3.5	50	2.8	40	2.0	40	3.2	36	24451	23	1	
<i>Targeted Assistance Participants</i>	307	2022	17	0	3	3.0	60	2.7	53	2.2	44	2.6	53	2.3	47	2.2	31	3.3	47	2.7	39	1.9	39	3.1	34	420	15	0	
<i>Nonparticipants (Previous Participants)</i>	25	1996	8	0	0	2.8	55	2.2	45	2.0	39	2.2	45	2.1	42	1.8	26	3.3	47	2.7	38	1.9	38	2.8	31	38	16	0	
<i>Homeless Participants at Non-Title I Schools</i>	64	2019	22	0	0	2.7	54	2.6	52	2.1	42	2.5	51	2.5	50	2.1	29	3.1	45	2.7	39	2.2	43	3.3	36	89	24	2	
<i>Nonparticipants (Not Previous Participants)</i>	15710	2037	23	0	4	3.0	59	2.8	55	2.3	45	2.7	55	2.4	48	2.3	33	3.5	50	2.9	42	2.2	43	3.4	38	27260	30	2	
<i>No Information Provided</i>	207	2042	23	1	7	2.9	58	2.8	56	2.3	45	2.8	55	2.4	48	2.5	36	3.5	50	2.9	41	2.1	42	3.6	40	295	21	0	
Migrant																													
<i>Yes</i>	495	2021	16	0	1	3.0	59	2.5	51	2.1	43	2.5	50	2.2	45	2.2	32	3.4	49	2.8	40	1.9	38	3.2	35	866	16	0	
<i>No</i>	29908	2033	21	0	3	3.0	59	2.7	55	2.2	45	2.7	54	2.4	48	2.2	32	3.5	50	2.9	41	2.1	42	3.3	37	51392	26	1	
<i>No Information Provided</i>	203	2044	24	1	7	2.9	58	2.8	56	2.3	46	2.8	55	2.4	48	2.5	36	3.5	50	2.9	42	2.1	42	3.6	40	295	22	0	
Limited English Proficient																													
<i>Current LEP</i>	2803	2000	10	0	1	2.8	55	2.4	48	2.0	41	2.1	43	2.1	42	2.1	30	3.3	47	2.7	38	1.7	35	2.9	32	4678	9	0	
<i>Non-LEP (Monitored 1st Year)</i>	246	2027	16	0	3	3.0	60	2.5	50	2.3	45	2.5	50	2.5	49	2.2	31	3.5	50	2.8	39	1.9	38	3.4	38	468	19	0	
<i>Non-LEP (Monitored 2nd Year)</i>	279	2023	15	0	1	3.0	60	2.7	53	2.2	44	2.6	52	2.4	48	2.0	29	3.5	50	2.8	39	1.9	37	3.0	34	518	14	0	
<i>Other Non-LEP</i>	27064	2036	22	0	3	3.0	60	2.8	56	2.2	45	2.7	55	2.4	49	2.3	32	3.5	50	2.9	41	2.1	43	3.4	37	46579	28	1	
<i>No Information Provided</i>	214	2037	22	1	7	2.9	57	2.7	55	2.3	45	2.7	55	2.4	47	2.5	35	3.5	50	2.9	41	2.1	42	3.5	39	310	22	0	
Bilingual/ESL Program																													
<i>Bilingual</i>	8	2104	50	0	25	3.3	65	2.5	50	3.3	65	3.0	60	3.0	60	3.6	52	4.1	59	3.5	50	2.3	45	4.3	47	13	31	0	
<i>ESL</i>	2541	1999	10	0	1	2.8	55	2.4	48	2.0	41	2.1	43	2.1	42	2.1	30	3.3	47	2.6	38	1.7	34	2.9	32	4248	9	0	
<i>Neither</i>	27842	2035	22	0	3	3.0	60	2.8	55	2.2	45	2.7	55	2.4	49	2.3	32	3.5	50	2.9	41	2.1	43	3.3	37	47983	27	1	
<i>No Information Provided</i>	204	2041	25	1	7	2.9	58	2.8	56	2.3	46	2.8	55	2.4	48	2.5	36	3.5	50	2.9	41	2.1	42	3.5	39	293	22	0	
Special Education																													
<i>Yes</i>	2218	2009	15	0	1	2.8	55	2.5	50	2.0	41	2.3	47	2.2	43	2.1	30	3.3	47	2.8	40	1.9	39	3.1	34	3917	18	0	
<i>No</i>	28183	2034	22	0	3	3.0	59	2.8	55	2.2	45	2.7	54	2.4	49	2.3	32	3.5	50	2.9	41	2.1	42	3.3	37	48342	26	1	
<i>No Information Provided</i>	205	2044	23	1	7	2.9	58	2.8	56	2.3	45	2.8	55	2.4	48	2.5	36	3.5	50	2.9	42	2.1	43	3.6	40	294	23	0	
Gifted/Talented																													
<i>Participants</i>	459	2122	52	7	19	3.5	69	3.3	67	2.8	56	3.4	69	3.1	62	3.0	43	4.2	60	3.5	50	2.7	54	4.4	49	1285	63	13	
<i>Nonparticipants</i>	29938	2031	21	0	3	3.0	59	2.7	55	2.2	44	2.7	53	2.4	48	2.2	32	3.5	50	2.8	41	2.1	42	3.3	37	50964	25	1	
<i>No Information Provided</i>	209	2046	24	1	8	2.9	58	2.8	57	2.3	46	2.8	56	2.4	48	2.5	36	3.5	51	2.9	42	2.1	43	3.6	40	304	22	0	
At-Risk																													
<i>Yes</i>	26284	2027	19	0	2	2.9	59	2.7	54	2.2	44	2.6	53	2.4	48	2.2	31	3.5	49	2.8	40	2.0	41	3.2	36	43443	21	0	
<i>No</i>	4113	2069	35	2	10	3.1	63	3.0	59	2.5	50	3.0	60	2.6	53	2.6	38	3.8	54	3.2	45	2.4	48	3.8	42	8814	47	5	
<i>No Information Provided</i>	209	2043	23	1	7	2.9	57	2.8	56	2.3	45	2.8	55	2.4	48	2.5	36	3.5	50	3.									



All Students

	Number of Students Tested	Average Scale Score	Percent Met Standard	Percent Commented Performance	Results for Each Objective										All Tests Taken		
					1		2		3		4		5		Number of Students Tested	Percent Met Standard	Percent Commented Performance
					Issues and Events in U.S. History		Geographic Influences on History		Economic and Social Influences on History		Political Influences on History		Critical-Thinking Skills				
					Number of Items Tested in Each Objective												
					13		9		13		9		11				
Average Number of Items Correct / Average Percent of Items Correct																	
All Students	8180	2108	48	3	5.8	44	4.8	53	6.7	52	4.7	52	6.3	57	52553	26	1
Male	3028	2119	51	5	5.1	47	4.9	55	6.9	53	4.7	53	6.4	59	22133	28	1
Female	5140	2101	46	2	5.6	43	4.7	52	6.6	51	4.7	52	6.2	56	30379	24	1
No Information Provided	12	2189	83	8	7.8	60	6.3	69	8.6	66	5.1	56	7.6	69	41	27	0
Native American	19	2200	74	11	6.3	49	6.1	68	8.8	68	6.0	67	7.5	68	146	42	2
Asian	183	2132	54	5	6.6	50	5.1	57	7.0	54	4.7	52	6.5	59	965	33	3
African American	1538	2089	42	1	5.3	41	4.4	49	6.8	52	4.5	49	5.9	54	11488	19	0
Hispanic	4553	2087	42	1	5.5	42	4.5	50	6.1	47	4.6	51	6.0	54	25364	20	0
White	1808	2172	65	9	6.8	52	5.8	64	8.0	62	5.3	59	7.3	66	14348	40	3
No Information Provided	79	2135	58	8	6.7	52	5.0	55	7.1	55	4.9	55	6.6	60	242	23	1
Economically Disadvantaged	3675	2083	41	1	5.4	41	4.4	49	6.1	47	4.5	49	5.9	54	20097	19	0
Free Meals	651	2097	42	3	5.7	44	4.5	50	6.6	50	4.6	52	6.0	55	4230	24	1
Reduced Meals	574	2085	41	1	5.5	43	4.4	49	6.0	46	4.7	53	5.8	52	2817	19	0
Other	3180	2142	57	6	6.3	48	5.3	59	7.5	58	5.0	56	6.8	62	25111	32	2
No Information Provided	100	2136	61	6	6.5	50	5.0	56	7.4	57	5.0	55	6.7	61	298	23	0
Title I, Part A Schoolwide Program Participants	4044	2090	42	1	5.5	42	4.5	50	6.2	48	4.6	51	6.0	54	24451	22	1
Targeted Assistance Participants	73	2053	23	0	4.9	38	3.8	42	5.5	42	4.1	46	5.4	49	420	15	0
Nonparticipants (Previous Participants)	13	2096	38	8	5.8	45	4.5	50	5.9	46	4.8	53	6.2	56	38	16	0
Homeless Participants at Non-Title I Schools	18	2085	50	0	4.6	35	5.0	56	6.7	52	4.1	46	6.1	56	89	24	2
Nonparticipants (Not Previous Participants)	3935	2127	54	5	6.0	46	5.1	56	7.2	55	4.8	54	6.6	60	27260	30	2
No Information Provided	97	2133	55	8	6.6	51	4.8	53	7.2	55	4.9	55	6.6	60	295	21	0
Migrant	197	2075	35	0	5.3	40	4.4	49	5.7	44	4.4	48	5.8	53	866	16	0
Yes	7884	2108	48	3	5.8	44	4.8	53	6.7	52	4.7	52	6.3	57	51392	26	1
No	99	2137	59	7	6.6	51	5.0	56	7.3	56	5.0	55	6.6	60	295	22	0
No Information Provided	1563	2051	25	0	5.2	40	3.8	43	5.1	40	4.2	47	5.1	46	4678	9	0
Limited English Proficient	106	2099	47	2	5.8	45	4.7	52	6.3	48	4.7	52	6.1	56	468	19	0
Current LEP	99	2072	32	0	5.1	39	4.0	45	5.9	46	4.6	52	5.5	50	518	14	0
Non-LEP (Monitored 1st Year)	6307	2122	53	4	5.9	45	5.0	56	7.1	55	4.8	54	6.6	60	46579	28	1
Non-LEP (Monitored 2nd Year)	105	2130	59	7	6.5	50	5.0	55	7.2	56	4.9	55	6.6	60	310	22	0
Other Non-LEP	3	---	---	---	---	---	---	---	---	---	---	---	---	---	13	31	0
No Information Provided	1431	2048	24	0	5.1	40	3.8	42	5.1	39	4.2	47	5.0	46	4248	9	0
Bilingual/ESL Program	6641	2120	52	4	5.9	45	5.0	55	7.0	54	4.8	53	6.5	59	47983	27	1
Bilingual	100	2130	60	7	6.6	50	5.0	55	7.2	56	4.9	55	6.6	60	293	22	0
ESL	931	2077	36	1	5.2	40	4.3	47	6.2	48	4.3	48	5.7	52	3917	18	0
Neither	7150	2111	49	3	5.8	45	4.8	54	6.8	52	4.8	53	6.3	58	48342	26	1
No Information Provided	99	2139	59	7	6.7	51	5.0	56	7.3	56	5.0	56	6.7	61	294	23	0
Special Education	171	2326	92	34	9.1	70	7.4	82	10.3	79	7.0	77	9.1	83	1285	63	13
Yes	7901	2103	47	2	5.7	44	4.7	52	6.6	51	4.7	52	6.2	56	50964	25	1
Participants	108	2138	58	7	6.6	51	5.0	55	7.3	56	5.0	55	6.7	61	304	22	0
Nonparticipants	6805	2090	43	1	5.5	42	4.5	50	6.4	49	4.5	50	6.0	55	43443	21	0
No	1272	2203	71	13	7.3	56	6.0	67	8.5	65	5.7	63	7.7	70	8814	47	5
Yes	103	2137	57	8	6.6	51	5.0	56	7.3	56	5.0	56	6.7	60	296	21	0
No Information Provided	2081	2104	45	3	5.7	44	4.7	52	6.6	51	4.6	51	6.2	56	13268	25	1
Career/Technology Education	2204	2103	47	2	5.7	44	4.7	52	6.6	51	4.7	52	6.2	56	14817	26	1
Elective	1296	2096	47	1	5.5	43	4.6	52	6.6	50	4.7	52	6.1	56	9003	26	1
Coherent Sequence	2494	2121	51	4	6.0	46	4.9	55	6.9	53	4.8	54	6.5	59	15159	26	2
Tech Prep	105	2142	59	8	6.7	51	5.0	55	7.3	56	5.1	56	6.7	61	306	22	0
No Information Provided																	

"---" = No Data Reported
For Fewer Than Five Students



All Students

	Number of Students Tested	Average Scale Score	Percent Met Standard	Percent Commended Performance	Results for Each Objective										All Tests Taken		
					1		2		3		4		5		Number of Students Tested	Percent Met Standard	Percent Commended Performance
					Nature of Science		Organization of Living Systems		Interdependence of Organisms and the Environment		Structures and Properties of Matter		Motion, Forces, and Energy				
					Number of Items Tested in Each Objective												
					17		8		8		11		11				
Average Number of Items Correct / Average Percent of Items Correct																	
All Students	35271	2038	24	0	7.8	46	3.3	41	4.3	54	4.4	40	4.9	44	52553	26	1
Male	12877	2040	25	0	7.9	46	3.2	40	4.3	53	4.4	40	5.2	47	22133	28	1
Female	22368	2037	23	0	7.8	46	3.3	41	4.3	54	4.5	41	4.7	43	30379	24	1
No Information Provided	26	2020	15	0	6.9	41	3.1	38	4.3	54	3.9	36	4.8	43	41	27	0
Native American	80	2074	39	0	8.8	52	3.8	47	4.7	58	5.2	47	5.4	49	146	42	2
Asian	652	2055	29	1	7.9	46	3.4	43	4.3	54	5.0	46	5.4	49	965	33	3
African American	8114	2029	20	0	7.5	44	3.2	41	4.2	53	4.5	41	4.5	41	11488	19	0
Hispanic	18535	2028	19	0	7.5	44	3.1	39	4.1	52	4.3	39	4.8	44	25364	20	0
White	7717	2068	37	0	8.8	52	3.7	46	4.7	59	4.8	44	5.4	49	14348	40	3
No Information Provided	173	2035	23	1	7.7	45	3.1	39	4.2	53	4.3	40	4.9	44	242	23	1
Economically Disadvantaged																	
Free Meals	14450	2024	18	0	7.4	44	3.1	39	4.1	51	4.3	39	4.7	43	20097	19	0
Reduced Meals	2941	2037	23	0	7.8	46	3.3	41	4.3	53	4.4	40	4.9	44	4230	24	1
Other	2136	2026	18	0	7.3	43	3.1	39	4.1	51	4.2	38	4.8	44	2817	19	0
No Information Provided	15532	2052	30	0	8.3	49	3.5	43	4.5	56	4.7	42	5.1	46	25111	32	2
No Information Provided	212	2034	24	1	7.6	45	3.2	40	4.2	52	4.3	39	4.9	44	298	23	0
Title I, Part A Schoolwide Program Participants	17211	2031	20	0	7.6	45	3.2	40	4.2	52	4.3	39	4.8	43	24451	22	1
Targeted Assistance Participants	292	2023	17	0	7.2	42	3.3	41	4.2	52	4.2	38	4.5	41	420	15	0
Nonparticipants (Previous Participants)	27	2033	22	0	8.1	48	3.4	42	4.2	53	4.3	39	4.2	38	38	16	0
Homeless Participants at Non-Title I Schools	54	2024	20	0	7.2	43	3.3	41	3.9	49	4.5	41	4.6	42	89	24	2
Nonparticipants (Not Previous Participants)	17473	2045	27	0	8.1	47	3.4	42	4.4	55	4.6	41	5.0	46	27260	30	2
No Information Provided	214	2032	22	1	7.6	45	3.1	39	4.1	52	4.3	39	4.8	44	295	21	0
Migrant																	
Yes	658	2017	16	0	7.2	42	2.9	36	4.0	50	4.0	37	4.7	43	866	16	0
No	34406	2038	24	0	7.8	46	3.3	41	4.3	54	4.5	41	4.9	45	51392	26	1
No Information Provided	207	2037	24	1	7.7	45	3.2	39	4.2	52	4.4	40	4.9	45	295	22	0
Limited English Proficient																	
Current LEP	3547	1993	9	0	6.3	37	2.6	33	3.5	44	3.8	35	4.4	40	4678	9	0
Non-LEP (Monitored 1st Year)	373	2023	17	0	7.2	42	3.0	37	3.9	49	4.3	39	4.8	44	468	19	0
Non-LEP (Monitored 2nd Year)	389	2017	12	0	7.1	42	2.8	35	3.9	49	4.2	38	4.7	43	518	14	0
Other Non-LEP	30741	2043	26	0	8.0	47	3.4	42	4.4	55	4.5	41	5.0	45	46579	28	1
No Information Provided	221	2031	23	1	7.5	44	3.2	40	4.2	52	4.3	39	4.9	44	310	22	0
Bilingual/ESL Program																	
Bilingual	12	2053	33	0	7.3	43	3.8	47	4.5	56	4.9	45	5.5	50	13	31	0
ESL	3242	1993	9	0	6.3	37	2.6	33	3.5	44	3.8	35	4.4	40	4248	9	0
Neither	31798	2042	25	0	8.0	47	3.3	42	4.4	55	4.5	41	4.9	45	47983	27	1
No Information Provided	210	2033	23	1	7.6	45	3.2	39	4.2	52	4.3	39	4.9	45	293	22	0
Special Education																	
Yes	2424	2018	17	0	7.2	43	3.0	38	4.0	50	4.1	37	4.6	42	3917	18	0
No	32640	2039	24	0	7.9	46	3.3	41	4.3	54	4.5	41	4.9	45	48342	26	1
No Information Provided	207	2038	25	1	7.8	46	3.2	40	4.2	53	4.4	40	4.9	45	294	23	0
Gifted/Talented																	
Participants	624	2102	50	3	9.6	56	4.1	51	5.1	64	5.3	49	5.9	54	1285	63	13
Nonparticipants	34430	2037	23	0	7.8	46	3.3	41	4.3	53	4.4	40	4.9	44	50964	25	1
No Information Provided	217	2036	24	1	7.7	45	3.1	39	4.2	53	4.3	40	4.9	45	304	22	0
At-Risk																	
Yes	30117	2032	21	0	7.7	45	3.2	40	4.2	53	4.4	40	4.8	44	43443	21	0
No	4942	2072	39	1	8.8	52	3.7	46	4.8	59	5.0	45	5.5	50	8814	47	5
No Information Provided	212	2034	23	1	7.7	45	3.1	39	4.2	52	4.3	39	4.9	44	296	21	0
Career/Technology Education																	
Elective	8925	2036	23	0	7.8	46	3.3	41	4.3	53	4.4	40	4.9	44	13268	25	1
Coherent Sequence	9890	2039	24	0	7.9	46	3.3	41	4.3	54	4.5	40	4.9	45	14817	26	1
Tech Prep	6170	2038	24	0	7.9	46	3.3	41	4.3	54	4.5	41	4.9	45	9003	26	1
No	10064	2038	23	0	7.8	46	3.3	41	4.3	54	4.5	41	4.9	44	15159	26	2
No Information Provided	222	2038	24	2	7.7	45	3.2	40	4.2	53	4.4	40	5.0	45	306	22	0

"---" = No Data Reported
For Fewer Than Five Students

Written Performance Summary Report

Report Date: AUGUST 2006
Date of Testing: JULY 2006

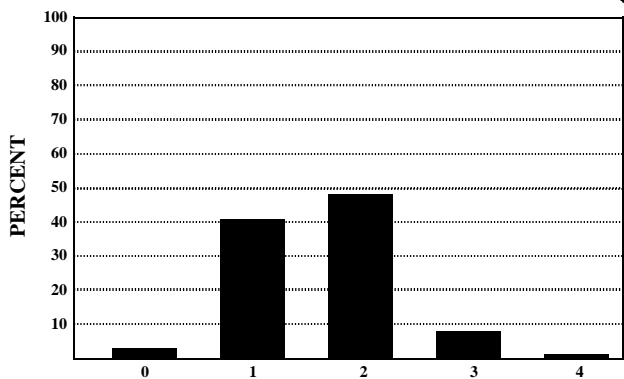
All Students

Number Tested: 15425

"---" = No Data Reported For
Fewer Than Five Students

Written Composition Summary

Written Composition Rating Summary



Rating	0	1	2	3	4
Number	405	6313	7428	1194	85
Percent	3	41	48	8	1

Analytic Information Summary

Analytic Category

Analytic Category	Written Composition	
	Rating of 0	Rating of 1
	Number of Papers	
1. Weak Focus and Coherence	10	1979
2. Weak or Illogical Organization	31	2883
3. Weak Development of Ideas	51	4955
4. Little or No Sense of Voice	1	69
5. Little or No Control of Conventions	125	4499
6. Off Topic Response	128	*
7. Indecipherable Response	3	*
8. Insufficient Response	97	*
9. No Writing Attempted	177	*

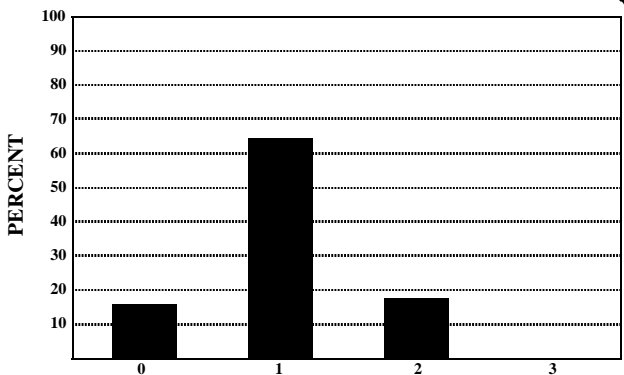
Papers receiving **Written Composition Ratings** of 0 or 1 were scored analytically.
For each category the number of papers having that deficiency is indicated. A student's paper may be listed in more than one category.
Papers receiving **Written Composition Ratings** of 2, 3, or 4 were not scored analytically.

* Analytic Category is not given for a rating of 1.

Short Answer Summary

Literary Selection

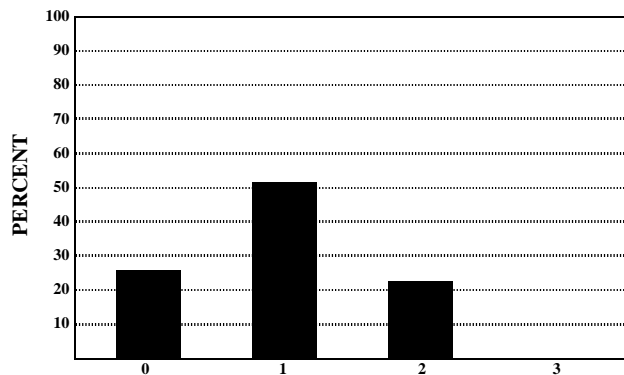
Objective 2



Rating	0	1	2	3
Number	2545	10056	2813	11
Percent	16	65	18	0

Expository Selection

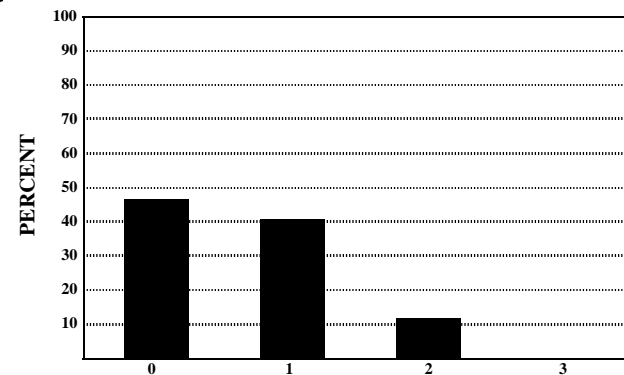
Objective 3



Rating	0	1	2	3
Number	3941	7975	3490	19
Percent	26	52	23	0

Connecting Selections

Objective 3



Rating	0	1	2	3
Number	7242	6331	1847	5
Percent	47	41	12	0



Summary Report - Test Performance

Report Date: AUGUST 2006
Date of Testing: JULY 2006

All Students

"---" = No Data Reported For
Fewer Than Five Students

English Language Arts

	Total Items Tested	Average Items Correct					
		Number	Percent				
1. Basic Understanding	8	5.9	74				
2. Literary Elements and Techniques	8	5.8	72				
<i>Short Answer Rating (Literary Selection)</i>	3	0.9	31				
3. Analysis and Evaluation	12	8.2	68				
<i>Short Answer Rating (Expository Selection)</i>	3	0.8	28				
<i>Short Answer Rating (Connecting Selections)</i>	3	0.5	17				
6. Revising and Editing	20	12.3	62				
4-5. Written Composition - Effectiveness/Command of Conventions							
<i>Rating</i>	0	1	2	3	4		
<i>Number</i>	121	1796	1263	180	9		
<i>Percent</i>	4	53	37	5	0		
Number of Students Tested		Average Scale Score		Met Standard		Commended Performance	
3369		2097		1271 38		69 2	

Mathematics

	Total Items Tested	Average Items Correct					
		Number	Percent				
1. Functional Relationships	5	2.9	57				
2. Properties and Attributes of Functions	5	2.6	52				
3. Linear Functions	5	2.1	42				
4. Linear Equations and Inequalities	5	2.5	50				
5. Quadratic and Other Nonlinear Functions	5	2.3	46				
6. Geometric Relationships and Spatial Reasoning ...	7	2.1	29				
7. Two- and Three-Dimensional Representations.	7	3.3	47				
8. Measurement and Similarity	7	2.7	39				
9. Percents/Proportions/Probability/Statistics	5	1.9	39				
10. Mathematical Processes and Tools	9	3.0	34				
Number of Students Tested		Average Scale Score		Met Standard		Commended Performance	
7591		2013		1631 21		22 0	

Social Studies

	Total Items Tested	Average Items Correct					
		Number	Percent				
1. Issues and Events in U.S. History	13	6.1	47				
2. Geographic Influences on History	9	4.9	55				
3. Economic and Social Influences on History	13	7.1	54				
4. Political Influences on History	9	4.9	54				
5. Critical-Thinking Skills	11	6.4	58				
Number of Students Tested		Average Scale Score		Met Standard		Commended Performance	
1480		2122		806 54		66 4	

Science

	Total Items Tested	Average Items Correct					
		Number	Percent				
1. Nature of Science	17	7.3	43				
2. Organization of Living Systems	8	3.0	37				
3. Interdependence of Organisms and the Environment	8	4.1	51				
4. Structures and Properties of Matter	11	4.2	38				
5. Motion, Forces, and Energy	11	4.5	41				
Number of Students Tested		Average Scale Score		Met Standard		Commended Performance	
9192		2019		2044 22		8 0	

Administration Summary

	Number	Percent
Number of Students Tested	13900	78
Students Absent from All Tests	290	2
Students Exempt from All Tests: ARD	210	1
Other Students Not Tested	3388	19
Total Answer Documents Submitted	17788	100

Met Standard Summary

	Number	Percent
Met STANDARD		
on All Tests Taken	2936	21
Did NOT Meet STANDARD on:		
<i>One Test Only</i>	7139	51
<i>Two Tests Only</i>	2941	21
<i>Three Tests Only</i>	677	5
<i>All Four Tests</i>	207	1

Commended Performance Summary

	Number	Percent
COMMENDED PERFORMANCE		
on All Tests Taken	44	0
Did NOT Achieve COMMENDED PERFORMANCE on:		
<i>One Test Only</i>	8595	62
<i>Two Tests Only</i>	3569	26
<i>Three Tests Only</i>	1034	7
<i>All Four Tests</i>	658	5

Summary Report - Group Performance

Report Date: AUGUST 2006
Date of Testing: JULY 2006

All Students

	English Language Arts				Mathematics				Social Studies				Science				All Tests Taken		
	Number of Students Tested	Average Scale Score	Percent Met Standard	Percent Com-mended	Number of Students Tested	Average Scale Score	Percent Met Standard	Percent Com-mended	Number of Students Tested	Average Scale Score	Percent Met Standard	Percent Com-mended	Number of Students Tested	Average Scale Score	Percent Met Standard	Percent Com-mended	Number of Students Tested	Percent Met Standard	Percent Com-mended
All Students	3369	2097	38	2	7591	2013	21	0	1480	2122	54	4	9192	2019	22	0	13900	21	0
Male	1790	2092	36	1	2964	2016	23	0	543	2159	63	8	3106	2024	24	0	5440	23	0
Female	1569	2103	39	3	4609	2011	20	0	927	2100	49	2	6068	2017	21	0	8430	20	0
No Information Provided	10	2115	60	10	18	2068	39	0	10	2162	60	20	18	2074	44	0	30	37	0
Native American	11	2128	64	0	22	2034	32	0	5	2132	80	0	21	2043	24	0	34	29	0
Asian	110	2076	28	4	124	2020	29	1	39	2132	56	5	173	2018	24	0	268	23	1
African American	468	2103	43	1	1994	2003	19	0	275	2107	48	5	2053	2015	20	0	3153	19	0
Hispanic	2079	2065	27	1	3826	2006	19	0	794	2091	47	1	5398	2009	18	0	7734	17	0
White	616	2197	68	7	1503	2040	29	1	313	2201	74	11	1396	2062	38	0	2500	34	1
No Information Provided	85	2143	56	7	122	2040	30	2	54	2181	74	11	151	2045	41	1	211	30	0
Economically Disadvantaged	2082	2069	29	0	4188	2005	19	0	837	2088	45	3	5658	2010	18	0	8185	18	0
<i>Yes</i>	1190	2143	52	4	3240	2023	25	0	579	2164	66	6	3348	2033	28	0	5445	26	1
<i>No</i>	97	2145	55	6	163	2033	26	1	64	2178	73	11	186	2042	40	1	270	28	0
<i>No Information Provided</i>	1815	2075	32	0	3777	2010	20	0	713	2106	50	3	4941	2014	20	0	7265	19	0
Title I, Part A	1444	2121	44	4	3646	2016	23	0	697	2133	57	5	4054	2025	25	0	6359	23	1
<i>Participants</i>	110	2135	51	5	168	2031	26	1	70	2181	74	11	197	2041	38	1	276	25	0
<i>Nonparticipants</i>	122	2061	30	1	190	2000	14	0	41	2105	54	2	286	2000	15	0	399	14	0
Migrant	3148	2097	38	2	7242	2013	22	0	1376	2120	54	4	8717	2020	22	0	13231	21	0
<i>Yes</i>	99	2140	55	6	159	2031	26	1	63	2172	70	11	189	2038	38	1	270	27	0
<i>No</i>	1216	2031	16	0	972	1988	13	0	277	2036	28	0	1491	1988	11	0	2341	11	0
LEP	80	2070	29	0	118	2009	17	1	22	2075	41	0	181	1994	13	0	255	14	0
<i>Current LEP</i>	37	2062	24	0	77	2007	16	0	8	2037	38	0	107	2012	17	0	156	17	0
<i>Non-LEP (Monitored 1st Year)</i>	1920	2138	52	3	6247	2016	23	0	1099	2141	60	5	7198	2026	24	0	10850	23	0
<i>Non-LEP (Monitored 2nd Year)</i>	116	2136	53	5	177	2035	27	1	74	2177	73	11	215	2039	36	0	298	26	0
<i>Other Non-LEP</i>	12	2058	17	0	9	2035	33	0	7	2182	71	14	12	2011	17	0	14	0	0
Bilingual	3253	2096	37	2	7417	2013	21	0	1405	2119	54	4	8986	2019	22	0	13607	21	0
<i>Participants</i>	104	2136	53	6	165	2030	25	1	68	2171	71	10	194	2038	38	1	279	27	0
<i>Nonparticipants</i>	1205	2030	15	0	920	1988	13	0	271	2044	29	0	1427	1989	12	0	2234	11	0
ESL	2052	2135	50	3	6496	2016	23	0	1132	2137	60	5	7564	2025	24	0	11381	23	0
<i>Participants</i>	112	2133	51	5	175	2034	26	1	77	2167	69	10	201	2040	38	0	285	25	0
<i>Nonparticipants</i>	140	2105	41	4	230	2016	21	1	104	2102	49	4	271	2029	26	1	427	24	0
Special Education	3117	2095	37	2	7182	2012	21	0	1300	2121	54	4	8713	2019	22	0	13180	21	0
<i>Yes</i>	112	2133	51	5	179	2034	26	1	76	2170	71	11	208	2041	38	0	293	26	0
<i>No</i>	37	2316	89	32	46	2125	57	9	17	2318	94	35	52	2098	40	4	97	55	14
Gifted/Talented	3217	2093	37	2	7361	2012	21	0	1385	2117	53	4	8932	2018	22	0	13510	21	0
<i>Participants</i>	115	2131	50	5	184	2032	23	1	78	2169	72	10	208	2040	37	0	293	24	0
<i>Nonparticipants</i>	2759	2082	33	1	6443	2010	20	0	1181	2107	51	3	7894	2016	21	0	11822	19	0
At-Risk	501	2169	59	7	973	2031	28	1	224	2179	66	9	1094	2040	31	0	1797	32	2
<i>Yes</i>	109	2140	52	6	175	2036	27	1	75	2182	75	11	204	2042	38	0	281	26	0
<i>No</i>	2032	2092	37	2	4857	2013	21	0	890	2115	53	3	5974	2017	21	0	9040	21	0
Career/Technology Education	1218	2102	38	2	2541	2012	22	0	510	2126	54	5	2997	2022	24	0	4550	22	0
<i>Participants</i>	119	2132	50	5	193	2032	25	1	80	2170	71	10	221	2039	37	0	310	25	0
<i>Nonparticipants</i>																			
<i>No Information Provided</i>																			

"---" = No Data Reported For Fewer Than Five Students



All Students

	Number of Students Tested	Average Scale Score	Percent Met Standard	Percent Commented Performance	Percent Met THCEB Standard for Higher Education Readiness	Results for Each Objective										All Tests Taken							
						1		2		3		6				Number of Students Tested	Percent Met Standard	Percent Commented Performance					
						Basic Understanding	Literary Elements and Techniques	Short Answer Rating (Literary Selection)	Analysis and Evaluation	Short Answer Rating (Expository Selection)	Short Answer Rating (Connecting Selections)	Revising and Editing											
						Number of Items Tested in Each Objective																	
						8	8	3	12	3	3	20											
Average Number of Items Correct / Average Percent of Items Correct																							
All Students	3369	2097	38	2	5	5.9	74	5.8	72	0.9	31	8.2	68	0.8	28	0.5	17	12.3	62	13900	21	0	
Male	1790	2092	36	1	4	5.9	74	5.8	72	0.9	29	8.2	69	0.8	27	0.5	17	12.2	61	5440	23	0	
Female	1569	2103	39	3	7	5.9	74	5.8	72	1.0	32	8.2	68	0.9	29	0.5	17	12.5	62	8430	20	0	
No Information Provided	10	2115	60	10	10	5.9	74	6.3	79	1.1	37	8.4	70	1.0	33	0.7	23	12.9	65	30	37	0	
Native American	11	2128	64	0	9	6.2	77	6.3	78	0.7	24	9.3	77	0.7	24	0.4	12	13.5	68	34	29	0	
Asian	110	2076	28	4	5	5.6	70	5.1	64	0.9	32	7.1	59	0.7	25	0.6	18	12.0	60	268	23	1	
African American	468	2103	43	1	3	5.9	74	6.0	75	0.9	30	8.5	71	0.8	26	0.4	15	13.0	65	3153	19	0	
Hispanic	2079	2065	27	1	2	5.6	70	5.4	68	0.9	29	7.7	64	0.8	26	0.4	15	11.1	56	7734	17	0	
White	616	2197	68	7	15	6.9	86	6.8	85	1.1	36	9.8	82	1.1	36	0.8	27	15.6	78	2500	34	1	
No Information Provided	85	2143	56	7	9	6.3	79	6.3	78	1.1	36	9.1	76	1.0	34	0.6	20	13.6	68	211	30	0	
Economically Disadvantaged																							
Free Meals	1672	2068	29	1	2	5.7	71	5.5	69	0.9	29	7.7	64	0.8	26	0.4	15	11.3	57	6424	18	0	
Reduced Meals	203	2098	36	0	5	6.0	75	5.9	74	0.9	31	8.1	68	0.9	29	0.4	15	12.6	63	1043	20	0	
Other	207	2050	23	0	0	5.4	67	5.1	64	0.8	26	7.4	62	0.8	25	0.4	14	10.6	53	718	17	0	
No Information Provided	1190	2143	52	4	9	6.3	79	6.3	79	1.0	33	9.0	75	0.9	32	0.7	22	13.8	69	5445	26	1	
Title I, Part A Schoolwide Program Participants	1774	2075	32	1	3	5.7	71	5.6	69	0.9	29	7.8	65	0.8	27	0.5	15	11.5	58	7135	19	0	
Targeted Assistance Participants	37	2071	27	0	3	5.9	74	5.8	72	0.9	29	7.8	65	0.8	25	0.4	12	11.5	57	110	18	0	
Nonparticipants (Previous Participants)	6	2056	0	0	0	5.7	71	5.7	71	1.2	39	8.3	69	0.7	22	0.3	11	12.0	60	29	7	0	
Homeless Participants at Non-Title I Schools	4	---	---	---	---	---	---	---	---	---	---	---	---	---	---	---	---	---	---	20	20	0	
Nonparticipants (Not Previous Participants)	1438	2122	45	4	7	6.1	77	6.0	75	0.9	32	8.6	72	0.9	30	0.6	20	13.2	66	6330	23	1	
No Information Provided	110	2135	51	5	9	6.3	79	6.3	78	1.1	36	8.9	74	1.0	32	0.6	22	13.7	68	276	25	0	
Migrant																							
Yes	122	2061	30	1	2	5.6	71	5.3	66	0.8	26	7.8	65	0.7	25	0.3	11	10.5	53	399	14	0	
No	3148	2097	38	2	5	5.9	74	5.8	72	0.9	31	8.2	68	0.8	28	0.5	18	12.3	62	13231	21	0	
No Information Provided	99	2140	55	6	10	6.4	80	6.2	78	1.0	35	9.0	75	1.0	33	0.6	21	13.5	67	270	27	0	
Limited English Proficient																							
Current LEP	1216	2031	16	0	0	5.3	67	4.9	61	0.8	27	6.9	58	0.7	23	0.4	12	9.7	49	2341	11	0	
Non-LEP (Monitored 1st Year)	80	2070	29	0	0	5.8	73	5.6	70	0.9	29	7.5	62	0.8	26	0.5	16	11.8	59	255	14	0	
Non-LEP (Monitored 2nd Year)	37	2062	24	0	0	5.6	70	5.9	73	1.0	34	8.3	69	0.9	29	0.5	17	10.4	52	156	17	0	
Other Non-LEP	1920	2138	52	3	8	6.3	78	6.3	79	1.0	33	9.0	75	0.9	31	0.6	20	13.9	70	10850	23	0	
No Information Provided	116	2136	53	5	9	6.2	77	6.2	77	1.0	34	8.9	74	0.9	32	0.7	22	13.7	68	298	26	0	
Bilingual/ESL Program																							
Bilingual	12	2058	17	0	0	5.8	72	5.6	70	1.2	39	7.8	65	0.7	22	0.8	28	12.7	63	14	0	0	
ESL	1205	2030	15	0	0	5.3	67	4.9	61	0.8	26	6.9	57	0.7	23	0.4	13	9.7	48	2234	11	0	
Neither	2048	2135	51	3	8	6.2	78	6.3	79	1.0	33	8.9	74	0.9	31	0.6	20	13.8	69	11371	23	0	
No Information Provided	97	2140	54	6	10	6.3	79	6.3	78	1.1	35	9.1	76	1.0	33	0.6	21	13.6	68	266	27	0	
Special Education																							
Yes	140	2105	41	4	5	5.9	74	6.1	76	1.0	33	8.7	72	0.7	24	0.5	18	12.7	63	427	24	0	
No	3117	2095	37	2	5	5.9	74	5.8	72	0.9	30	8.2	68	0.8	28	0.5	17	12.2	61	13180	21	0	
No Information Provided	112	2133	51	5	10	6.3	78	6.3	78	1.1	36	8.9	74	1.0	33	0.7	22	13.7	68	293	26	0	
Gifted/Talented																							
Participants	37	2316	89	32	43	7.3	91	7.5	94	1.1	38	10.6	89	1.2	40	1.1	38	17.8	89	97	55	14	
Nonparticipants	3217	2093	37	2	5	5.9	74	5.8	72	0.9	30	8.1	68	0.8	28	0.5	17	12.2	61	13510	21	0	
No Information Provided	115	2131	50	5	10	6.3	78	6.2	77	1.1	35	8.8	73	1.0	32	0.7	22	13.5	68	293	24	0	
At-Risk																							
Yes	2759	2082	33	1	3	5.8	72	5.6	71	0.9	30	8.0	66	0.8	27	0.5	16	11.8	59	11822	19	0	
No	501	2169	59	7	13	6.5	82	6.5	81	1.0	34	9.3	78	1.0	35	0.7	25	14.6	73	1797	32	2	
No Information Provided	109	2140	52	6	11	6.2	78	6.2	78	1.1	37	8.9	75	1.0	33	0.7	24	13.9	69	281	26	0	
Career/Technology Education																							
Elective	873	2080	33	1	3	5.8	72	5.5	69	0.9	30	7.9	66	0.8	27	0.5	16	11.7	59	3841	21	0	
Coherent Sequence	757	2099	38	2	6	5.9	74	5.9	73	0.9	31	8.2	68	0.8	28	0.5	18	12.3	61	3341	20	0	
Tech Prep	402	2106	42	2	5	6.0	75	5.9	73	0.9	31	8.5	71	0.9	28	0.5	18	12.6	63	1858	21	0	
No	1218	2102	38	2	6	6.0	74	5.9	73	0.9	30	8.3	69	0.9	29	0.5	18	12.5	63	4550	22	0	
No Information Provided	119	2132	50	5	10	6.2	78	6.2	77	1.1	35	8.8	74	1.0	32	0.6	21	13.7	68	310	25	0	

* Written Composition information can be found on the Summary Report and Written Performance Summary Report.

All Students

	Number of Students Tested	Average Scale Score	Percent Met Standard	Percent Commented Performance	Percent Met THCB Standard for Higher Education Readiness	Results for Each Objective										All Tests Taken												
						1	2	3	4	5	6	7	8	9	10	Number of Students Tested	Percent Met Standard	Percent Commented Performance										
						Functional Relationships	Properties and Attributes of Functions	Linear Functions	Linear Equations and Inequalities	Quadratic and Other Nonlinear Functions	Geometric Relationships and Spatial Reasoning	Two- and Three-Dimensional Representations	Measurement and Similarity	Percents/Proportions/Probability/Statistics	Mathematical Processes and Tools													
						Number of Items Tested in Each Objective																						
						5	5	5	5	5	7	7	7	5	9													
Average Number of Items Correct / Average Percent of Items Correct																												
All Students	7591	2013	21	0	3	2.9	57	2.6	52	2.1	42	2.5	50	2.3	46	2.1	29	3.3	47	2.7	39	1.9	39	3.0	34	13900	21	0
Male	2964	2016	23	0	2	2.9	57	2.6	51	2.0	41	2.4	48	2.3	44	2.1	31	3.4	48	2.7	39	2.0	41	3.2	35	5440	23	0
Female	4609	2011	20	0	3	2.9	57	2.6	52	2.1	42	2.6	51	2.3	46	2.0	29	3.2	46	2.7	38	1.9	38	3.0	33	8430	20	0
No Information Provided	18	2068	39	0	11	3.2	64	3.1	62	2.3	46	2.7	54	2.6	51	2.8	40	3.7	53	3.0	43	2.8	56	3.7	41	30	37	0
Native American	22	2034	32	0	5	2.7	55	2.9	57	2.1	43	2.7	54	2.5	51	2.5	35	3.3	47	3.1	44	2.3	45	2.3	45	34	29	0
Asian	124	2020	29	1	4	2.9	58	2.6	52	2.1	42	2.5	50	2.4	47	2.3	33	3.4	48	2.6	37	2.0	39	3.0	34	268	23	1
African American	1994	2003	19	0	2	2.8	56	2.6	51	2.1	42	2.5	49	2.3	47	1.9	27	3.1	44	2.5	36	1.9	38	2.9	32	3153	19	0
Hispanic	3826	2006	19	0	2	2.9	57	2.5	50	2.0	40	2.4	48	2.2	44	2.0	29	3.3	47	2.7	38	1.8	36	2.9	33	7734	17	0
White	1503	2040	29	1	6	2.9	59	2.8	56	2.2	45	2.8	55	2.3	47	2.3	33	3.5	50	3.0	43	2.3	45	3.5	39	2500	34	1
No Information Provided	122	2040	30	2	8	3.0	59	2.7	54	2.0	41	2.9	58	2.4	48	2.4	35	3.6	51	3.0	43	2.2	45	3.3	37	211	30	0
Economically Disadvantaged	3296	2005	19	0	2	2.8	56	2.5	50	2.0	41	2.4	48	2.2	44	2.0	28	3.2	46	2.6	38	1.9	37	2.9	33	6424	18	0
<i>Free Meals</i>	560	2010	21	0	1	2.8	56	2.6	52	2.1	42	2.5	50	2.3	46	2.0	28	3.3	47	2.7	38	1.9	38	2.9	33	1043	20	0
<i>Reduced Meals</i>	332	1997	16	0	1	2.9	59	2.5	50	2.0	40	2.2	45	2.2	44	1.9	27	3.1	45	2.5	36	1.7	35	2.7	30	718	17	0
<i>Other</i>	3240	2023	25	0	3	2.9	58	2.7	53	2.1	43	2.6	52	2.3	47	2.1	31	3.4	48	2.8	40	2.1	41	3.2	35	5445	26	1
<i>No Information Provided</i>	163	2033	26	1	7	3.0	60	2.7	54	2.1	41	2.8	56	2.3	46	2.3	33	3.5	50	3.0	42	2.1	41	3.2	36	270	28	0
Title I, Part A Schoolwide Program Participants	3708	2010	20	0	2	2.9	58	2.5	51	2.1	41	2.4	49	2.3	46	2.0	28	3.3	47	2.6	38	1.9	37	3.0	33	7135	19	0
<i>Targeted Assistance Participants</i>	58	2003	17	0	3	2.8	56	2.7	53	1.9	39	2.3	47	2.3	46	2.1	29	2.9	42	2.8	40	1.7	34	2.8	31	110	18	0
<i>Nonparticipants (Previous Participants)</i>	16	1984	6	0	0	2.3	45	2.6	51	1.7	34	1.8	35	1.9	39	1.6	22	3.8	54	2.6	38	1.7	34	2.8	31	29	7	0
<i>Homeless Participants at Non-Title I Schools</i>	11	2011	18	0	0	2.4	47	1.9	38	2.7	55	2.4	47	2.1	42	2.2	31	2.9	42	2.5	36	2.6	53	3.3	36	20	20	0
<i>Nonparticipants (Not Previous Participants)</i>	3630	2016	23	0	3	2.8	57	2.6	52	2.1	42	2.5	51	2.3	45	2.1	30	3.3	48	2.7	39	2.0	40	3.1	35	6330	23	1
<i>No Information Provided</i>	168	2031	26	1	7	3.0	59	2.7	54	2.1	42	2.8	55	2.2	45	2.3	33	3.4	49	2.9	42	2.1	43	3.2	36	276	25	0
Migrant	190	2000	14	0	1	2.9	59	2.3	47	1.8	37	2.3	45	2.2	43	2.1	30	3.2	46	2.7	39	1.8	36	2.8	31	399	14	0
<i>Yes</i>	7242	2013	22	0	2	2.9	57	2.6	52	2.1	42	2.5	50	2.3	46	2.1	29	3.3	47	2.7	38	1.9	39	3.0	34	13231	21	0
<i>No</i>	159	2031	26	1	7	3.0	59	2.7	54	2.0	41	2.8	56	2.3	46	2.3	33	3.4	49	2.9	42	2.1	42	3.2	35	270	27	0
<i>No Information Provided</i>	972	1988	13	0	1	2.8	55	2.3	47	2.0	39	2.1	41	2.1	41	1.9	27	3.2	45	2.5	35	1.7	33	2.7	31	2341	11	0
Limited English Proficient	118	2009	17	1	3	2.9	59	2.4	48	2.0	40	2.3	45	2.4	48	2.1	30	3.3	47	2.6	37	1.8	35	3.0	34	255	14	0
<i>Current LEP</i>	77	2007	16	0	1	2.9	57	2.5	50	2.1	41	2.4	49	2.1	42	2.0	29	3.6	51	2.4	34	1.9	39	2.9	32	156	17	0
<i>Non-LEP (Monitored 1st Year)</i>	6247	2016	23	0	3	2.9	57	2.6	52	2.1	42	2.6	51	2.3	46	2.1	30	3.3	47	2.7	39	2.0	40	3.1	34	10850	23	0
<i>Non-LEP (Monitored 2nd Year)</i>	177	2035	27	1	6	3.0	60	2.7	54	2.1	43	2.8	55	2.3	46	2.3	33	3.5	49	3.0	42	2.1	42	3.2	36	298	26	0
<i>Other Non-LEP</i>	9	2035	33	0	0	3.1	62	2.4	49	2.2	44	2.0	40	2.2	44	2.3	33	4.1	59	3.2	46	1.7	33	3.2	36	14	0	0
<i>No Information Provided</i>	920	1988	13	0	1	2.8	55	2.3	47	2.0	40	2.0	41	2.1	41	1.9	28	3.2	45	2.5	35	1.7	33	2.7	30	2234	11	0
Bilingual/ESL Program	6491	2016	23	0	3	2.9	57	2.6	52	2.1	42	2.6	51	2.3	46	2.1	30	3.3	47	2.7	39	2.0	39	3.1	34	11371	23	0
<i>Bilingual</i>	159	2033	26	1	7	3.0	59	2.7	54	2.1	41	2.8	57	2.3	46	2.3	33	3.4	49	2.9	42	2.1	43	3.2	36	266	27	0
<i>ESL</i>	230	2016	21	1	5	2.7	55	2.6	52	2.0	40	2.4	48	2.3	46	2.2	32	3.4	48	2.8	41	2.0	40	3.0	33	427	24	0
<i>Neither</i>	1782	2012	21	0	2	2.9	57	2.6	51	2.1	42	2.5	50	2.3	46	2.0	29	3.3	47	2.7	38	1.9	39	3.0	34	13180	21	0
<i>No Information Provided</i>	179	2034	26	1	6	3.0	60	2.7	54	2.1	42	2.7	55	2.3	45	2.3	33	3.5	50	2.9	42	2.1	43	3.3	36	293	26	0
Special Education	46	2125	57	9	28	3.4	67	3.3	65	2.8	56	3.3	66	3.0	65	3.0	42	4.3	61	3.8	54	2.6	52	4.6	51	97	55	14
<i>Yes</i>	7361	2012	21	0	2	2.9	57	2.6	51	2.1	41	2.5	50	2.3	45	2.0	29	3.3	47	2.7	38	1.9	39	3.0	34	13510	21	0
<i>No</i>	184	2032	23	1	6	2.9	58	2.7	55	2.1	42	2.7	54	2.3	46	2.3	33	3.4	49	2.9	42	2.1	43	3.2	36	293	24	0
<i>No Information Provided</i>	6443	2010	20	0	2	2.8	57	2.6	51	2.1	41	2.5	49	2.3	45	2.0	29	3.3	47	2.7	38	1.9	38	3.0	33	11822	19	0
At-Risk	973	2031	28	1	6	2.9	58	2.7	53	2.2	45	2.6	52	2.4	47	2.2	32	3.5	50	2.9	41	2.1	43	3.3	37	1797	32	2
<i>Yes</i>	175	2036	27	1	7	2.9	59	2.8	55	2.1	42	2.8	56	2.3	46	2.3	34	3.5	50	3.0	42	2.1	43	3.3	37	281	26	0
<i>No</i>	2135	2012	22	0	3	2.8	57	2.6	52	2.1	43	2.5	50	2.3	45	2.0	29	3.3	47	2.7	38	2.0	39	3.0	33	3841	21	0
<i>No Information Provided</i>	1733	2010	19	0	2	2.9	57	2.5	50	2.0	40	2.5	50	2.2	45	2.0	29	3.3	47	2.7	39	1.9	38	3.0	33	3341	20	0
Career/Technology Education	989	2018	23	0	3	3.0	60	2.6	53	2.1	42	2.5	51	2.4	47	2.1	30	3.4	48	2.8	40	1.9	39	3.0	33	1858	21	0
<i>Elective</i>	2541	2012	22	0	3	2.8	56	2.6	51																			



All Students

	Number of Students Tested	Average Scale Score	Percent Met Standard	Percent Commended Performance	Results for Each Objective										All Tests Taken		
					1		2		3		4		5		Number of Students Tested	Percent Met Standard	Percent Commended Performance
					Nature of Science	Organization of Living Systems	Interdependence of Organisms and the Environment	Structures and Properties of Matter	Motion, Forces, and Energy								
					Number of Items Tested in Each Objective												
					17	8	8	11	11								
Average Number of Items Correct / Average Percent of Items Correct																	
All Students	9192	2019	22	0	7.3	43	3.0	37	4.1	51	4.2	38	4.5	41	13900	21	0
Male	3106	2024	24	0	7.4	43	3.0	37	4.1	51	4.2	38	4.8	43	5440	23	0
Female	6068	2017	21	0	7.2	42	3.0	37	4.1	51	4.2	38	4.4	40	8430	20	0
No Information Provided	18	2074	44	0	9.0	53	3.7	47	4.5	56	5.3	48	5.1	46	30	37	0
Native American	21	2043	24	0	7.5	44	3.5	44	4.8	60	4.8	43	4.6	42	34	29	0
Asian	173	2018	24	0	7.0	41	3.1	39	3.9	48	4.4	40	4.6	42	268	23	1
African American	2053	2015	20	0	7.2	42	3.1	38	4.1	51	4.3	39	4.2	38	3153	19	0
Hispanic	5398	2009	18	0	6.9	41	2.8	35	3.9	49	4.0	36	4.4	40	7734	17	0
White	1396	2062	38	0	8.6	51	3.5	44	4.7	59	4.7	43	5.3	48	2500	34	1
No Information Provided	151	2045	41	1	8.0	47	3.3	41	4.5	56	4.5	41	5.1	46	211	30	0
Economically Disadvantaged	4432	2011	18	0	7.0	41	2.9	36	3.9	49	4.1	37	4.4	40	6424	18	0
Free Meals	729	2011	19	0	7.0	41	2.9	36	4.1	51	4.0	36	4.4	40	1043	20	0
Reduced Meals	497	2006	18	0	6.8	40	2.8	35	3.9	48	4.0	36	4.3	39	718	17	0
Other	3348	2033	28	0	7.7	45	3.2	40	4.3	54	4.4	40	4.7	43	5445	26	1
No Information Provided	186	2042	40	1	8.0	47	3.3	41	4.4	55	4.5	41	5.0	46	270	28	0
Title I, Part A Schoolwide Program Participants	4863	2014	20	0	7.1	42	2.9	36	4.0	50	4.1	37	4.4	40	7135	19	0
Targeted Assistance Participants	62	2009	19	0	6.9	41	3.3	41	4.1	51	4.0	36	4.3	39	110	18	0
Nonparticipants (Previous Participants)	19	2003	5	0	6.8	40	2.8	36	4.3	53	4.2	38	3.3	30	29	7	0
Homeless Participants at Non-Title I Schools	16	2015	25	0	7.1	42	3.1	39	3.9	48	3.8	34	4.6	42	20	20	0
Nonparticipants (Not Previous Participants)	4035	2025	25	0	7.4	44	3.1	39	4.2	52	4.3	39	4.6	42	6330	23	1
No Information Provided	197	2041	38	1	7.9	46	3.2	41	4.4	55	4.5	41	5.0	45	276	25	0
Migrant	286	2000	15	0	6.7	39	2.6	33	3.7	46	3.8	35	4.3	39	399	14	0
Yes	8717	2020	22	0	7.3	43	3.0	38	4.1	51	4.2	38	4.5	41	13231	21	0
No	189	2038	38	1	7.9	46	3.2	40	4.3	54	4.4	40	5.0	46	270	27	0
No Information Provided	1491	1988	11	0	6.2	36	2.6	32	3.5	44	3.8	34	4.3	39	2341	11	0
Limited English Proficient	181	1994	13	0	6.5	38	2.7	33	3.6	46	3.9	35	4.2	38	255	14	0
Current LEP	107	2012	17	0	6.7	39	3.0	38	3.8	48	4.1	38	4.6	41	156	17	0
Non-LEP (Monitored 1st Year)	7198	2026	24	0	7.5	44	3.1	39	4.2	53	4.3	39	4.6	41	10850	23	0
Non-LEP (Monitored 2nd Year)	215	2039	36	0	7.8	46	3.3	41	4.4	55	4.4	40	5.0	45	298	26	0
Other Non-LEP	12	2011	17	0	6.3	37	3.5	44	3.8	48	4.5	41	3.9	36	14	0	0
No Information Provided	1427	1989	12	0	6.2	36	2.6	32	3.5	44	3.8	34	4.3	39	2234	11	0
Bilingual/ESL Program	7558	2025	24	0	7.4	44	3.1	38	4.2	52	4.3	39	4.5	41	11371	23	0
Bilingual	186	2040	39	1	7.9	47	3.2	40	4.4	54	4.4	40	5.1	46	266	27	0
Neither	271	2029	26	1	7.4	43	3.2	40	4.2	52	4.2	38	4.8	44	427	24	0
No Information Provided	8713	2019	22	0	7.2	43	3.0	37	4.1	51	4.2	38	4.5	41	13180	21	0
Special Education	208	2041	38	0	7.8	46	3.3	41	4.3	54	4.4	40	5.0	46	293	26	0
Yes	52	2098	40	4	9.1	54	4.0	50	4.9	61	5.3	48	5.9	53	97	55	14
Participants	8932	2018	22	0	7.2	43	3.0	37	4.1	51	4.2	38	4.5	41	13510	21	0
Nonparticipants	208	2040	37	0	7.8	46	3.3	41	4.4	55	4.4	40	5.0	46	293	24	0
No Information Provided	7894	2016	21	0	7.2	42	3.0	37	4.0	51	4.1	37	4.5	40	11822	19	0
At-Risk	1094	2040	31	0	7.8	46	3.3	41	4.4	55	4.5	41	4.8	44	1797	32	2
Yes	204	2042	38	0	7.8	46	3.3	41	4.4	56	4.5	41	5.0	45	281	26	0
No	2466	2018	21	0	7.2	42	3.0	37	4.1	51	4.2	38	4.4	40	3841	21	0
No Information Provided	2278	2018	21	0	7.2	42	3.0	37	4.1	51	4.1	37	4.5	41	3341	20	0
Career/Technology Education	1230	2017	21	0	7.2	42	2.9	37	4.0	51	4.1	37	4.5	41	1858	21	0
Elective	2997	2022	24	0	7.3	43	3.0	38	4.1	52	4.2	38	4.5	41	4550	22	0
Coherent Sequence	221	2039	37	0	7.9	46	3.2	40	4.3	54	4.4	40	5.0	45	310	25	0
Tech Prep																	
No																	
No Information Provided																	

"---" = No Data Reported
For Fewer Than Five Students

Written Performance Summary Report

Report Date: AUGUST 2006
Date of Testing: JULY 2006

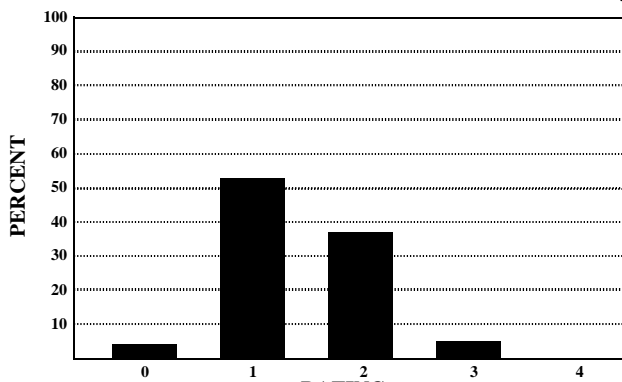
All Students

Number Tested: 3369

"---" = No Data Reported For
Fewer Than Five Students

Written Composition Summary

Written Composition Rating Summary



Rating	0	1	2	3	4
Number	121	1796	1263	180	9
Percent	4	53	37	5	0

Analytic Information Summary

Analytic Category

Analytic Category	Written Composition	
	Rating of 0	Rating of 1
	Number of Papers	
1. Weak Focus and Coherence	2	581
2. Weak or Illogical Organization	12	855
3. Weak Development of Ideas	16	1259
4. Little or No Sense of Voice	0	20
5. Little or No Control of Conventions	46	1499
6. Off Topic Response	46	*
7. Indecipherable Response	1	*
8. Insufficient Response	30	*
9. No Writing Attempted	44	*

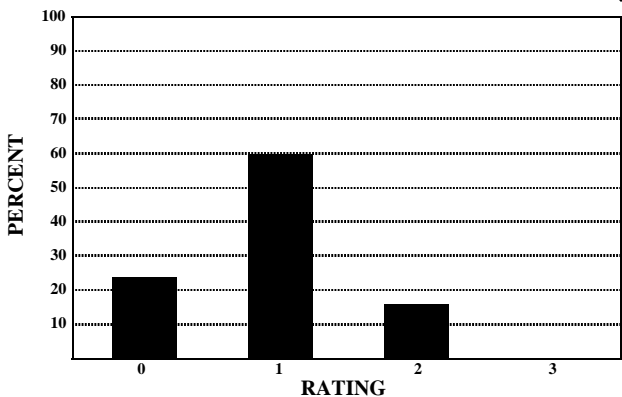
Papers receiving **Written Composition Ratings** of 0 or 1 were scored analytically.
For each category the number of papers having that deficiency is indicated. A student's paper may be listed in more than one category.
Papers receiving **Written Composition Ratings** of 2, 3, or 4 were not scored analytically.

* Analytic Category is not given for a rating of 1.

Short Answer Summary

Literary Selection

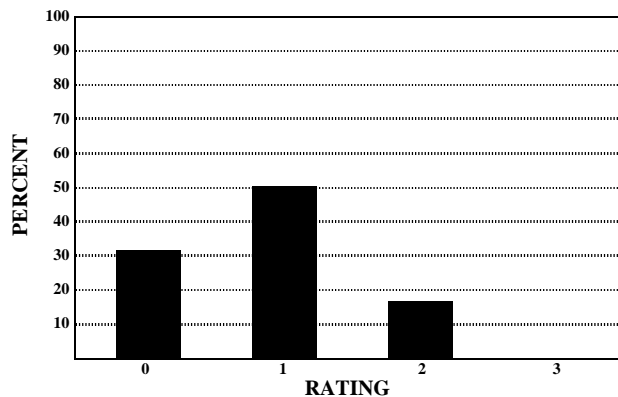
Objective 2



Rating	0	1	2	3
Number	815	2022	529	3
Percent	24	60	16	0

Expository Selection

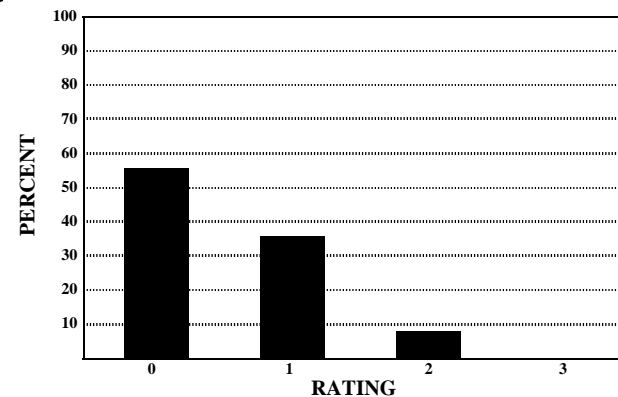
Objective 3



Rating	0	1	2	3
Number	1094	1708	564	3
Percent	32	51	17	0

Connecting Selections

Objective 3



Rating	0	1	2	3
Number	1880	1216	272	1
Percent	56	36	8	0