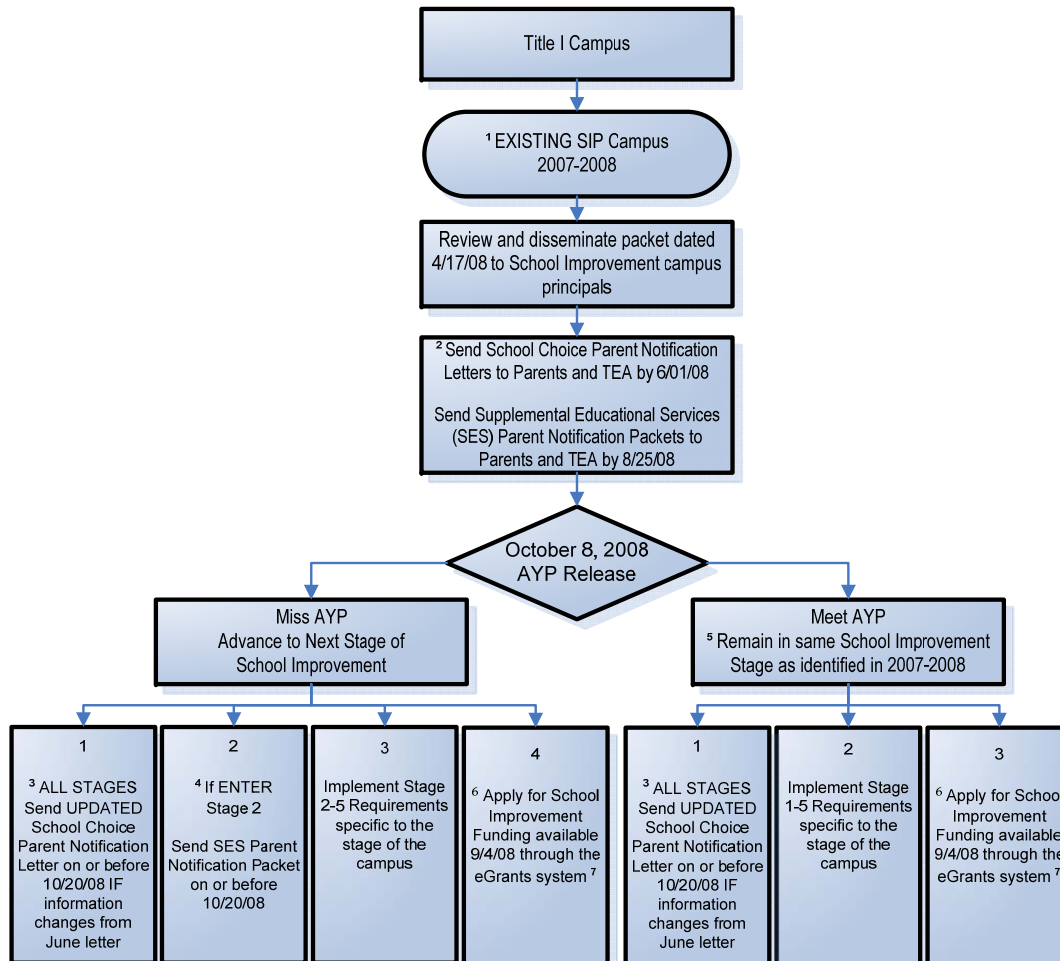


Title I School Improvement Guide to Implementation 2008-2009



Helpful Hints

¹ An "existing" SIP campus is a campus that missed AYP 2 years in a row for the same indicator and was in the School Improvement Program (SIP) in 2007-2008.

² The TEA required letters for School Choice ABLE and NOT ABLE may be found at: http://www.tea.state.tx.us/nclb/titleia/sip/2008-09/2008-09_sipB.html. All INITIAL school choice and SES parent notification letters must be disseminated to parents and mailed to TEA.

³ If AFTER the October AYP release information in the June 1 letter changes, campuses are required to send a follow up letter to parents and TEA. For example, if a campus was not offered as a campus for school choice due to missing AYP in 2007-08, and MET AYP for 2008-09, this campus may now be offered as a campus for school choice.

⁴ Campuses entering Stage 2 for the first time in 2008-09 must disseminate to parents and mail to TEA the SES packet on or before October 20, 2008. Please visit the SIRC website at <http://www5.esc13.net/ses/index.html> for additional assistance on determining which providers serve your geographical region.

⁵ If an existing SIP campus MEETS AYP in 2008-09, that campus will remain in the same SIP stage identified for school year 2007-08. If an existing SIP campus MISSES AYP in 2008-09, that campus will progress to the next SIP stage. No campuses will exit School Improvement during school year 2008-09.

⁶ TEA will approve pre-award costs for any SIP-related costs not requiring specific approval incurred by the campus as of July 1, 2008.

⁷ Campuses accepting School Improvement Program funds must expend at least 75% of the current year SIP campus allocation. Failure to meet this requirement may cause the LEA's 2009 Initial Compliance Review (ICR) score in the 2009 NCLB desk audit process and subsequent Performance-Based Monitoring (PBM) interventions to be elevated.