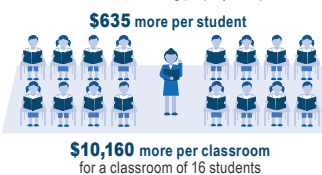
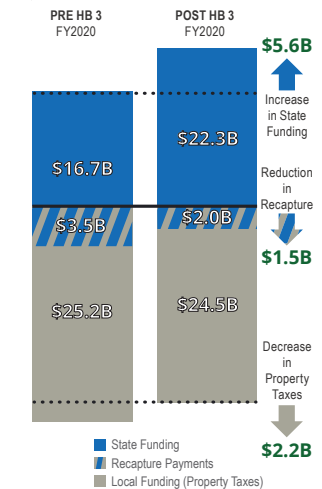
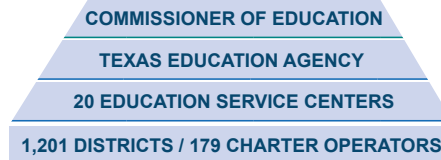


IMPACT OF HB 3

HB 3 was accompanied by an increased state appropriation of \$11.6B over the biennium. Here's how the appropriation applies this school year.



ORGANIZATIONS



District Size	Enrollment (Fall 2018)	Number of Districts/Charters	% of All Students
50,000 & Over	1,599,023	20	29.44%
25,000-49,999	1,185,727	33	21.83%
10,000-24,999	1,002,965	64	18.46%
5,000-9,999	541,261	76	9.96%
3,000-4,999	353,010	92	6.50%
1,600-2,999	291,239	136	5.36%
1,000-1,599	194,562	154	3.58%
500-999	162,270	231	2.99%
Under 500	101,853	395	1.88%
Total	5,431,910	1,201	100.00%

8,845 CAMPUSES (INCLUDING 747 CHARTERS)

Campus Type	Enrollment (Fall 2018)	Number of Campuses	% of All Students
Elementary School	2,583,761	4,808	47.57%
Elementary /Secondary	199,905	564	3.68%
Middle School	934,851	1,370	17.21%
Junior High School	224,222	330	4.13%
High School	1,489,171	1,773	27.42%
Total	5,431,910	8,845	100.00%

PERSONNEL

DISTRICT STAFF BY CATEGORY*

	Full-Time Equivalents	Avg. Base Salary
Teachers	358,445	\$54,121
Campus Administration	21,812	\$78,947
Central Administration	8,287	\$103,379
Professional Support	73,190	\$64,063
Total Professionals	462,485	\$57,754
Paraprofessionals	74,325	\$21,210
Auxiliary Staff	184,109	\$26,891
Total Staff	721,078	\$46,099

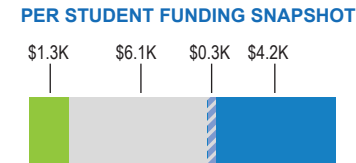
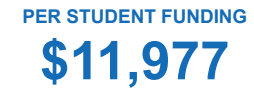
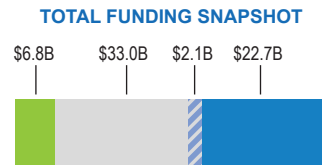
*Note: Professionals who are part of a Shared Services Agreement Assignment are not reflected in individual categories, but are represented in the Total Professionals/Staff counts.

TEACHER PROFILES

	Full-Time Equivalents	% of Total
Gender		
Females	273,384	76.25%
Males	85,150	23.74%
Ethnicity		
African American	37,880	10.56%
American Indian	1,236	0.34%
Asian	6,037	1.68%
Hispanic	99,274	27.68%
Pacific Islander	676	0.18%
White	209,353	58.39%
Two or More Races	4,076	1.13%
Experience		
First Year	24,961	6.96%
1-5 years	103,781	28.94%
6-10 years	68,149	19.00%
11-20 years	105,181	29.33%
20+ years	56,461	15.74%

FINANCES

TOTAL PUBLIC EDUCATION SPENDING (FY 2018)



STRATEGIC PRIORITIES

TEA STRATEGIC PRIORITIES AND ENABLERS

Every child, prepared for success in college, a career or the military.

Strategic priorities

- Recruit, support and retain teachers and principals
- Build a foundation of reading and math
- Connect high school to career and college
- Improve low-performing schools

Enablers

- Increase transparency, fairness and rigor in district and campus academic and financial performance
- Ensure compliance, effectively implement legislation and inform policymakers
- Strengthen organizational foundations (resource efficiency, culture, capabilities, partnerships)

tea.texas.gov TXschools.gov

Twitter.com #IAmTXEd

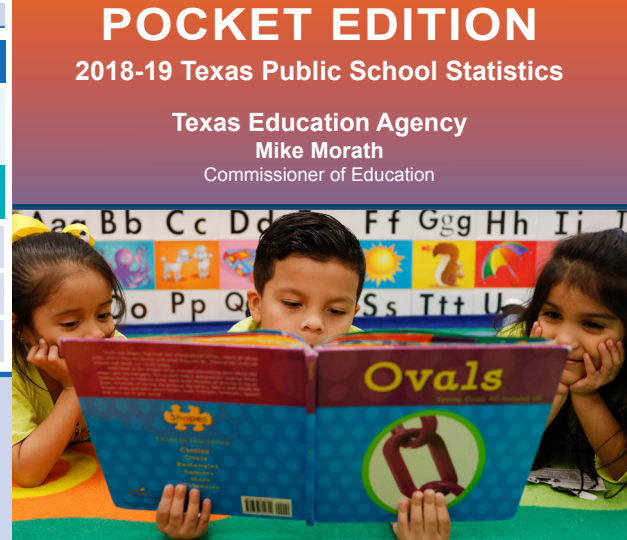
TexasAssessment.com

Information contained in this pamphlet was compiled from data provided by the PEIMS collection, the TAPR report, the TEA Payment Report, and the General Appropriations Act.

For more information, contact:
Texas Education Agency
Division of Communications: (512) 463-9000
www.tea.texas.gov/communications/pocket-edition/

For additional copies of this brochure, visit:
www.tea.texas.gov/publications/info/

February 2020



POCKET EDITION
2018-19 Texas Public School Statistics

Texas Education Agency
Mike Morath
Commissioner of Education

The Texas public school system consists of:

- 1,201 school districts and charters
- 8,845 campuses
- 358,445 teachers
- 5.431 million students

