

Statewide Leadership Networks *October 8, 2019*

Division of Special Education
Texas Education Agency





True North Statement

“Together, we are committed to high expectations and strong systems that achieve equitable outcomes for every student with a disability.”

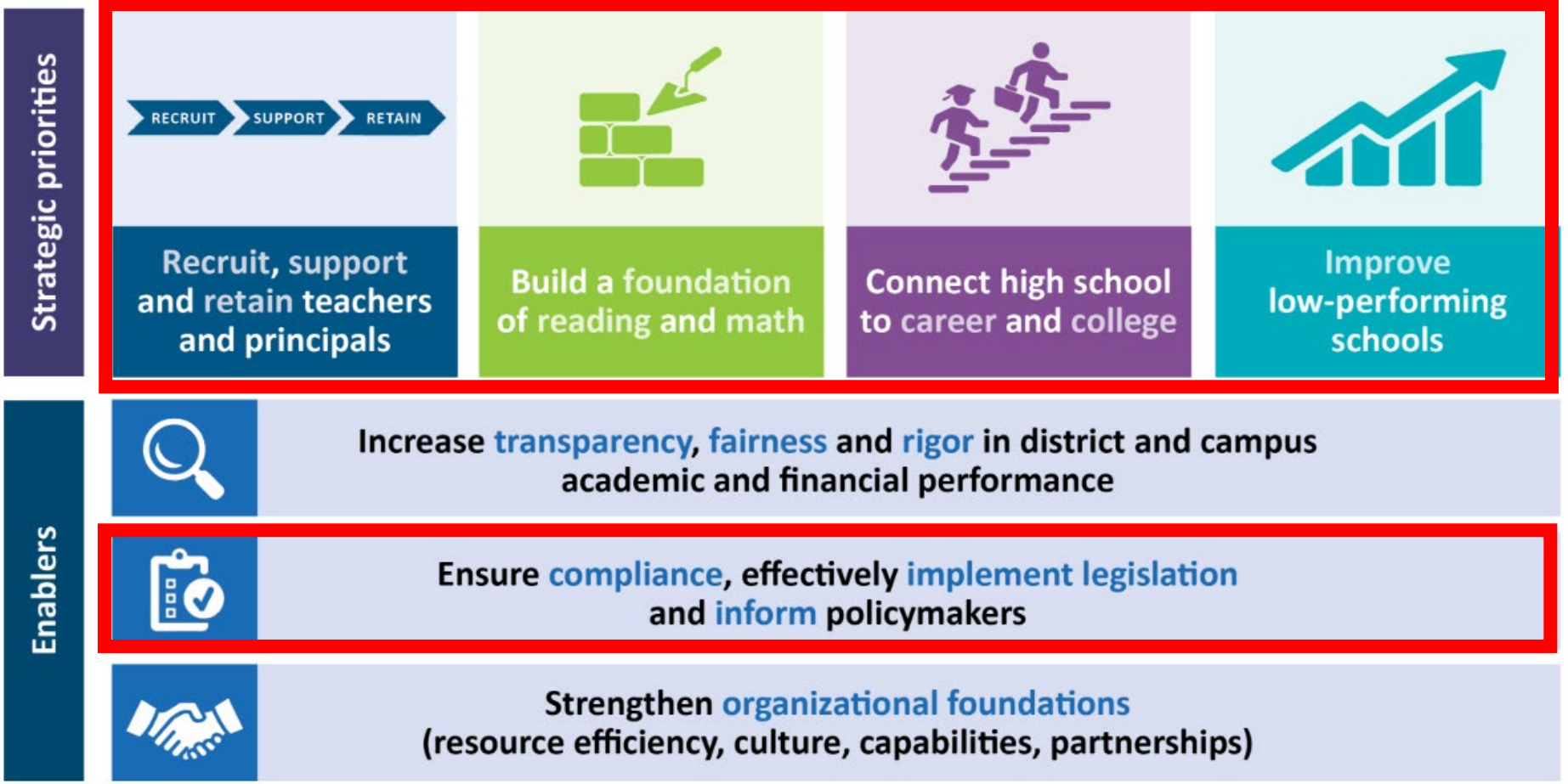
Objectives

Participants will learn

- Alignment of Statewide Leadership Networks to Agency Strategic Plan and Special Education Plan
- What a Statewide Leadership Network is and its objectives
- Delivery Chain
- Network Overviews
- Stay Connected

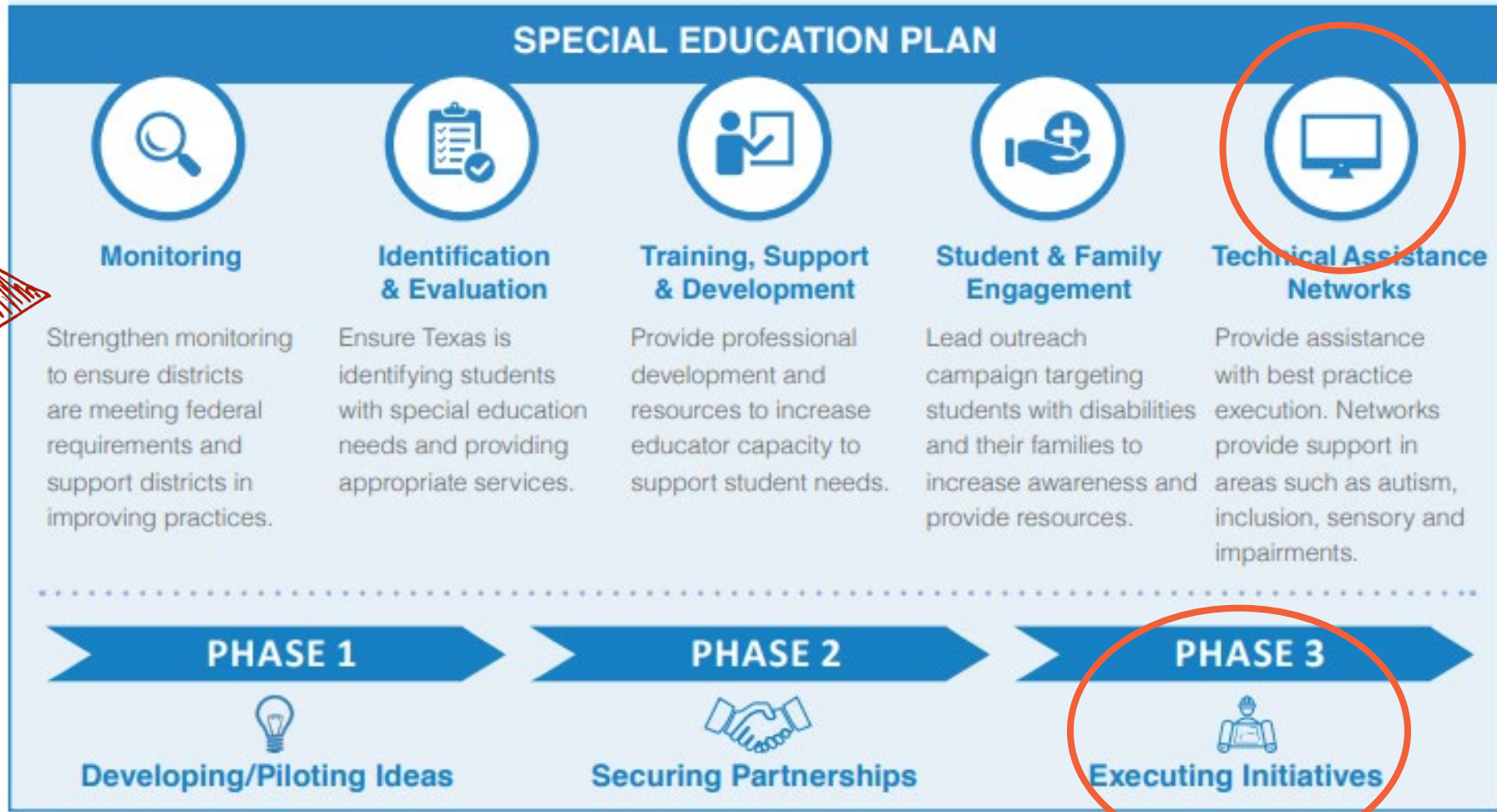
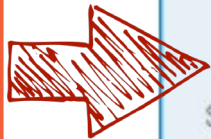
Statewide Leadership Networks

Every child, prepared for success in college, a career or the military.



Alignment to Special Education Plan

OSEP Report



Statewide Leadership Networks

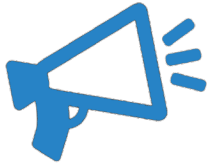
TEA awards a statewide leadership grant to a University or ESC who is responsible for coordinating a 20-region network.

Each ESC has a network member located at their ESC.

The network lead is tasked with directing the 20 network members in order to achieve their goals.



Objectives/Purpose



Provide resources and training for LEA staff and families



Align practices across the state

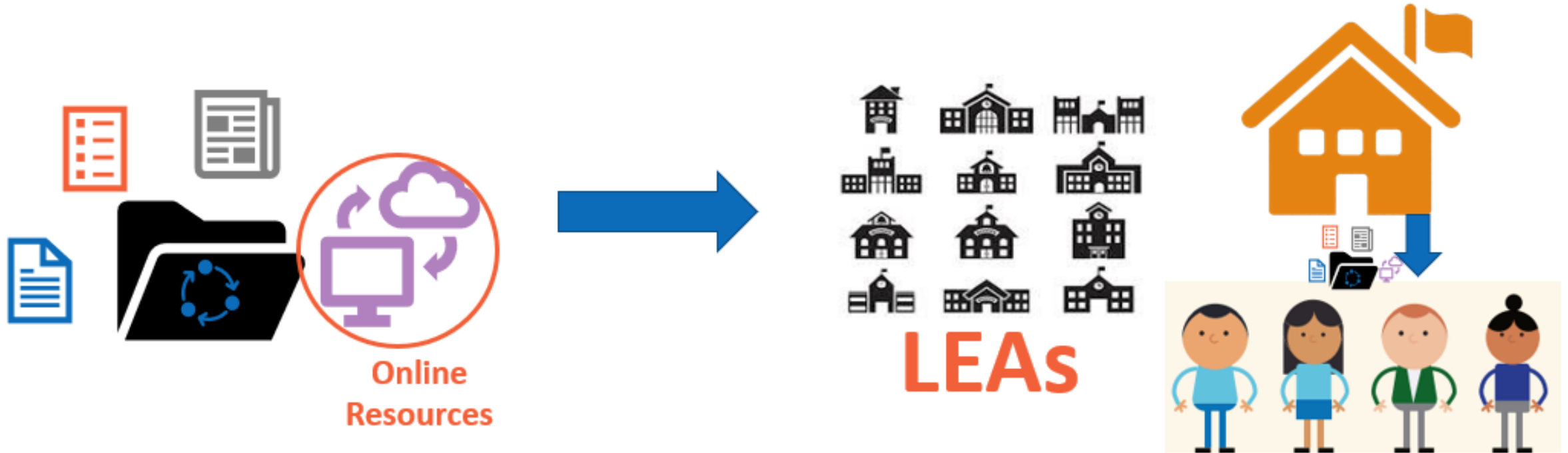


Increase outcomes for students with disabilities

How does this information get to the LEAs?



How does this information get to the LEAs?



Networks Overview

**Child Find,
Evaluation,
ARD Supports**

**School, Family,
and Community
Engagement**

**Inclusion
in
Texas**

**Texas
Statewide
Leadership for
Autism Training
(TSLAT)**

**Tiered
Interventions
using Evidence-
based Research
(TIER)**

**Texas Complex
Access Network
(Texas CAN)**

**Texas
Sensory Support
Network
(TxSSN)**

**Small
and Rural
Schools
Network
(SRSN)**

**Student-
Centered
Transitions
Network
(SCTN)**

**Multiple
Exceptionalities
and
Multiple Needs
(MEMN)**

Child Find, Evaluation, and ARD Supports



childfindtx.tea.texas.gov



Network Overview



Implement effective Child Find practices



Conduct comprehensive evaluations



Practice collaborative ARD processes

Highlighted Network Activities



Produce decision making guides for LEAs to review data of students not currently identified (e.g. Rtl, 504 populations), but who may need an evaluation



Create tools to support improved processes: parent requests, evaluation timeline tracking and evaluation progress



Develop guidance for comprehensive evaluation of a specific learning disability (SLD) (i.e., dyslexia, dyscalculia, and/or dysgraphia)



Train on standards-based IEPs with an emphasis on impact of disability condition and best practices for ARD facilitators

TEA Contact

Child Find, Evaluation and ARD Supports Network

Dawne Vanderhule

dawne.vanderhule@tea.texas.gov

childfindtx.tea.texas.gov



spedtex.org



School, Family, and Community Engagement

Network Overview



Build the capacity of educators to work collaboratively with families and community members in supporting positive outcomes for students with disabilities



Provide resources and technical assistance about special education through the SPEDTex call center and website



House or link to resources for parents on the SPEDTex website



Highlighted Network Activities



Create a model framework for collaborative parent engagement and self-assessment tools for LEAs



Facilitate four focus groups to gather information regarding trends and needs from the perspective of parents and other stakeholders



Develop a database of professional development resources focused on building capacity of educators to work collaboratively with families and communities

TEA Contact

School, Family, and Community Engagement

Daniela Licona

daniela.licona@tea.texas.gov

spedtex.org



Network Overview



Build a statewide culture of high expectations for students with disabilities



Build local education agency capacity to provide meaningful access to inclusive environments



Significantly improve academic and functional outcomes for students served by special education



Highlighted Network Activities



Develop reading and math trainer of trainer (TOT) resources addressing how disabilities affect student learning



Provide technical assistance and training to ESCs on universal supports



Develop online resources to help administrators understand instructional leadership practices to support teachers in inclusive settings



Website resources for: Inclusion support beyond co-teach, Data-based individualization (DBI), Assistive technology (AT), and online courses

TEA Contact

Inclusion in Texas

Donna Holmes

donna.holmes@tea.texas.gov

www.InclusionInTexas.org





www.txautism.net



Network Overview



Build capacity to meet the unique needs of students with autism spectrum disorders



Training: increase knowledge and implementation of evidence-based practices



Resources for educators and parents: academic, functional, and behavioral supports

Highlighted Network Activities



Maintain 90 Free online courses—incorporate leveling, badging, micro-credentialing



Autism Circuit professional learning community—focus on high-yield evidence-based practices



Four livestreamed workshops targeting general and special education teacher teams



Video Gallery, Texas Autism Resource Guide for Effective Teaching, Autism Circuit Toolkit

TEA Contact

Texas Statewide Leadership
for Autism Training (TSLAT)

Carol Trautman

carol.trautman@tea.texas.gov

www.txautism.net

TIER

Tiered Interventions using Evidence-based Research

tier.tea.texas.gov



TEXAS Education

The University of Texas at Austin
College of Education



Tiered Interventions using Evidence-based Research (TIER)

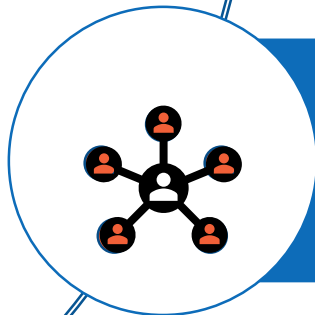
Network Overview



Design and deliver a series of multi-tiered systems of support (MTSS) training modules



Trainer-of-trainer's institute in March 2020 to launch two forms of the modules: face-to-face and on-demand



Provide a comprehensive and coherent framework for evidence-based intervention practices across the state



Highlighted Network Activities



Develop and deliver 10 training modules to provide educators, coaches, leaders, other school personnel, and preservice educators with a deep understanding of MTSS and its components



3-day Trainer-of-trainers (TOT) institute in Austin



Two forms of modules

- Face-to-face - presented at TOT
- On-demand - housed on a project-specific website



TIER Website – will contain all training materials and resources for each module. Coaching checklists will also be included as part of resources

TEA Contact

Tiered Interventions using Evidence-based Research (TIER)

Frank Solano

frank.solano@tea.texas.gov

tier.tea.texas.gov



txcan.tea.texas.gov

Texas Complex Access Network (TX CAN)

Network Overview



Increase capacity of local educational agencies to provide for the complex educational and functional needs of students with significant cognitive disabilities



Provide training and resources that emphasize evidence-based best practices, equal access, self-determination and high expectations



Improve outcomes for students with significant cognitive disabilities



Highlighted Network Activities



Facilitate statewide Inclusion Institute with Professional Learning Communities (PLC) to collaborate and learn support strategies.



Produce six “How-To” webinars with implementation checklists on high-leverage best practice strategies



Train developing Appropriate and Rigorous IEPs for Students with Significant Cognitive Disabilities (including IEP quality and rigor rubric)



Publish research summary paper on evidence-based practices for students with significant cognitive disabilities with related information on current data in Texas

TEA Contact

Texas Complex Access Network (Tx CAN)

Patrick Wong

patrick.wong@tea.texas.gov

txcan.tea.texas.gov



txssn.org



Network Overview



Recruit & train educators to teach students with sensory impairments



Develop trainings to expand the number of qualified support staff



Collaborate with other networks to support students with sensory impairments & their families

Highlighted Network Activities



Partner with Texas universities to provide quality traditional and nontraditional trainings to future educators of students with sensory support needs



Mentor educators and related staff to provide ongoing coaching and resources to enhance professional learning



Collaborate with all ESCs to provide activities and resources such as Babies Day Out, Technology Olympics, Braille Challenge, and DHH Optimist Essay Contests to support students and families



Provide technical assistance to various networks to increase opportunities for students with sensory support needs and their families

TEA Contacts

Texas Sensory Supports Network

Emily Robinson & Vicki DePountis

emily.robinson@tea.texas.gov

vicki.depountis@tea.texas.gov

txssn.org

Small and Rural Schools Network

www.smallandruralschools.org



Small and Rural Schools Network

Network Overview



Address the educational challenges unique to small and rural LEAs



Develop training, resources, and certification opportunities



Provide students in small and rural LEAs access to a more equitable level of services

Highlighted Network Activities



Build an evaluation personnel certification reimbursement opportunity



Launch speech teletherapy pilot



Produce secondary transition best practices guidance for Small/Rural LEAs



Create website and online learning experiences

TEA Contact

Small and Rural Schools Network

Donna Holmes

donna.holmes@tea.texas.gov

smallandruralschools.org



www.texastransition.org



Garrett Center

SAM HOUSTON STATE UNIVERSITY



Student-Centered Transitions Network

Network Overview



Build collaborative infrastructures among students, families, and communities



Equip all students with disabilities to be actively involved in planning, communicating, and evaluating progress to meet their transition goals



Build an infrastructure of supports that facilitate the successful transition of students from pre-kindergarten through post-secondary readiness



Highlighted Network Activities



Promote an innovative approach to early childhood special education programs to include tools and resources with a focus on outcomes and kindergarten readiness



Create supports and tools for LEAs that generate student interest and build a foundation for successful high school course completion



Develop resources and partnerships to create increased opportunities for college and career mentoring



Provide guidance, supports, and tools targeting inclusive services for students with disabilities

TEA Contacts

Student-Centered Transitions Network

Susie May

susan.may@tea.texas.gov

Terrie Breeden

terrie.breeden@tea.texas.gov

www.texastransition.org

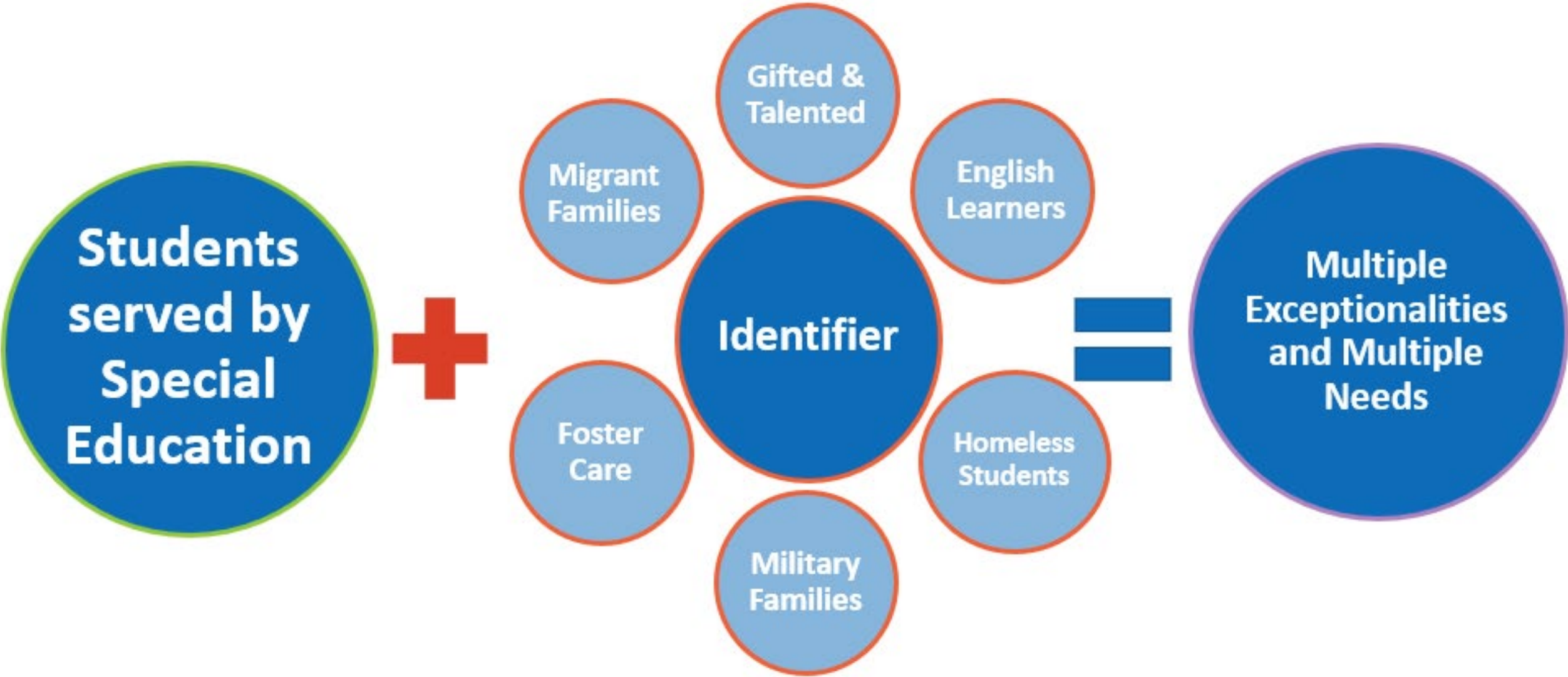
MULTIPLE Exceptionalities & Needs Network



<https://esfone.wixsite.com/memn>



Multiple Exceptionalities & Multiple Needs



Multiple Exceptionalities & Multiple Needs

Network Overview



Increase awareness of students with multiple exceptionalities and multiple needs



Create quality resources to support GT and EL students with disabilities



Create quality resources to support highly mobile students who also have disabilities



Highlighted Network Activities



Increase awareness of students with multiple exceptionalities and multiple needs



Equip teachers, families, and administrators with tools to facilitate the IEP development process, identification, and programming for MEMN students.



Develop Trainer-of-Trainer modules in the 4 areas to provide tools and resources for MEMN students to key stakeholders

Sped/GT

Sped/EL

Sped/Highly Mobile (Migrant/Military)

Sped/Highly Mobile (Homeless/Foster)



TEA Contact

Multiple Exceptionalities and Multiple Needs

Dana Garza

dana.garza@tea.texas.org

<https://esfone.wixsite.com/memn>

Special Education Newsletter

<https://public.govdelivery.com/accounts/TXTEA/subscriber/new>

Thank You!

TEA Special Education Division: sped@tea.texas.gov
512-463-9414

Tea.texas.gov/texasSped