

60x30TX Progress

April 25, 2018



Texas Higher Education
Coordinating Board

Raymund A. Paredes, Ph.D.
Commissioner of Higher Education

The Four 60x30TX Goals

By 2030:



THE OVERARCHING GOAL: 60x30 EDUCATED POPULATION

At least 60 percent of Texans ages 25-34 will have a certificate or degree.

- *Supports the economic future of the state*



THE SECOND GOAL: COMPLETION

At least 550,000 students in 2030 will complete a certificate, associate, bachelor's, or master's from an institution of higher education in Texas.

- *Requires large increases among targeted groups*



THE THIRD GOAL: MARKETABLE SKILLS

All graduates from Texas public institutions of higher education will have completed programs with identified marketable skills.

- *Emphasizes the value of higher education in the workforce*



THE FOURTH GOAL: STUDENT DEBT

Undergraduate student loan debt will not exceed 60 percent of first-year wages for graduates of Texas public institutions.

- *Helps students graduate with manageable debt*



Texas young adults ages 25-34 are **27th** in the world



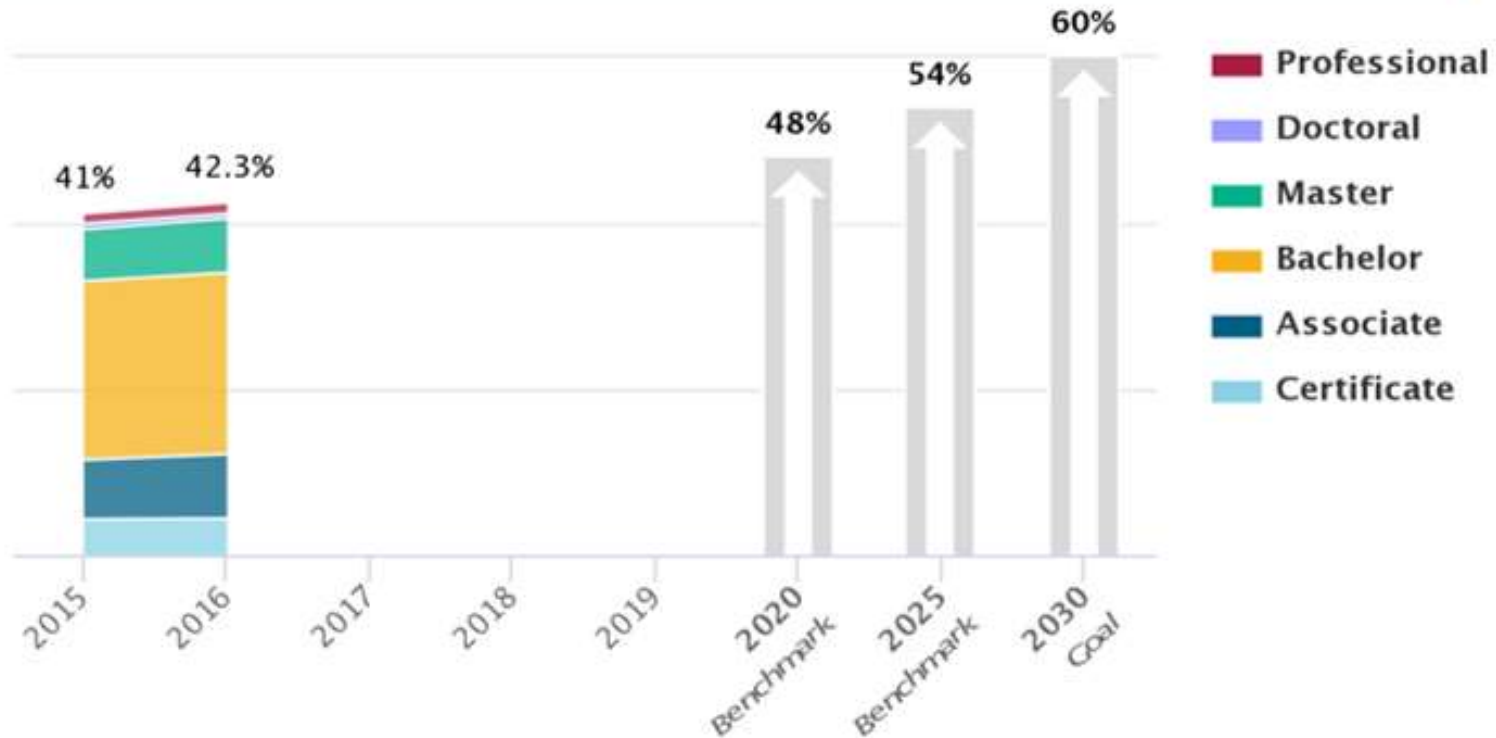
Texas attainment levels have stayed relatively steady,
but in a global economy, **staying steady = falling behind**



EDUCATED POPULATION

Goal: By 2030, at least 60% of Texans ages 25-34 will have a certificate or degree

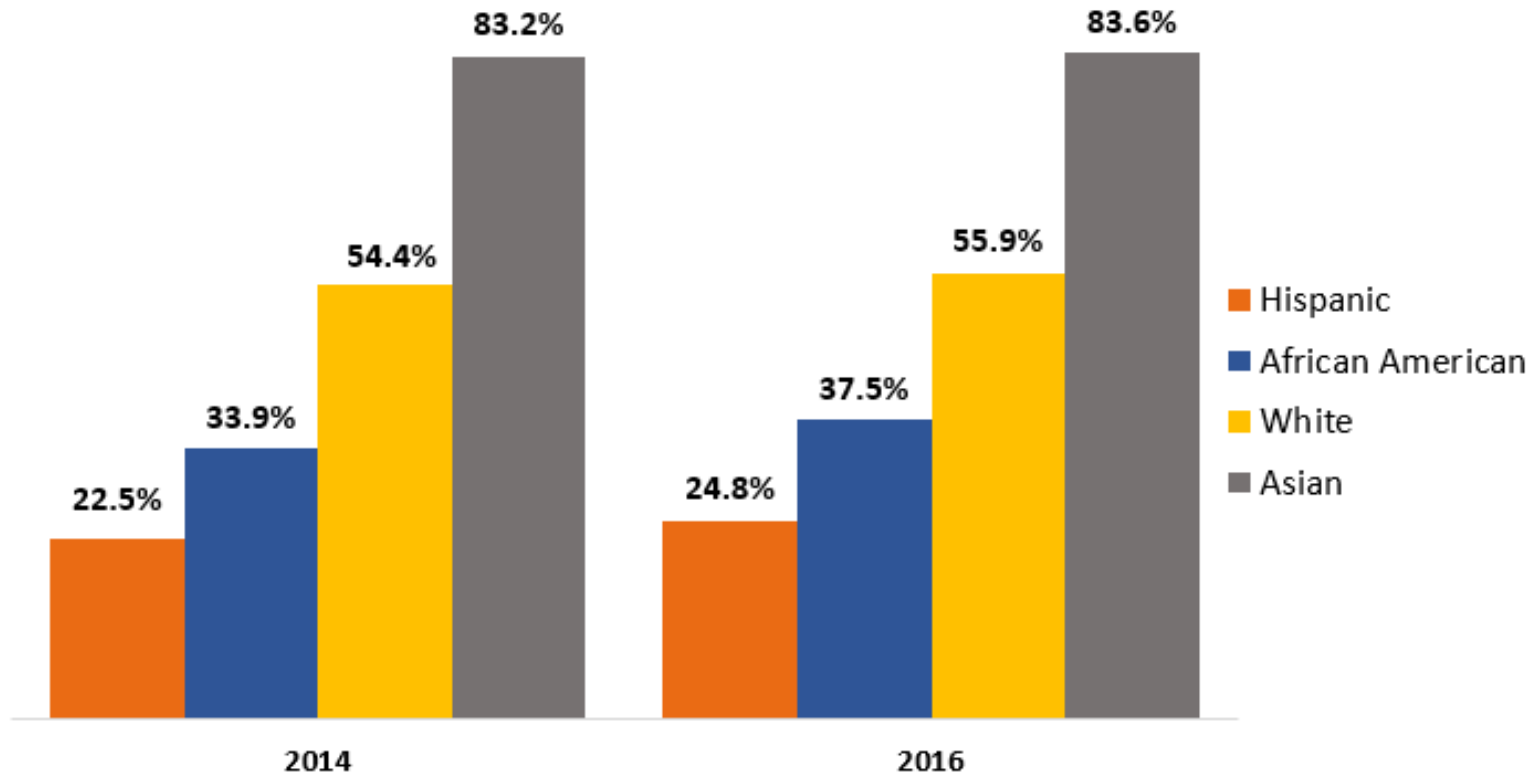
Percent of Texas Population Ages 25-34 with a Postsecondary Credential





There are substantial attainment gaps across major demographic groups

Percent of Population Ages 25-34 with a Certificate or Degree





COMPLETION

Goal: At least 550,000 students in 2030 will complete a certificate, associate, bachelor's, or master's from an institution of higher education in Texas

Number Completing a Certificate, Associate, Bachelor's or Master's in Texas

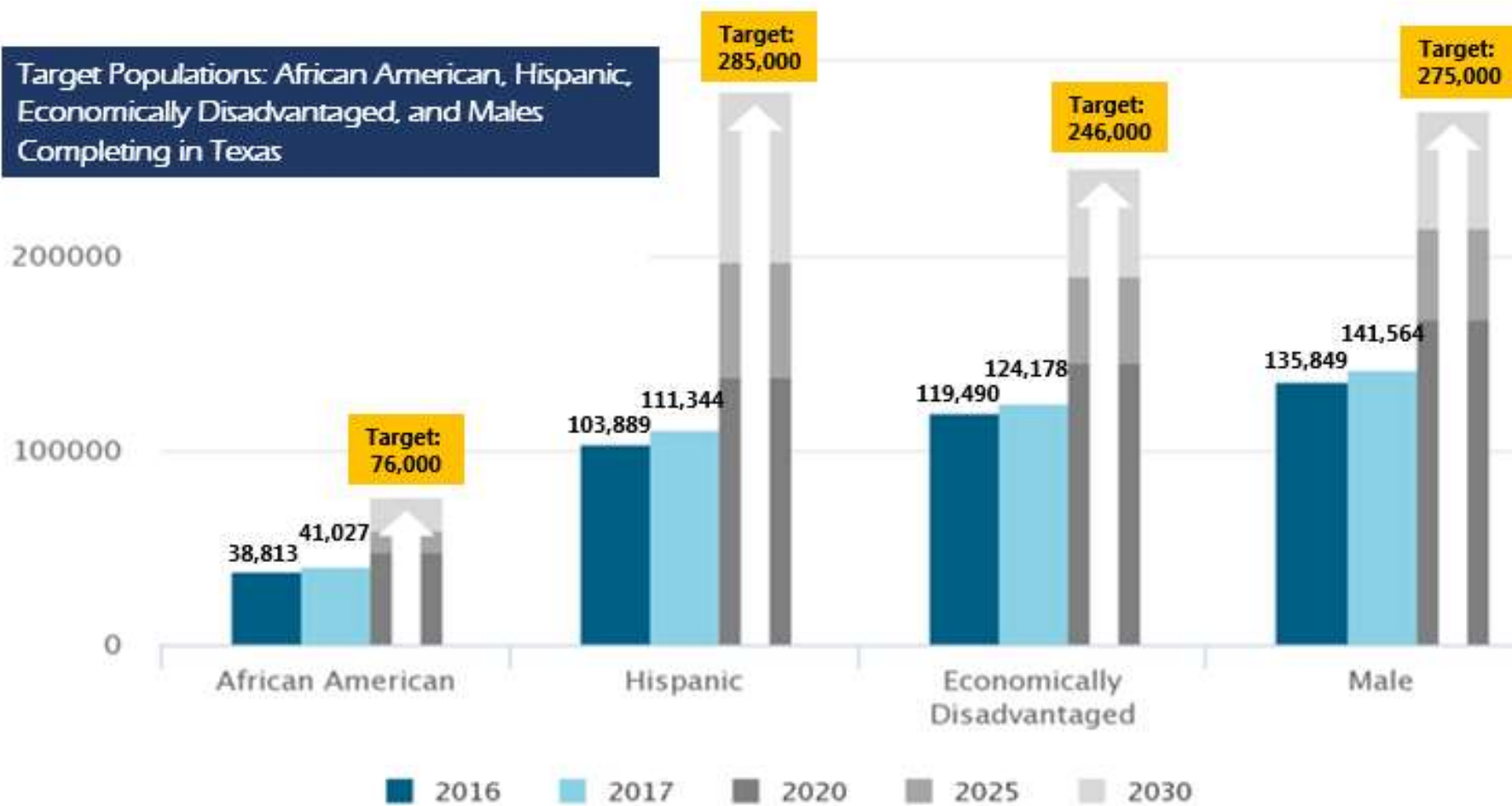
The number of students completing a certificate or degree increased 3.9% in the last year





Achieving targets for **specific student groups** is central to meeting the completion goal

Target Populations: African American, Hispanic, Economically Disadvantaged, and Males Completing in Texas





The *60x30TX* completion goal includes a **target of increasing the percentage of Texas public high school graduates** enrolling directly into Texas higher education

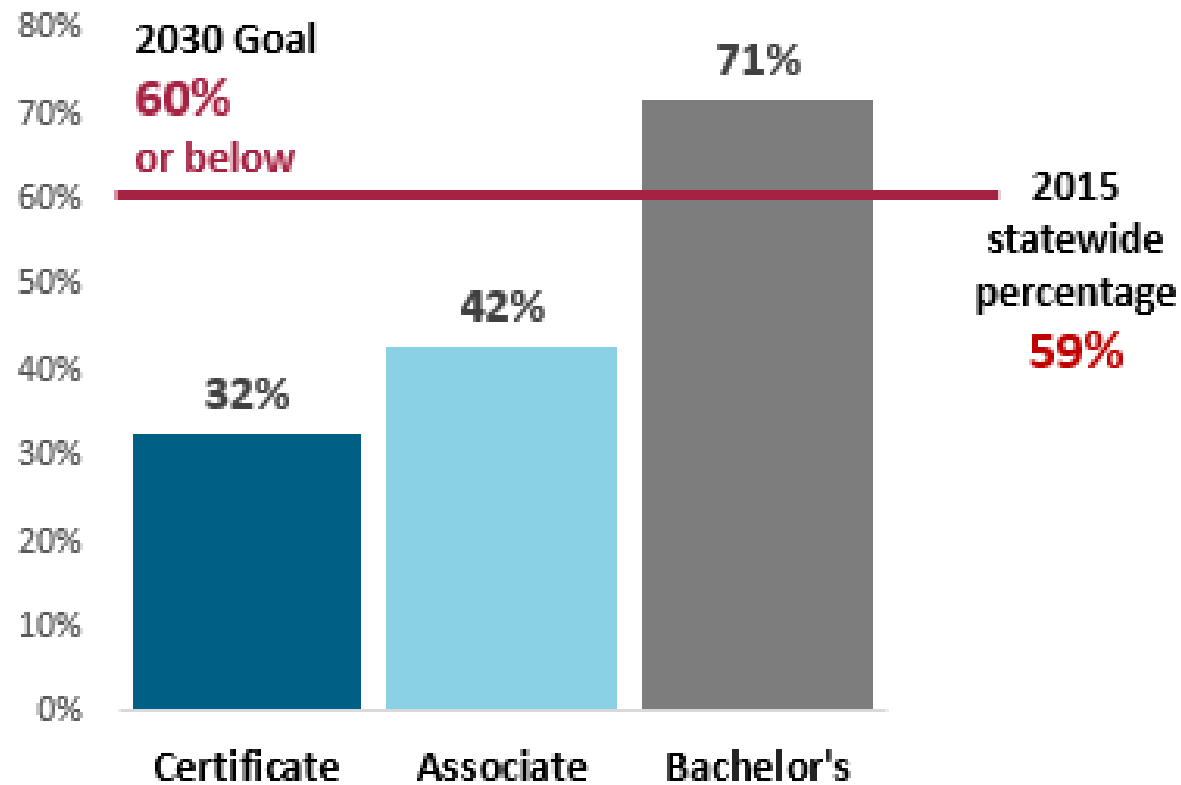
Percentage of high school students enrolling directly into higher education

Baseline Year	Recent Trend Years		Target
2014	2015	2016	2030
54%	53%	52%	65%



STUDENT DEBT

Goal: Undergraduate student loan debt will not exceed 60% of first-year wages for graduates of Texas public institutions





The debt goal has two targets to help **maintain undergraduate student loan debt** at or below 60% of first-year wages

Target: Limit debt to no more than half of all students who earn an undergraduate degree or certificate

Status: **47%** of undergraduates completed with debt in 2017

Target: Decrease the excess semester credit hours that students attempt in completing an associate or bachelor's degree

Status: **2 SCH** drop in **average SCH to Bachelor's degrees** at public universities

FY 2015 – 139 SCH FY 2017 – 137 SCH

Est. Annual Tuition & Fees Savings: **\$61.2M**

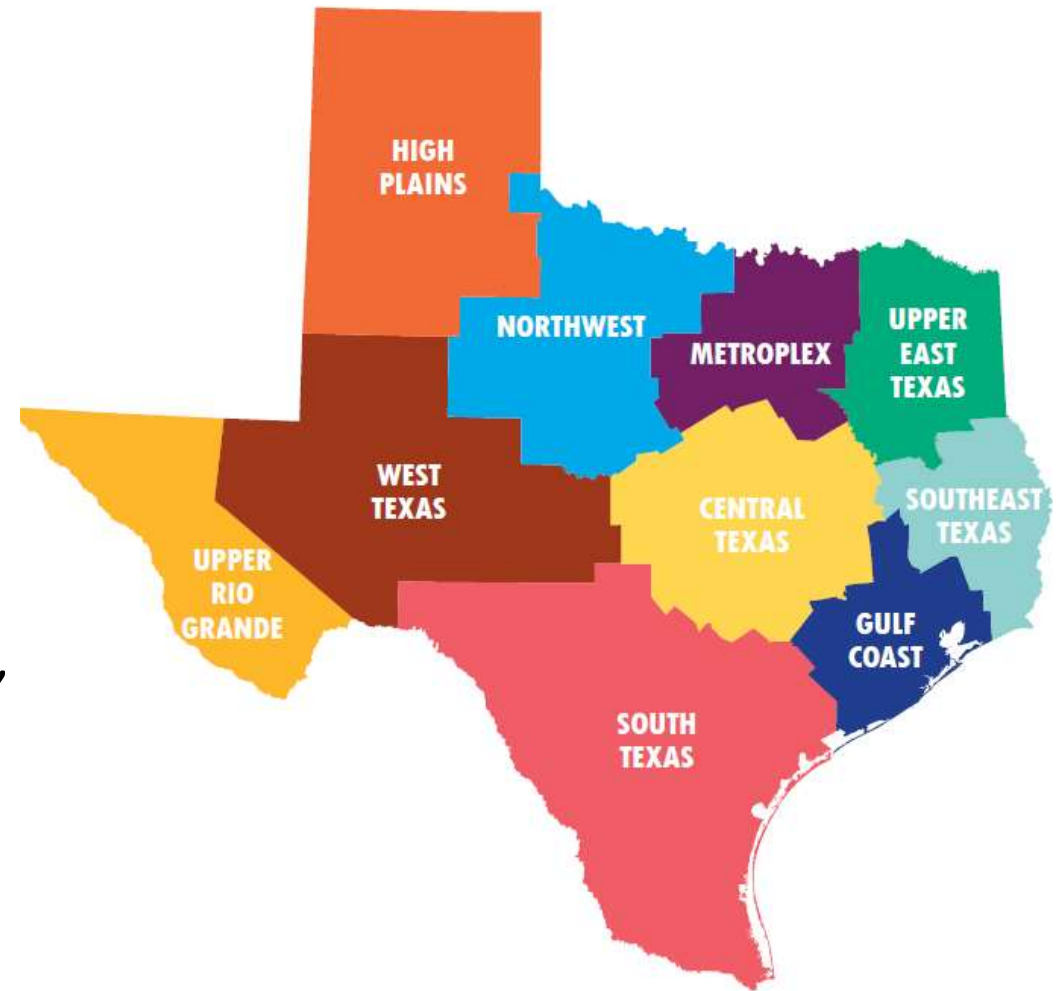
2 SCH drop in **average SCH to Associate degrees** at public two-year institutions

FY 2015 – 88 SCH FY 2017 – 86 SCH

Est. Annual Tuition & Fees Savings: **\$16.3M**

60x30TX regional targets promote **regional mobilization** and **strategy development**

- Regions and institutions differ in many ways. Institutional actions and outcomes are embedded in regional context.
- THECB has identified regional targets in three areas:
 - ✓ 60x30 Educated Population Goal
 - ✓ Completion Goal of 550,000 certificates, associate, bachelor's, and master's degrees
 - ✓ 65% High school-to-higher education direct enrollment
- Regions are convening locally to identify “best bet” strategies by August 2018



Promising Policies and Programs

- ✓ **Innovative Educational Initiatives**
 - Texas Affordable Baccalaureate
 - GradTX
 - Corequisite delivery of developmental education
- ✓ **Efforts to improve timely completion**
 - Funding on student outcomes
 - Texas Pathways Project
 - Block scheduling
- ✓ **Online education programs**
- ✓ **Professional development**

Texas is already seeing progress on 60x30TX metrics

Goal	Target	2016	2017	One-Year Improvement (pc = point change)	Annual % Increase Needed	2020 Benchmark	2030 Goal/Target
60x30	60x30 (Educated Population)	41.0%	42.3%	1.3% pc	1.3%	48%	60%
Completion	Overall	321,410	333,920	3.9%	3.9%	376,000	550,000
	Hispanic	103,889	111,344	7.2%	7.5%	138,000	285,000
	African American	38,813	41,027	5.7%	4.5%	48,000	76,000
	Male	135,849	141,564	4.2%	5.2%	168,000	275,000
	Economically Disadvantaged	119,490	124,178	3.9%	5.3%	146,000	246,000
	TX High School Graduates Enrolling in TX Higher Education	51.9%	Available May 2018		.7%	58%	65%
Marketable Skills	Working or Enrolled Within One Year	78.8%	78.4%	-0.40% pc	--	80%	80%
Student Debt	Student Loan Debt to First Year Wage Percentage	60%	59%	-1% pc	--	60%	60%
	Excess SCH Attempted*	19	18	-1 SCH	--	12	3
	Percent of Undergraduates Completing with Debt	48.2%	47.2%	-1% pc	--	50%	50%