

STUDENTS BY DEMOGRAPHIC GROUP

	Number of Students*	% of Total	% Change from 2015
African American	666,933	12.6%	1.19%
American Indian	20,855	0.4%	-2.60%
Asian	212,973	4.0%	5.57%
Hispanic	2,760,302	52.2%	1.70%
Pacific Islander	7,392	0.1%	4.33%
White	1,507,225	28.5%	-0.15%
Two or More Races	108,572	2.1%	6.28%
Total	5,284,252	99.9%	1.32%
Economically Disadvantaged	3,118,758	59.0%	1.63%
Limited English Proficient	979,868	18.5%	3.32%

STUDENTS BY GRADE

	Number of Students*	% of Total	% Change from 2015
Kindergarten & Earlier	609,904	11.50%	-1.90%
Elementary School (1-5)	2,020,840	38.30%	1.32%
Middle School (6-8)	1,166,245	22.10%	1.02%
High School (9-12)	1,487,263	28.20%	2.96%
Total	5,284,252	100.10%	1.32%

STUDENTS BY PROGRAM

	Number of Students*	% of Total	% Change from 2015
Bilingual/ESL	968,569	18.3%	4.06%
Career & Technology	1,284,748	24.3%	6.20%
Gifted & Talented	404,540	7.7%	1.86%
Special Education	453,955	8.6%	2.59%

*Number of Students from Fall 2015 Snapshot

2014-15 ATTENDANCE RATE

All	African American	American Indian	Asian	Hispanic
95.7%	95.5%	95.3%	97.7%	95.6%
	Pacific Islander	White	Two or More Races	Econ. Disadv.
	95.6%	95.8	95.8%	95.4%

COMPLETION GRADES 9-12 (CLASS OF 2015)

	Graduated	Rec'd GED	Cont'd H.S.	Dropped Out (4-yr.)
African American	85.2%	0.5%	4.8%	9.5%
American Indian	86.3%	0.7%	4.2%	8.7%
Asian	95.4%	0.2%	2.2%	2.2%
Hispanic	86.5%	0.5%	5.3%	7.7%
Pacific Islander	88.7%	0.9%	3.9%	6.5%
White	93.4%	0.8%	2.4%	3.4%
Two or More Races	92.1%	0.6%	3.0%	4.3%
State	89.0%	0.6%	4.1%	6.3%
Econ. Disadv.	85.6%	0.7%	5.0%	8.7%

2014-15 DROPOUTS BY ETHNICITY

	Annual		Annual	
	Grade 7-8	Dropout Rate	Grade 9-12	Dropout Rate
African American	537	0.5%	5,828	3.0%
American Indian	N/A	0.4%	N/A	2.8%
Asian	54	0.2%	457	0.8%
Hispanic	1,473	0.4%	18,724	2.5%
Pacific Islander	N/A	0.4%	N/A	2.1%
White	468	0.2%	5,228	1.1%
Two or More Races	35	0.2%	397	1.5%
State	2,584	0.3%	30,853	2.1%
Econ. Disadv.	1,838	0.4%	20,177	2.5%

ACCOUNTABILITY INDICATOR
PHASE-IN 1 LEVEL II OR ABOVE

	Includes grades 3-12					
	All Tests	Reading	Math	Writing	Science	Social Studies
ALL	75%	73%	76%	69%	79%	77%
African American	64%	63%	64%	60%	68%	70%
American Indian	74%	72%	75%	67%	79%	79%
Asian	92%	91%	94%	90%	94%	92%
Hispanic	70%	68%	73%	64%	75%	73%
Pacific Islander	78%	75%	79%	74%	81%	81%
White	85%	84%	85%	80%	88%	86%
Two or More Races	82%	82%	82%	77%	85%	84%
Econ. Disadv.	67%	65%	70%	60%	72%	69%

END-OF-COURSE EXAMS
PHASE-IN 1 LEVEL II OR ABOVE

	Includes grades 8-12				
	English I	English II	Algebra I	Biology	U.S. History
ALL	65%	67%	78%	87%	91%
African American	56%	57%	67%	81%	86%
American Indian	64%	66%	75%	86%	91%
Asian	87%	85%	95%	96%	96%
Hispanic	60%	61%	75%	85%	89%
Pacific Islander	68%	67%	78%	87%	93%
White	78%	81%	86%	94%	95%
Two or More Races	75%	79%	83%	92%	94%
Econ. Disadv.	57%	58%	72%	83%	87%

DISTRICT RATINGS (INCLUDING CHARTERS)

	Districts	% of Total
Met Standard/Alternative	1,137	94.2%
Met Standard	1,107	91.7%
Met Alternative Standard	30	2.5%
Improvement Required	57	4.7%
Not Rated	12	1.0%
Data Integrity Issue	1	0.1%
Total Districts	1,207	100.0%

CAMPUS RATINGS (INCLUDING CHARTERS)

	Campuses	% of Total
Met Standard/Alternative	7,684	88.6%
Met Standard	7,435	85.7%
Met Alternative Standard	249	2.9%
Improvement Required	445	5.1%
Not Rated	542	6.2%
Data Integrity Issue	2	0.0%
Total Campuses	8,673	100.0%

2015-16 SCHOOL FIRST RATINGS

Based on School Year 2014-2015 Data

	Districts		Charters	
	Count	% of Total	Count	% of Total
Pass	1,019	99.61%	172	98.85%
Substandard Achievement	4	0.39%	2	1.15%
Total	1,023	100.00%	174	100.00%

Charters revoked in 2015-2016 did not receive Charter FIRST ratings.

GRADUATES

Class of 2015

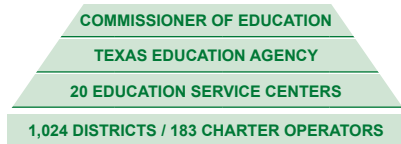
	Graduates (incl. Sp. Ed.)	All Graduates %
African American	39,692	12.7%
American Indian	1,335	0.4%
Asian	13,090	4.2%
Hispanic	148,966	47.5%
Pacific Islander	486	0.2%
White	104,377	33.3%
Two or More Races	5,451	1.7%
Total	313,397	100%
Distinguished Achievement	43,393	13.8%
Recommended H.S.	208,131	66.4%
Minimum	46,723	14.9%
Foundation H.S. (No Endorsement)	8,982	2.9%
Foundation H.S. (Endorsement)	523	0.2%
Foundation H.S. (DLA*)	5,645	1.8%
Total	313,397	100.0%
Total Special Education	23,541	7.5%

*Distinguished Level of Achievement

COLLEGE ADMISSIONS TESTING

Class of 2015

	% Tested	SAT Avg	ACT Avg
African American	71.9%	1234	17.4
American Indian	64.8%	1413	21
Asian	92.7%	1641	25.1
Hispanic	63.7%	1286	18.4
Pacific Islander	70.6%	1406	21
White	70.1%	1548	23.1
Two or More Races	71.0%	1509	22.3
State	68.3%	1394	20.6

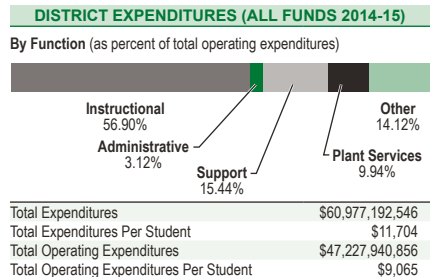
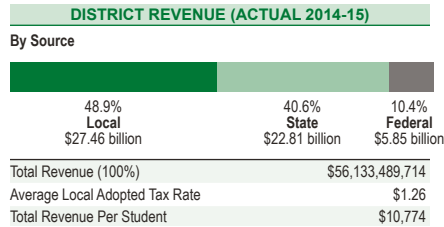


Size	Enrollment (Spring 2016)	Number of Districts/Charters	% of All Students
50,000 & Over	1,603,572	20	30.35%
25,000-49,999	1,029,872	28	19.49%
10,000-24,999	1,013,335	63	19.18%
5,000-9,999	538,934	77	10.20%
3,000-4,999	342,163	89	6.48%
1,600-2,999	297,194	139	5.62%
1,000-1,599	179,658	143	3.40%
500-999	171,392	240	3.24%
Under 500	108,186	408	2.05%
Total	5,284,306	1,207	100.00%

Campus Type	Enrollment (Spring 2016)	Number of Campuses	% of All Students
High School	1,425,588	1,511	26.98%
Junior High School	182,534	270	3.45%
Middle School	924,282	1,382	17.49%
Elementary School	2,561,382	4,635	48.47%
Elementary & Secondary	190,520	885	3.61%
Other Grade Group	0	2	0.00%
Total	5,284,306	8,685	100.00%

DISTRICT STAFF BY CATEGORY		
	Full-Time Equivalents	Avg. Base Salary
Teachers	347,272	\$51,891
Campus Administration	20,171	\$75,654
Central Administrators	7,340	\$99,111
Professional Support	67,755	\$61,145
Total Professionals	442,538	
Educational Aides	65,702	\$20,118
Auxiliary Staff	179,801	\$24,808
Total Staff	688,142	

TEACHER PROFILES		
	Full-Time Equivalents	% of Total
Gender	Female	265,515 76.5%
	Male	81,757 23.5%
Ethnicity	African American	34,950 10.1%
	American Indian	1,243 0.4%
	Asian	5,134 1.5%
	Hispanic	90,215 26.0%
	Pacific Islander	819 0.2%
	White	211,190 60.8%
Experience	Two or More Races	3,721 1.1%
	First Year	27,995 8.1%
	1-5 years	94,787 27.3%
	6-10 years	75,285 21.7%
	11-20 years	94,650 27.3%
20+ years	54,555 15.7%	



STATE BOARD OF EDUCATION Members		
Georgina C. Pérez District 1 El Paso	Donna Bahorich District 6 Houston	Patricia Hardy District 11 Fort Worth
Ruben Cortéz, Jr. District 2 Brownsville	David Bradley District 7 Beaumont	Geraldine Miller District 12 Dallas
Marisa Pérez District 3 San Antonio	Barbara Cargill District 8 The Woodlands	Erika Beltrán District 13 Fort Worth
Lawrence A. Allen, Jr. District 4 Houston	Keven Ellis District 9 Lufkin	Sue Melton-Malone District 14 Robinson
Ken Mercer District 5 San Antonio	Tom Maynard District 10 Florence	Marty Rowley District 15 Amarillo

Information contained in this pamphlet was compiled from data provided by the PEIMS collection, the TAPR report, and School FIRST. For more information, contact:
 Texas Education Agency
 Division of Communications: (512) 463-9000
www.tea.texas.gov/communications/pocket-edition/

For additional copies of this brochure, visit:
 TEA Office of Publications
www.tea.texas.gov/publications/info/
 BR17 130 02
 January 2017

POCKET EDITION

2015-16 Texas Public School Statistics

Texas Education Agency
 Mike Morath
 Commissioner of Education

The Texas public school system consists of:

- 1,207 school districts and charters
- 8,685 campuses
- 347,272 teachers
- 5.28 million students

The Texas student makeup is:

- 52.2% Hispanic
- 28.5% White
- 12.6% African American
- 4.0% Asian
- 59.0% Economically Disadvantaged
- 18.5% Limited English Proficient
- 2.1% Two/More Races
- 0.4% American Indian
- 0.1% Pacific Islander

